

Technical data sheet

Type BA BM

Backflow preventer

Type BA

Applications and special features



- Easy maintenance thanks to modular sub-sets.
- Piston technology on the relief valve, without membrane : easy mounting/dismantling, reinforced longevity.
- Easy access.
- Compact design and space-saving.
- Reduced head losses.
- High quality materials.
- Connection : Male threaded union nuts (BSP) ISO 228-1

Technical description

"	DN		Ref	Acoustic group
	"	mm		
1/2	15		149B70000	I
3/4	20		149B70001	I
1	25		149B70002	I
1 1/4	32		149B70003	I
1 1/2	40		149B70004	-
2	50		149B70005	-

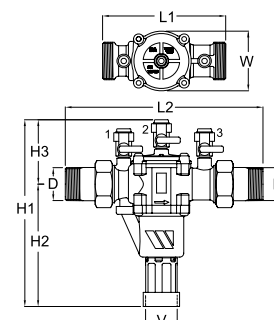
- **Connection** : Male threaded union nuts (BSP)
- **Permissible operating pressure PFA - water**- 10 bar
- **θ** Maxi 65° C
- **Mediums** : Clear water
- **Approvals** :
- **Other approvals available** : : Consult us.

International construction Standards :

EN 1717 - EN12729 P-IX870/1
Thread connection according to EN ISO 228-1

Overall dimensions

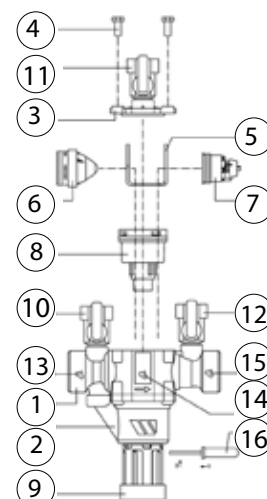
DN	D	V	L1	L2	H1	H2	H3	W	Weight
"	mm	mm	mm	mm	mm	mm	mm	mm	kg
1/2*	15	32	122	201	168.5	103	65.5	53	1.2
3/4	20	32	122	201	168.5	103	65.5	53	1.2
1	25	40	157	252	238	156	82	76	2.7
1 1/4	32	40	157	252	238	156	82	76	2.7
1 1/2	40	50	220	336	303.5	202.5	101	115	6.5
2	50	50	220	336	303.5	202.5	101	115	6.5



Technical data sheet Type BA BM - Backflow preventer

Spare parts list and materials

Nr	Description	Materials
1	BODY	DZR brass
2	RELIEF VALVE BODY	PA
3	COVER	DZR brass
4	SCREWS	Zinc coated steel
5	BEARING	Stainless steel
6	UPSTREAM VALVE	POM
7	DOWNSTREAM VALVE	POM
8	RELIEF VALVE MODULE	Stainless steel-POM-brass
9	FUNNEL	PVC
10	TEST COCK 1	Brass
11	TEST COCK 2	Brass
12	TEST COCK 3	Brass
13	INLET ZONE	
14	INTERMEDIATE ZONE	
15	OUTLET ZONE	

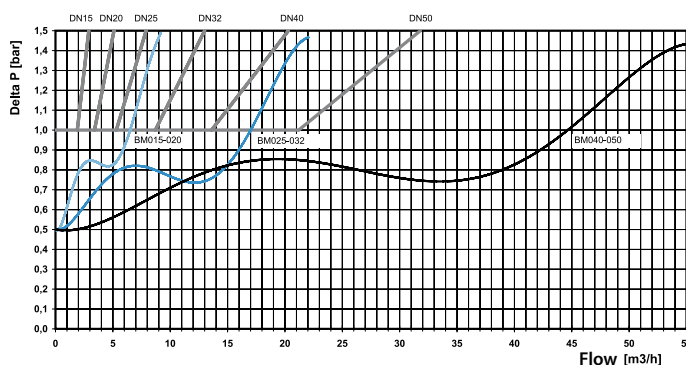


Installation and maintenance

- In accordance with antipollution standard and hygiene regulations, the user undergoes the following requirements :
 - declaration of intention of installation, 2 months before doing the work.
 - declaration of putting into service.
 - annual performance check (maintenance), including the accessories which are part of the protection device ; the results are communicated to the health/water authorities.
- In the case of an upstream diversion in the area right in front of the RPZ, it is necessary to install a check valve between the diversion and the RPZ.
- Always manipulate the upstream valve slowly
- Directions for installation :**
 - Total accessibility
 - non-submersible installation
 - purge carefully all air from the installation (non polluted atmosphere),
 - the discharge valve must be able to cope with the discharge flow rate.
 - protection against frost or extreme temperatures

Installation specification : the correct installation requires :
 - upstream : stop valve + filter (with drain cock)
 - downstream : stop valve
(See technical manual supplied with the RPZ)
 Protection at the connection point to the public potable water system

Working principle



Socla can accept no responsibility for possible errors in catalogue, brochures and other printed material. Socla reserve the right to alter its products without notice. This also applies to products already agreed. All trademarks in this material are the property of the respective companies. All right reserved.

Socla SAS

365 rue du lieutenant Putier
 71530 VIREY LE GRAND
 Postal address : CS 10273
 71107 CHALON SUR SAONE Cedex

Tel : 33 3 85 97 42 52
 Fax : 33 3 85 97 42
<http://www.socla.com>
 e-mail: commer@socla.com