



Series W-JZG44-16Q (DN50-DN600)

Water Pump Diffuser

4

Water Pump Diffuser

◆ Application:

The Watts W-JZG44 Water Pump Diffuser is designed to have elbow strainers and rectifier function at the same time. It's generally used in chemical industry, metallurgy, water treatment, etc.



◆ Features:

1. Drastically reduce the installation space;
2. Big filter area, small water resistance;
3. Special current plate structure, which can eliminate the turbulent flow and reduce cavitation;
4. Filter screen is removable for cleaning;
5. Eliminate noise, stabilize water flow and prolong the service life of the pump.

◆ Working Principles:

Water Pump Diffuser is pump diffuser. After medium enters, the inside filter screen can filter out impurities, according to the direction transformation of elbow, current plate can eliminate the turbulent flow and reduce the cavitation.

◆ Technical Specification:

Nominal Diameter:	DN50~DN600
Nominal Pressure:	PN16
Working Temperature:	-20℃~120℃
Fluid Medium:	Water
Connection Standard:	BS EN1092-2-1997
Test Standard:	BS EN12266-2:2002

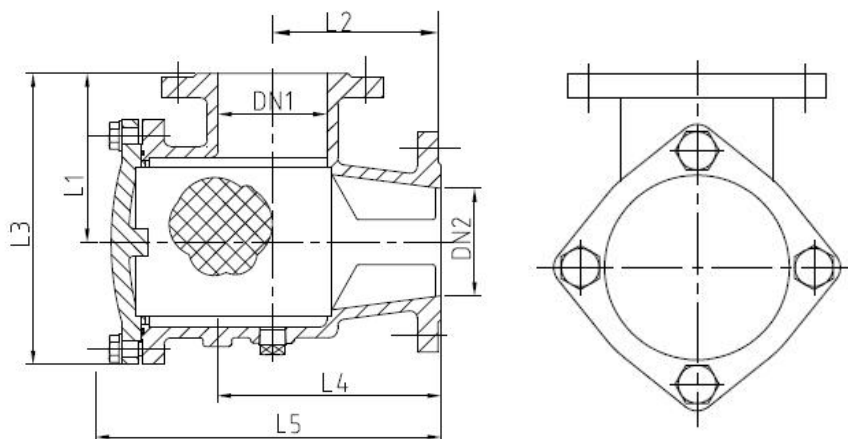
◆ Component Material:

Part	Body	Bonnet	Punching Hole Meshes	Rayon Mesh
Material	Ductile iron 450 coated with Epoxy	Ductile iron 450 coated with Epoxy	Stainless Steel 304 (Bore diameter:Ø3.2mm)	Stainless Steel 304 (The number of mesh:20)

◆ Installation Dimensions:

Watts product specifications in metric units are provided for reference only. For precise measurements please contact Watts Technical Service. Watts reserves the right to change or modify product design, construction, specifications, or materials without prior notice and without incurring any obligation to make such changes and modifications on Watts products previously or subsequently sold.





DN1 X DN2 DN(mm)	尺寸(mm)				
	L1	L2	L3	L4	L5
50X50	105	120	168	155	205
65X65	115	125	195	165	220
80X80	130	135	220	185	250
100X80	130	135	220	185	250
100X100	145	185	250	230	330
125X100	145	185	250	230	330
125X125	180	230	300	300	400
150X100	145	185	250	230	330
150X125	180	230	300	300	400
150X150	209	220	349	275	380
200X125	205	220	345	275	380
200X150	205	220	345	275	380
200X200	240	280	410	370	501

DN1 X DN2 DN(mm)	尺寸(mm)				
	L1	L2	L3	L4	L5
250X200	240	280	410	370	495
250X250	280	325	470	425	615
300X200	280	325	470	425	625
300X250	280	325	470	425	615
300X300	305	380	545	485	682
350X250	305	380	545	485	692
350X300	308	380	548	485	682
350X350	356	420	636	550	785
400X300	320	380	580	480	695
400X350	356	420	636	550	785
400X400	400	450	720	550	830
450X450	430	540	780	680	983
500X500	500	650	900	750	1068
600X600	580	820	1020	900	1357

Watts product specifications in metric units are provided for reference only. For precise measurements please contact Watts Technical Service. Watts reserves the right to change or modify product design, construction, specifications, or materials without prior notice and without incurring any obligation to make such changes and modifications on Watts products previously or subsequently sold.

◆ Typical Application:

1. Water plant and water source project;
2. Environmental protection;
3. Municipal facilities;
4. Electric power and utilities;
5. Construction industry;
6. Steel & Metallurgy;
7. Papermaking industry.

◆ Installation Instructions:

1. The valve's rated parameters should match the equipment's. Make sure that the valve's rated flow satisfies the actual demand;
2. The installer must be trained or experienced so as to operate the installation correctly;
3. A thorough check after installation is needed to ensure no errors;
4. A thorough cleaning before installation is needed (chemical reagent can be applied if it is necessary) to ensure that there is not any rusting or dirt in the pipe. All the filters must be removed before washing to keep the pipe smoothly open;
5. When beginning to wash the system, it is suggested to install the valve on a temporary pipe. After finishing system cleaning, move the valve back and install it on the system's pipe;
6. Use flange and the corresponding bolts that meet the standard to connect the valve;
7. When installation, the direction of flow must accord with the direction of the arrow head on the valve body.