



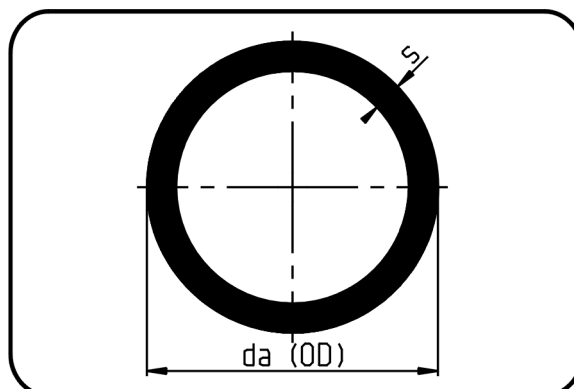
PP-S Industrial Piping Systems

(Polypropylen-homopolymere, flame-retardant). Due to the higher stiffness of PP-s, it is well suited for intake and exhaust ventilation systems and degassing pipes as well as for flue lining systems. It may not be used for outdoors applications due to the missing UV stabilization. Pipe standards to DIN 8077/8078 and fittings to DIN 24146

■ Pipe 5m

■ extruded

■ PPs grey

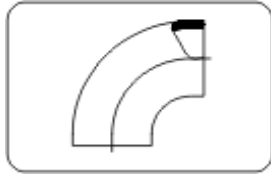


Code 705

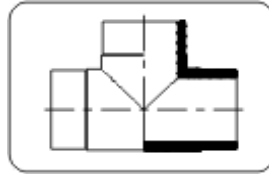
Dimension	Code	Detail	da(OD) mm	s mm	Weight/ Gewicht
140	17.705.0140.00	140X3,0 Ventilation	140	3	1,32
160	17.705.0160.00	160X3,0 Ventilation	160	3	1,53
180	17.705.0180.00	180X3,0 Ventilation	180	3	1,71
200	17.705.0200.00	200X3,0 Ventilation	200	3	1,90
225	17.705.0225.00	225X3,5 Ventilation	225	3,5	2,47
250	17.705.0250.00	250X3,5 Ventilation	250	3,5	2,75
280	17.705.0280.00	280X4,0 Ventilation	280	4	3,48
315	17.705.0315.00	315X5,0 Ventilation	315	5	4,91
355	17.705.0355.00	355X5,0 Ventilation	355	6	5,54
400	17.705.0400.00	400X6,0 Ventilation	400	6	7,39
450	17.705.0450.00	450X6,0 Ventilation	450	6	8,33
500	17.705.0500.00	500X8,0 Ventilation	500	8	12,30
560	17.705.0560.00	560X8,0 Ventilation	560	8	13,80
630	17.705.0630.00	630X10,0 Ventilation	630	10	19,30
710	17.705.0710.00	710X12,0 Ventilation	710	12	26,00
800	17.705.0800.00	800X12,0 Ventilation	800	12	29,30
900	17.705.0900.00	900X15,0 Ventilation	900	15	41,20
1000	17.705.1000.00	1000X15,0 Ventilation	1.000	15	45,90
1200	17.705.1200.00	1200X18,0 Ventilation	1.200	18	65,80
75	17.705.0075.41	75X1,9 SDR41 ISO S-20	75	1,9	0,45

Dimension	Code	Detail	da(OD) mm	s mm	Weight/ Gewicht
90	17.705.0090.41	90X2,2 SDR41 ISO S-20	90	2,2	0,62
110	17.705.0110.41	110X2,7 SDR41 ISO S-20	110	2,7	0,92
125	17.705.0125.41	125X3,1 SDR41 ISO S-20	125	3,1	1,20
63	17.705.0063.33	63X2,0 SDR33 ISO S-16	63	2	0,39
20	17.705.0020.11	20X1,9 SDR11 ISO S-5			0,12
25	17.705.0025.11	25X2,3 SDR11 ISO S-5	25	2,3	0,17
32	17.705.0032.11	32X2,9 SDR11 ISO S-5	32	3	0,27
40	17.705.0040.11	40X3,7 SDR11 ISO S-5	40	3,7	0,42
50	17.705.0050.11	50X4,6 SDR11 ISO S-5	50	4,6	0,65
63	17.705.0063.11	63X5,8 SDR11 ISO S-5	63	5,8	1,03
75	17.705.0075.11	75X6,8 SDR11 ISO S-5	75	6,8	1,44
90	17.705.0090.11	90X8,2 SDR11 ISO S-5	90	8,2	2,08
110	17.705.0110.11	110X10,0 SDR11 ISO S-5	110	10	3,09
140	17.705.0140.11	140X12,7 SDR11 ISO S-5	140	12,7	4,99
160	17.705.0160.11	160X14,6 SDR11 ISO S-5	160	14,6	6,55

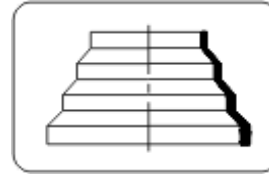
■ **Fittings with short spigot**



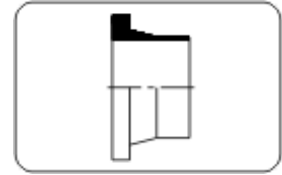
Code 001



Code 006



Code 007



Code 012

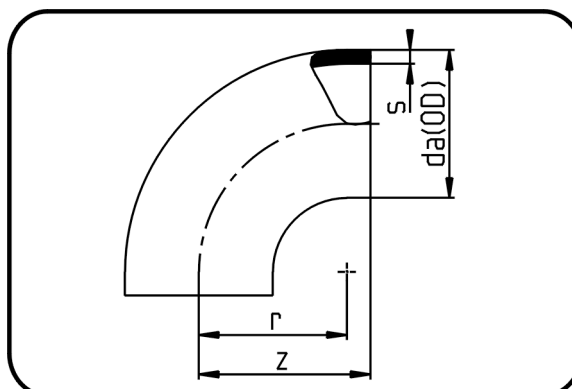
Bend 90°

short spigot

injection moulded

Butt-welding

PPs grey



Code 001

Dimension	Code	Detail	da(OD) mm	s mm	z mm	r mm	Weight/ Gewicht
110	17.001.0110.33	110X3,4 SDR33 ISO S-16	110	3,4	120	110	0,25
160	17.001.0160.33	160X4,9 SDR33 ISO S-16	160	4,9	180	155	0,76
180	17.001.0180.33	180X5,5 SDR33 ISO S-16	180	5,5	200	180	1,00
200	17.001.0200.33	200X6,2 SDR33 ISO S-16	200	6,2	220	200	1,42
225	17.001.0225.33	225X6,9 SDR33 ISO S-16	225	6,9	250	225	1,92
250	17.001.0250.33	250X7,7 SDR33 ISO S-16	250	7,7	290	265	2,94
280	17.001.0280.33	280X8,6 SDR33 ISO S-16	280	8,6	290	260	3,65
315	17.001.0315.33	315X9,7 SDR33 ISO S-16	315	9,7	340	300	5,20
355	17.001.0355.33	355X10,9 SDR33 ISO S-16	355	10,9	340	300	6,68
400	17.001.0400.33	400X12,3 SDR33 ISO S-16	400	12,3	345	300	8,28
20	17.001.0020.11	20X1,9 SDR11 ISO S-5	20	1,9	32	23	0,01
32	17.001.0032.11	32X2,9 SDR11 ISO S-5	32	2,9	43	32	0,03
40	17.001.0040.11	40X3,7 SDR11 ISO S-5	40	3,7	46	40	0,03
50	17.001.0050.11	50X4,6 SDR11 ISO S-5	50	4,6	58	50	0,07
63	17.001.0063.11	63X5,8 SDR11 ISO S-5	63	5,8	70	63	0,12
75	17.001.0075.11	75X6,8 SDR11 ISO S-5	75	6,6	85	75	0,19
90	17.001.0090.11	90X8,2 SDR11 ISO S-5	90	8,2	100	90	0,34
110	17.001.0110.11	110X10,0 SDR11 ISO S-5	110	10	124	110	0,58
140	17.001.0140.11	140X12,7 SDR11 ISO S-5	140	12,7	150	140	1,22
160	17.001.0160.11	160X14,6 SDR11 ISO S-5	160	14,6	180	155	1,92

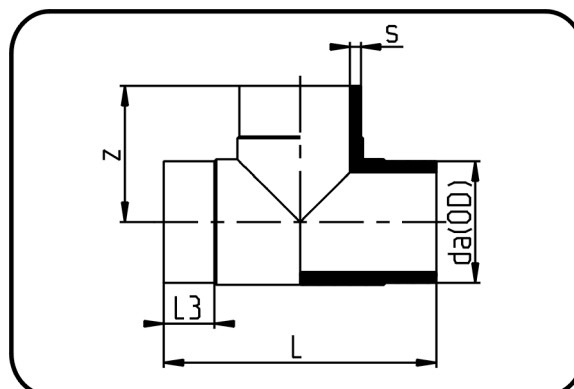
Tee

short spigot

injection moulded

Butt-welding

PPs grey



Code 006

Dimension	Code	Detail	da(OD) mm	s mm	z mm	L mm	L3 mm	Weight/ Gewicht
110	17.006.0110.33	110X3,4 SDR33 ISO S-16	110	3,4	109	223	33	0,44
160	17.006.0160.33	160X4,9 SDR33 ISO S-16	160	4,9	173	346	57	1,74
180	17.006.0180.33	180X5,5 SDR33 ISO S-16	180	5,5	186	372	57	1,41
200	17.006.0200.33	200X6,2 SDR33 ISO S-16	200	6,2	205	410	57	3,24
225	17.006.0225.33	225X6,9 SDR33 ISO S-16	225	6,9	222	448	57	4,42
250	17.006.0250.33	250X7,7 SDR33 ISO S-16	250	7,7	237	475	70	3,83
280	17.006.0280.33	280X8,6 SDR33 ISO S-16	280	8,6	270	540	80	5,73
315	17.006.0315.33	315X9,7 SDR33 ISO S-16	315	9,7	277	558	80	8,55
20	17.006.0020.11	20X1,9 SDR11 ISO S-5	20	1,9	34	68	17,5	0,02
25	17.006.0025.11	25X2,3 SDR11 ISO S-5	25	2,3	40	80	20,5	0,03
32	17.006.0032.11	32X2,9 SDR11 ISO S-5	32	2,9	45	90	20,5	0,04
40	17.006.0040.11	40X3,7 SDR11 ISO S-5	40	3,7	50	100	20,5	0,07
50	17.006.0050.11	50X4,6 SDR11 ISO S-5	50	4,6	60	120	23	0,11
63	17.006.0063.11	63X5,8 SDR11 ISO S-5	63	5,8	72	144	25	0,22
75	17.006.0075.11	75X6,8 SDR11 ISO S-5	75	6,8	75	152	15	0,39
90	17.006.0090.11	90X8,2 SDR11 ISO S-5	90	8,2	105	213	38	0,70
110	17.006.0110.11	110X10,0 SDR11 ISO S-5	110	10	122	253	51	1,18
140	17.006.0140.11	140X12,7 SDR11 ISO S-5	140	12,7	152	305	53	2,36
160	17.006.0160.11	160X14,6 SDR11 ISO S-5	160	14,6	173	346	57	2,91

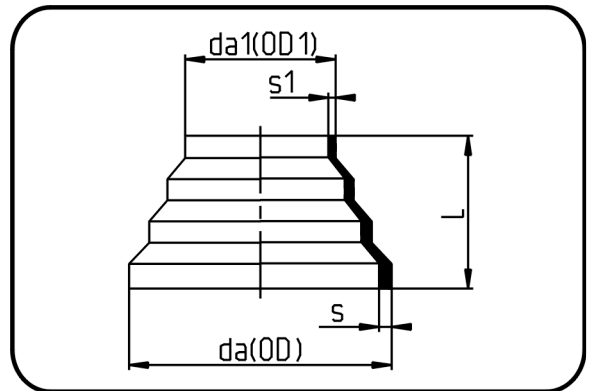
Reducer concentric

short spigot

injection moulded

Butt-welding

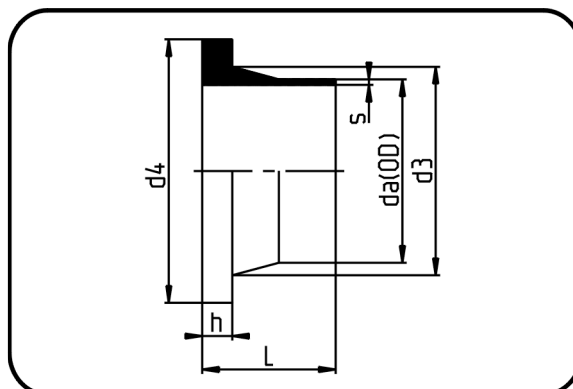
PPs grey



Code 007

Dimension	Code	Detail	da(OD) mm	da1(OD1) mm	s mm	L mm	s1 mm	Weight/ Gewicht
110/63	17.007.1163.33	110/63 SDR33 ISO S-16	110	63	3,4	62	3	0,07
125/75	17.007.1275.33	125/75 SDR33 ISO S-16	125	75	3,9	72	2,3	0,09
160/110	17.007.1611.33	160/110 SDR33 ISO S-16	160	110	4,9	83	3,4	0,16
225/160	17.007.2216.33	225/160 SDR33 ISO S-16	225	160	6,9	90	4,9	0,39
315/225	17.007.3122.33	315/225 SDR33 ISO S-16	315	225	9,7	130	6,9	1,04
63/16	17.007.6316.11	63/16 SDR11 ISO S-5	63	16	5,8	97	1,8	0,04
75/32	17.007.7532.11	75/32 SDR11 ISO S-5	75	32	6,8	71	2,9	0,06
110/63	17.007.1163.11	110/63 SDR11 ISO S-5	110	63	10	62	5,8	0,14
125/75	17.007.1275.11	125/75 SDR11 ISO S-5	125	75	11,4	72	6,8	0,20
160/110	17.007.1611.11	160/110 SDR11 ISO S-5	160	110	14,6	83	10	0,40

- **Stub Flange DIN**
- short spigot
- injection moulded
- **Butt-welding**
- PPs grey**



Code 012

Dimension	Code	Detail	da(OD) mm	s mm	L mm	d3 mm	d4 mm	h mm	Weight/ Gewicht
110	17.012.0110.33	110X3,4 SDR33 ISO S-16	110	3,4	80	125	158	18	0,28
160	17.012.0160.33	160X4,9 SDR33 ISO S-16	160	4,9	80	175	212	18	0,52
180	17.012.0180.33	180X5,5 SDR33 ISO S-16	180	5,5	95	183	212	18	0,42
200	17.012.0200.33	200X6,2 SDR33 ISO S-16	200	6,2	113	232	268	18	1,12
225	17.012.0225.33	225X6,9 SDR33 ISO S-16	225	6,9	113	235	268	18	0,86
250	17.012.0250.33	250X7,7 SDR33 ISO S-16	250	7,7	132	285	320	20	1,54
280	17.012.0280.33	280X8,6 SDR33 ISO S-16	280	8,6	128	291	320	20	1,20
315	17.012.0315.33	315X9,7 SDR33 ISO S-16	315	9,7	136	335	370	20	2,16
355	17.012.0355.33	355X10,9 SDR33 ISO S-16	355	10,9	120	373	430	23	4,93
400	17.012.0400.33	400X12,3 SDR33 ISO S-16	400	12,3	155	427	482	26	4,18
500	17.012.0500.33	500X15,3 SDR33 ISO S-16	500	15,3	120	530	585	33	5,26
20	17.012.0020.11	20X1,9 SDR11 ISO S-5	20	1,9	52	27	45	7	0,02
25	17.012.0025.11	25X2,3 SDR11 ISO S-5	25	2,3	50	33	58	9	0,03
32	17.012.0032.11	32X2,9 SDR11 ISO S-5	32	2,9	50	40	68	10	0,04
40	17.012.0040.11	40X3,7 SDR11 ISO S-5	40	3,7	50	50	78	11	0,06
50	17.012.0050.11	50X4,6 SDR11 ISO S-5	50	4,6	53	61	88	12	0,08
63	17.012.0063.11	63X5,8 SDR11 ISO S-5	63	5,8	50	75	102	14	0,13
75	17.012.0075.11	75X6,8 SDR11 ISO S-5	75	6,8	50	89	122	16	0,19
90	17.012.0090.11	90X8,2 SDR11 ISO S-5	90	8,2	82	105	138	17	0,32
110	17.012.0110.11	110X10,0 SDR11 ISO S-5	110	10	80	125	158	18	0,43
140	17.012.0140.11	140X12,7 SDR11 ISO S-5	140	12,7	92	155	188	25	0,70
160	17.012.0160.11	160X14,6 SDR11 ISO S-5	160	14,6	92	175	212	25	0,91

Agru

Manufacturer:

AGRU Kunststofftechnik GmbH

A - 4540 Bad Hall Austria

tel: +43 (0) 7258 790 - 0

fax: +43 (0) 7258 3863

e-mail: office@agru.at

internet: www.agru.at

Distributor:



香港 灣仔 謝菲道90號 豫港大廈5樓
5/F Henan Building, 90 Jaffe Road, Wanchai, Hong Kong
Tel: +852 2528-0999
Fax: +852 2528-3113
Email: info@kembla.com.hk