

# 30C



## FEATURES & BENEFITS

- Robust and high quality bronze body with integral seating surfaces
- Offers the ultimate in dependable service wherever minimum pressure drop is important
- WRAS Approved for use with potable water
- Inside screw pattern with non-rising stem



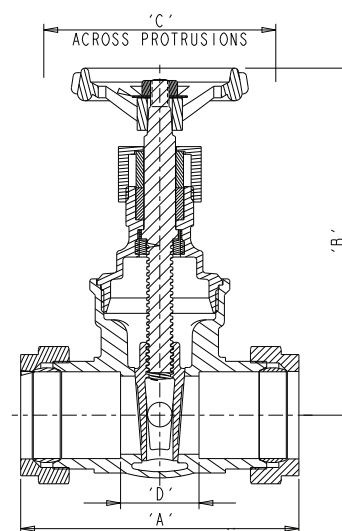
## MATERIALS

| Part                 | Material      | Specification                     |
|----------------------|---------------|-----------------------------------|
| Body                 | Bronze        | BS EN 1982 (CC491K)               |
| Bonnet               | Bronze        | BS EN 1982 (CC491K)               |
| Stem                 | DZR Brass     | BS EN 12164 CW602N                |
| Disc                 | Bronze        | BS EN 1982 (CC491K)               |
| Stem Retainer        | DZR Brass     | BS EN 12164 CW602N                |
| Packing Ring         | Asbestos Free |                                   |
| Gland (28-54 only)   | Brass         | BS EN 12164 CW614N                |
| Packing Nut          | Brass         | BS EN 12164 CW614N                |
| Handwheel            | Aluminium     | -                                 |
| Identification Plate | Aluminium     | -                                 |
| Handwheel Nut        | Brass         | BS EN 12164 CW614N                |
| Compression Olive    | Brass         | BS EN 12449:1999 CW505L OR CW507L |
| Compression Nut      | Brass         | BS EN 12165 CW617N                |

## DIMENSIONS AND WEIGHTS

| SIZE | A (mm) | B (mm) | C (mm) | D (mm) | WEIGHT (kg) |
|------|--------|--------|--------|--------|-------------|
| 15mm | 69     | 74     | 48     | 26.5   | 0.34        |
| 22mm | 75     | 86     | 69     | 23.5   | 0.50        |
| 28mm | 86     | 105    | 76     | 25.5   | 0.70        |
| 35mm | 100    | 110    | 81     | 30.5   | 0.95        |
| 42mm | 111    | 130    | 94     | 34.5   | 1.45        |
| 54mm | 133    | 152    | 100    | 37     | 2.50        |

## DIMENSIONAL DRAWING



## PRESSURE/TEMPERATURE RATINGS COMPRESSION

|                |           |      |      |      |     |     |     |     |     |
|----------------|-----------|------|------|------|-----|-----|-----|-----|-----|
| PRESSURE (bar) | 16.0      | 14.3 | 12.6 | 10.0 | 8.7 | 7.8 | 6.9 | 6.0 | 5.0 |
| TEMPERATURE °C | -10 to 30 | 40   | 50   | 65   | 80  | 90  | 100 | 110 | 120 |

Intermediate pressure ratings shall be determined by interpolation

Pressure Rating: PN16 • UK End Connection: Compression ends to BS EN 1057: 2006: Half hard R250 • Operator: Handwheel.  
 Gate valves are best for services that require infrequent valve operation and where the disk is kept either fully open or closed. They are not practical for throttling • Specification: Valves are manufactured in accordance with BS EN 12288: 2003 (formerly BS 5154) PN20 for Series B ratings, but are limited to the pressure/temperature ratings detailed in BS EN 1057: 2006 for compression end fittings.  
 This valve is to be used on Group 2 liquids only, as defined by the Pressure Equipment Directive 97/23/EC.



PO BOX 719, IPSWICH, IP1 9UD  
 HOME SALES: +44 (0)1744 458670  
 EXPORT SALES: +44 (0)1744 458671  
 TECHNICAL HELPLINE: 0845 604 1790

FAX: +44 (0)1744 26912  
 EMAIL: [uksales@hattersley.com](mailto:uksales@hattersley.com)  
 EMAIL: [export@hattersley.com](mailto:export@hattersley.com)  
[www.hattersley.com](http://www.hattersley.com)

Every effort has been made to ensure that the information contained in this publication is accurate at the time of publishing. Crane Ltd assumes no responsibility or liability for typographical errors or omissions or for any misinterpretation of the information within the publication and reserves the right to change without notice.

H\_30C\_06\_2010