



MÜCHER DICHTUNGEN®

COMPANY



CIVILS

CIVILS



INDUSTRIAL

INDUSTRIAL



PLUMBING

PLUMBING

TECHNICAL BROCHURE

www.muecher.com 



MÜCHER
PRODUCT-FINDER

PIPE TABLE

COMPANY	03	Lateral Connector LTC	64
About Muecher	03	Core Drill	65
THE MÜCHER-COMMITMENT	04	Lateral Connector M40	66
UNIQUE SELLING POINTS		Lateral Connector M140	68
TOX®-Technology	05	B-Ring	70
Advanced Bolting System	06	ACCESSORIES	
“Lock in Place“ Rubber Profile	07	Non-Rattle Ring	72
MATERIAL SPECIFICATIONS		Antifreeze Ring for Hydrants	74
Stainless Steels	08	Lubricant MGM	76
Caoutchouc Elastomers	09	End Cap MEK	78
STANDARDS & APPROVALS		INDUSTRIAL	80
Quality Management System CE-Marking	11	COUPLINGS	
Construction Products Regulation	12	FKM-Coupling RESISTOR	82
National technical approval (abZ)	12	Multi-Connector TRANSFER	84
CIVILS	13	Standard Coupling Canada Plus, Type 2B for all pipe materials	86
COUPLINGS & ADAPTORS		Adaptor Coupling MAC	88
Multi-Flexible-Coupling GENIUS	14	Drain Coupling MDC	90
Coupling Canada Plus, Type 2A for clay pipes	16	PLUMBING	92
Coupling Canada Plus, Type 2B for clay pipes	18	INTERNAL CONNECTIONS	
Standard Coupling Canada Plus, Type 2B for all pipe materials	20	Internal Drain Connector MRS New!	94
BML-Connector	24	Drain Connector MAS New!	96
Extra Wide Coupling Canada TITAN XL	26	J-Bend Seal New!	98
Coupling Kit EASY-REP MER	30	Push-in Adapter MSA New!	100
Adaptor Coupling MAC	32	Single Pipe Connector MGA	102
Drain Coupling MDC	36	Multi Pipe Connector MKA	106
Push-in Adapter MSA New!	38	Multi Pipe Connector Kit MHR	117
JOINTS & RINGS		EXTERNAL CONNECTIONS	
Roll-Ring MRR	40	Adaptor Coupling MAC	118
P-Ring	42	Drain Coupling MDC	120
Ü-P-Ring	44	Coupling Canada Plus MSC	122
M-P-Ring	46	Multi-Flexible-Coupling GENIUS	124
Ü-Ring	48	SPECIAL CONNECTIONS	
A-Ring	50	Flexible Tee MFA	126
MULTI-STEP	52	Flexible Elbow MFB	128
SEALS FOR CONCRETE		End Cap MEK	130
Wedge-Shaped Seal MKG	54	Roll-Ring MRR	132
BKL Jointing Element	56	Lubricant MGM	134
Z-Joint for Road Gullies	58	PIPE TABLE	136
LATERAL CONNECTIONS		Pipe Outside diameter Civils Plumbing	136
Sewer Saddle TWISTEE®	60		
Sewer Saddle T-FLEX	62		



ABOUT MÜCHER

Mücher Dichtungen is part of the California based worldwide Mission Rubber group of companies; **the inventors of the rubber flexible coupling over 60 years ago.**

Since 1955 Mücher is developing, manufacturing and distributing couplings and seals for all pipe materials used in the low pressure civils and drainage industry. In general Mücher products are used when two pipes with both different diameters and materials need jointing. This requires a custom-made consulting to find a reliable long-term solution.

Whereas Mücher's core business used to be in the civils and drainage industry only, nowadays the business fields have been extended and include both plumbing and industry.

Due to working closely with various pipe manufactures, combined with the long-term presence on the European market place a product range has been formed that offers a reliable and permanent solution for almost any possible application. Especially the sealing technologies for repair solutions require a wide knowledge and expertise for all the different pipe materials and connection systems.

The heart of our manufacturing is the area of customized solutions where Mücher with its 60 year's experience is always identifying the right sealing system, is manufacturing the correct solution and is then supplying to site on time.



The majority of the product range is manufactured at the European headquarters in Frechen, near Cologne. Customized solutions for the UK market are also manufactured at Mücher's Sheffield based daughter company. Mücher and its distributors are present in over 30 different countries.

Together with its customers Mücher is permanently developing new and innovative products for below and above ground applications. Mücher's products are known for their high quality, for being easy to install and for solving problems on site. A good example of a new product development is the Multi-Flexible-Coupling GENIUS.

New product developments are tested in Mücher's own test laboratory against all requirements resulting from the relevant standard. Any new developed seal will run through both material and functional tests. Before any product launch the new developed seal will be tested on live sites to ensure it fulfills all requirements and ease of installation on site. Therefore it is assured that only products that meet the high Mücher quality standard will exit our factory.

Since 1993 Mücher has ran a quality management system and is certified to DIN EN ISO 9001:2015.

THE MÜCHER-COMMITMENT

SUMMARIZES THE KEY COMPETENCE OF THE COMPANY.



GUIDANCE

You can trust us – we are consulting you the right way! Both commercial and technical consulting have got the highest priority for Mücher. It is our ambition to offer solutions to our customers that are both technically reliable and commercially sustainable. The competence of our Sales & Technical team is outstanding and will continue to develop through training courses and further education.

The guideline to improve our support and consulting further is described in our quality management system according to DIN EN ISO 9001:2008 which was launched over 20 years ago.

DELIVERY

Ordered a.m. – supplied next day! Any a.m. incoming standard sized orders can be supplied next day either for stock or directly to site. Our operational processes from consulting to supplying is completed within a short period of time.

INNOVATION

Our innovations help improving problems on site! It is our companies aim to develop new products and to improve and further develop the existing range of products through rivaling new and innovative technologies. A good example is the initial launch of the TOX®-Technology to the sewerage industry. The TOX®-Technology eliminates the corrosion of the stainless steel components and increases the life circle.

AVAILABILITY

100% availability creates confidence! Our entire product range is stocked in bulk. This includes both core range items with a high turn around as well as special items with a lower demand. The manufacturing department is the heart of our company. **This is where we manufacture bespoke made large standard couplings and bushes on special customer demands and on time.**

Our 100% availability and delivery capacity allows us to offer a proper solution for almost any problem within the sewerage industry.

SECURITY

On the safe side with Mücher!

All our products comply with and exceed the requirements of the latest DIN and European standards as well as national and international approvals. If it says MÜCHER you can depend on a safe installation process for the installer.

The European Technical Approval ETA-09/0248 assumes a **life circle for Mücher couplings of 50 years, providing proper packaging, stocking and installation.**

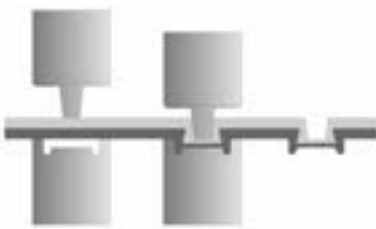


INNOVATION

Couplings and other MÜCHER joints and rings are constantly developed further, both in product design and material. They are characterised by quality, long-life cycle and user friendliness. **Our innovations are in the detail!**

TOX®-TECHNOLOGY

Traditional shear band fabrication entails spot welding of clamps to the shear band. Whereas with TOX®-TECHNOLOGY heat created during the welding process actually burns the stainless steel. The composition of the stainless steel is attacked and intercrystalline corrosion can result at the welding points.

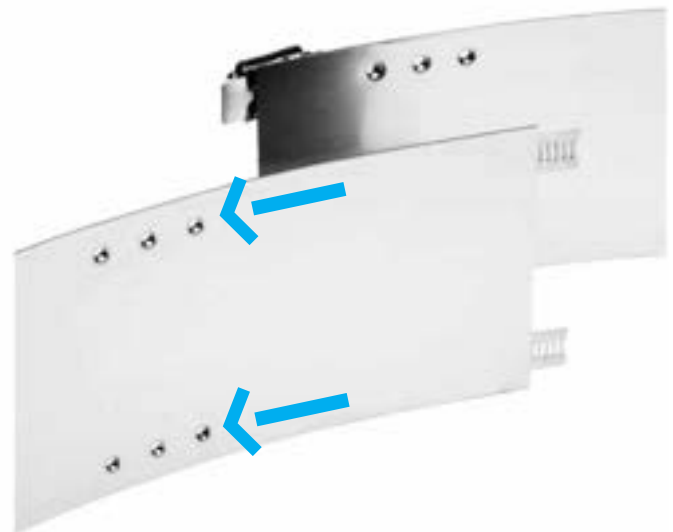
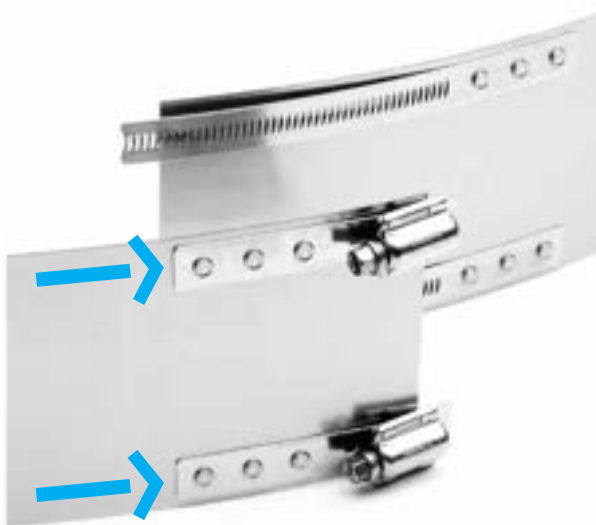


The shear bands on MÜCHER couplings incorporate the latest in stainless steel fastening techniques:

TOX®-TECHNOLOGY (Clinching process, no spot welds)

The negative aspects associated with spot welding are eliminated in this advance process, yet the bond meets or exceeds all relevant tensile strength and shear requirements.

Properties	TOX®-Point	Spot Weld
Corrosion	none	yes
Structural Change	none	yes
Dynamic Resilience	excellent	not perfect
Static Resilience	good	excellent
Energy Input	minimal	extremely high
Environment friendly manufacturing	excellent	bad (steams)

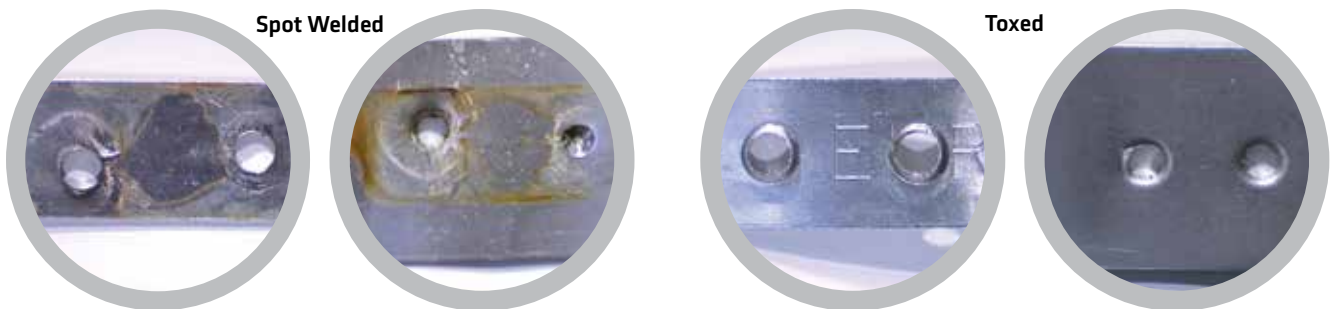


SALT SPRAY TEST SHOWS DIFFERENT CORROSION RESISTANCES

In a salt spray test according to DIN 50 021 SS (neutral) the different corrosion resistances of spot welded and toxed connection were compared.

Test Certificate No. 22000197 MPA NRW

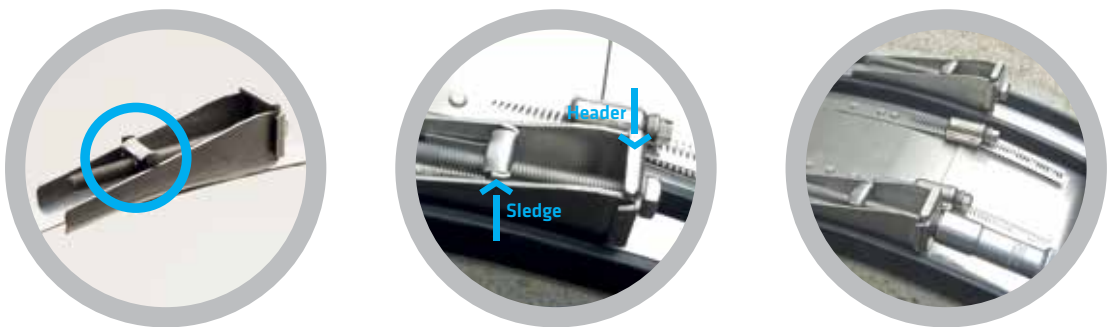
After only a few days a clear corrosion was visible on the spot welded test blocks. The toxed (clinched) stainless steel bands did not show any corrosion after 504 hours (test ended after 3 weeks).



ADVANCED BOLTING SYSTEM

All of Muecher's large diameter couplings (from MSC 635) and all extra wide couplings are fitted with the all new advanced bolting system. Choosing the right clamp type (hi-torque, medium duty or bolted) and applying the right tightening torque is essential for large diameter couplings.

The bolting system is manufactured from stainless steel grade 1.4401 (AISI 316). It is positioned on the EPDM rubber sleeve and ensures the necessary compression to form a permanently sealed joint.



The purpose of this new development is to make the installation of the coupling to the pipe considerably quicker and much easier. The new bolting system has been engineered so that the sledge runs through the header casing, eliminating any protrusion of the bolt head.

This enables the installer to use a standard 13mm socket wrench which will reduce installation time by more than 50%.

Compared to other bolting systems, the advanced Mission bolting systems offers the following advantages:

- Even better sealing performance by wider clamps
- Easier installation by sledge system running through header
- Twice as quick to install than standard systems
- No special tools required, just use a standard 13 mm socket wrench
- Less risk of injury, therefore more health and safety conscious



„LOCK IN PLACE“ RUBBER PROFILE

Mücher rubber sleeves are fitted with a unique rubber profile. The “lock in place” profile made from EPDM rubber ensures that the clamps and shear band are properly positioned on the sleeve and remain firmly in place during transit, stocking or installation on site.

The necessary compression of the rubber sleeve can only be guaranteed by a proper positioning of the stainless steel components.

Furthermore to the external based “lock in place” profile, the internal based sealing lines achieve a better sealing effect. Through the stepped sealing lines, additional EPDM sealing material can be compressed. This is of special advantage for sewerage pipes with a rough surface such as concrete pipes.



STAINLESS STEELS

Stainless steel refers to a range of iron based alloys which rely on their chromium content for resistance to corrosion. Research in a number of countries worldwide has shown that in normal soils austenitic stainless steel with a 17% chromium and 9% nickel content gives satisfactory performance, with a design life in excess of 100 years.

Whereas in poorly drained gravels, industrial or colliery spoil and in cases where the ground or groundwater contains chlorides (exceeding 1000 ppm) pitting of the steel can occur. In these circumstances the application of a protective wrapping such as "Denso tape" will give adequate protection. Alternatively, in these circumstances an austenitic stainless steel containing molybdenum (minimum 2%) will give better corrosion resistance without the need for additional protection.

Mücher supplies two grades of austenitic stainless steel to suit either normal conditions or conditions when additional corrosion resistance is required.

For use in normal conditions Mücher's standard products use components manufactured from grade 1.4301 (AISI 304) austenitic stainless steel to DIN EN 10088-2.

For those conditions requiring higher corrosion resistance then components manufactured from grade 1.4401 (AISI 316) austenitic stainless steel to DIN EN 10088-2 is available, too. This grade contains 2% molybdenum and is especially suitable for marine environments.

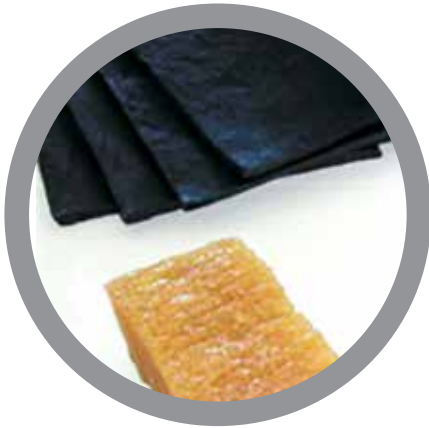
DIN EN 100 88	Trade Name	International Term	COMPOUNDS-%			
			Carbon (C)	Chromium (Cr)	Nickel (Ni)	Molybdenum (Mo)
1.4301	V2A	BS 304 / AISI 304	≤ 0,07	17,5-19,5	8,0-10,5	-
alternatively						
1.4307	V2A	BS 304 / AISI 304	≤ 0,03	17,5-19,5	8,0-10,0	-
1.4567	V2A	BS 304 / AISI 304	≤ 0,04	17,0-19,0	8,5-10,5	-
1.4404	V4A	BS 316 / AISI 316	≤ 0,03	16,5-18,5	10,0-13,0	2,0-2,5
alternatively						
1.4401	V4A	BS 316 / AISI 316	≤ 0,07	16,5-18,5	10,5-13,5	2,0-2,5
1.4571	V4A	BS 316 / AISI 316	≤ 0,08	16,5-18,5	10,5-13,5	2,0-2,5

The welding of stainless steel requires special competence and care as the steel can potentially corrode, resulting in an intercrystalline attack.

Since 2001 Mücher successfully applies the TOX®-Technology which makes corrosion almost impossible.



CAOUTCHOUC ELASTOMERS



Rubber is a very flexible and elastic material with a high restoring force. In the technical application this material is officially named elastomer.

The raw materials are natural or synthetic elastomers. A rubber mixture contains different additives. Through addition of heat, rubber becomes vulcanised. This process enables the elasticity of rubber. Deformation within the elastic range can be repeated limitless times without the change of the initial shape. As soon as the deformation forces are released, the elastomer returns back into its initial shape.

Elastomers are resistant against many acids, leaches and aromatic hydrocarbons which appear in the private, public and industrial sewage. For the sealing technology it is important to estimate this resistance, knowing the conditions of the joint such as the concentration of the medium, temperature, pressure as well as the static and dynamic strains.

The ideal elastomer material which is resistant to all gases and fluids does not exist yet. It is necessary to select the material which is the most suitable to meet the requirements demanded.

The most common elastomer types used in the sewage technology are EPDM, SBR, NBR, NR and FKM which all meet the current standards, such as DIN 4060 and DIN EN 681.



RESISTANCE OF ELASTOMERS

The following listed values are for guidance only. The values and characteristics cannot generally be transferred to all operating conditions.

PROPERTIES	EDPM	SBR	NBR	NR	FKM
Ozone Resistance	1	4	4	4	2
Oil Resistance	4	5	2	6	1
Fuel Resistance	5	6	2	6	1
Acid Resistance	1	3	4	3	1
Leach Resistance	1	3	4	3	1
Gas Permeability	4	4	2	5	2
Electric Resistance	2	2	5	1	2
Rebound Resilience	3	3	3	2	3
Tear Strength	3	2	2	1	2
Temperature Resistance	-40° bis + 120°C	-40° bis + 80°C	-30° bis + 100°C	-40° bis + 80°C	-40° bis + 200°C
Temporary max. Temperature	+ 160°C	+ 130°C	+ 130°C	+ 130°C	+ 230°C

1 = excellent 2 = good 3 = satisfactory 4 = sufficient 5 = poor 6 = fail

SHORT DESCRIPTION OF CAOUTCHOUC TYPES

EPDM (Ethylene - Propylene - Diene - Monomer)

Contains extraordinary resistance to oxygen, ozone and further atmospheric influences. UV-light resistant.

SBR (Styrene Butadiene Rubber)

One of the major synthetic rubbers with similar properties as natural rubber (NR). Compared to NR the abrasion resistance of SBR is superior but with an associated deterioration of the elasticity.

NBR (Acrylonitrile Butadiene Rubber)

The basis for NBR is a mixture of acrylonitrile and butadiene. The higher the acryl percentage, the better the resistance against mineral oils and fuels but with an associated deterioration of the elasticity and the cold flexibility.

NR (Natural Rubber)

The raw material is latex milk, extracted from caoutchouc trees. Unlike several synthetic rubbers, NR particularly possesses excellent elastic qualities.

FKM (Fluorinated Rubber)

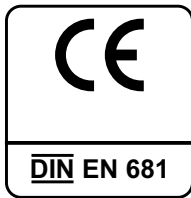
FKM is a copolymer of highly fluorinated hydrocarbon and has very good resistance to media, ozone and aging. It is used in particular for applications with high process temperatures and aggressive media.



QUALITY MANAGEMENT SYSTEM, CE-MARKING

Since 1993 Mücher's quality management system according to DIN EN ISO 9001:2015 is the guideline for manufacturing, product development, sales and distribution. Developing the quality management system further is one of Mücher's strategic aims.

The compliance of Mücher products with all EU standards and approvals allows Mücher to CE-mark its products. With the CE-marking, Mücher declares that all products meet the requirements of the following standards both for functional and material requirements:



DIN 4060





Bestehendes Zertifikat: 28. Januar 2022
 Dieses Zertifikat ist gültig bis: 27. Januar 2025
 Zertifikat-Nr.: 10412903

Erstmögliche Zulassung: ISO 9001 - 01. Februar 1993

Zertifikat

Hiermit wird bescheinigt, dass das Managementsystem von:

Mücher Dichtungen GmbH & Co. KG

Europaallee 43, 50226 Frechen, Deutschland

durch LRQA geprüft und bewertet wurde und den folgenden Normen entspricht:

ISO 9001:2015

Gültigkeits-Nr.: ISO 9001 – 0017858

Das Managementsystem ist anwendbar für:

Entwicklung, Produktion und Vertrieb von Dichtungen der drucklosen Entwässerung im Tiefbau und in der Haustechnik.


 Paul Graaf



Area Operations Manager, Europe
 Ausgestellt von: Lloyd's Register Deutschland GmbH
 für und im Auftrag von: Lloyd's Register Quality Assurance Limited

LRQA Group Limited, its affiliates and subsidiaries and their respective officers, employees or agents are, individually and collectively, referred to in this clause as 'LRQA'. LRQA assumes no responsibility and shall not be liable to any person for any loss, damage or expense caused by reliance on the information or advice in this document or howsoever provided, unless that person has signed a contract with the relevant LRQA entity for the provision of this information or advice and in that case any responsibility or liability is exclusively on the terms and conditions set out in that contract.
 Issued by: Lloyd's Register Deutschland GmbH, Buzzaellerhofallee 3, 50829 Köln, Deutschland for and on behalf of: Lloyd's Register Quality Assurance Limited, 1 Trinity Park, Bickenhill Lane, Birmingham B37 7YS, United Kingdom

Page 1 of 1

CONSTRUCTION PRODUCTS REGULATION

The European construction products regulation is in place since 01.07.2013.

As a manufacturer of building and construction products, Mücher Dichtungen® declares the conformity of all products according to the European standards and approvals in its declaration of performance.

NATIONAL TECHNICAL APPROVAL (ABZ)

The national technical approval, or abZ for short, is the 'original' among the verifications of fitness for use of construction products. It has been granted by DIBt since 1968.

The abZ regulates those product properties that are of regulatory relevance as well as the product's fields(s) of use and aspects relating to processing, transport, storage, marking and confirmation of conformity.





CIVILS



Multi-Flexible-Coupling

GENIUS

- + One coupling for all pipe materials
- + For above and below ground
- + With integrated bushes
- + Resistant to 2.5 bar

Multi-Flexible-Coupling GENIUS - for the connection of all pipe systems with different or same outside diameters

The Multi-Flexible-Coupling GENIUS with integrated bushes connects all plain ended pipes within one dimension and can be used inside and outside of buildings.

The right solution always to hand: What ever pipe material needs to be jointed within one dimension, the GENIUS will always be the right solution for the contractor.



INSTALLATION



Bush at smaller pipe remains integrated – fold out and remove bush at larger pipe.

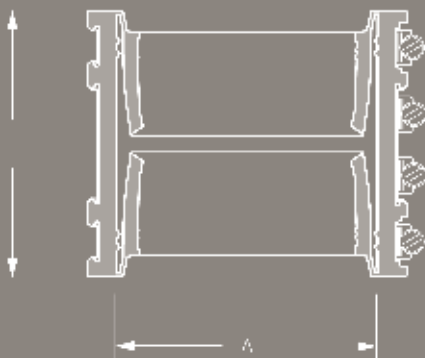


Slide GENIUS over larger pipe.



Push smaller pipe into GENIUS and tighten clamps and shear band reciprocally.

DESCRIPTION



TECHNICAL SPECIFICATION

Multi-Flexible-Coupling GENIUS with integrated bushes connects all plain ended pipe materials within one dimension with different or same outside diameters.

Pipe 1 DN/Material _____
 Pipe 2 DN/Material _____
 Article Number _____
 _____ Qty _____ Price/Unit _____ Total

Manufacturer: MÜCHER DICHTUNGEN®, D-50226 Frechen,
 T +49 2234 928 03-0, F-55
 Pressure Tightness: 2.5 bar water / -0.3 bar vacuum
 Jetting Resistance: 120 bar
 Corrosion Resistance: TOX®-Technology
 Sealing Material: EPDM or Nitrile (NBR) rubber with lock in place profile according to DIN EN 681-1
 Stainless Steel: AISI 304/1.4301, alternatively AISI 316/1.4404 according to DIN EN 10088-2
 Temperature Resistance: -40°C to +120°C, temporary max. temperature +160°C
 Standard/Approval: Abz Z42.5-373



PRODUCT RANGE

MULTI-FLEXIBLE-COUPLING GENIUS						
Article Number	Reference	A Size Range (mm)	L Length (mm)	resistant to (bar)	Nm	Weight (kg)
84000100	GENIUS DN 100	108-137	120	2,5	10	1,3
84000125	GENIUS DN 125	123-162	120	2,5	10	1,5
84000150	GENIUS DN 150	158-192	150	2,5	10	2,4
84000200	GENIUS DN 200	198-265	150	2,5	10	3,2
84000250	GENIUS DN 250	248-326	146	2,5	13	6,1
84000300	GENIUS DN 300	313-385	186	2,5	13	8,1

APPLICATION SCHEDULES

DN 100	GENIUS-OPTION Size Range (mm)	DN 125	GENIUS-OPTION Size Range (mm)	DN 150	GENIUS-OPTION Size Range (mm)
Clay — Clay	125-137 125-137	Clay — Clay	150-162 150-162	Clay — Clay	176-192 176-192
PP/PVC/PE GRP Fib. Cement Ductile Iron Cast Iron Ultra-Rib/ Twinwall	Clay 108-125 125-137	PP/PVC/PE GRP Fib. Cement Ductile Iron Cast Iron Ultra-Rib/ Twinwall	Clay 123-150 150-162	PP/PVC/PE GRP Fib. Cement Ductile Iron Cast Iron Ultra-Rib/ Twinwall	Clay 158-176 176-192
PP/PVC/PE GRP Fib. Cement Ductile Iron Cast Iron Ultra-Rib/ Twinwall	108-125 108-125	PP/PVC/PE GRP Fib. Cement Ductile Iron Cast Iron Ultra-Rib/ Twinwall	123-150 123-150	PP/PVC/PE GRP Fib. Cement Ductile Iron Cast Iron Ultra-Rib/ Twinwall	158-176 158-176
DN 200	GENIUS-OPTION Size Range (mm)	DN 250	GENIUS-OPTION Size Range (mm)	DN 300	GENIUS-OPTION Size Range (mm)
Clay N+H — Clay N+H	231-265 231-265	Clay N+H — Clay N+H	285-326 285-326	Clay N+H — Clay N+H	342-385 342-385
PP/PVC/PE GRP Fib. Cement Ductile Iron Cast Iron Ultra-Rib/ Twinwall	Clay 198-231 231-265	PP/PVC/PE GRP Fib. Cement Ductile Iron Cast Iron Ultra-Rib/ Twinwall	Clay 248-285 285-326	PP/PVC/PE GRP Fib. Cement Ductile Iron Cast Iron Ultra-Rib/ Twinwall	Clay 313-342 342-385
PP/PVC/PE GRP Fib. Cement Ductile Iron Cast Iron Ultra-Rib/ Twinwall	198-231 198-231	PP/PVC/PE GRP Fib. Cement Ductile Iron Cast Iron Ultra-Rib/ Twinwall	248-285 248-285	PP/PVC/PE GRP Fib. Cement Ductile Iron Cast Iron Ultra-Rib/ Twinwall	313-342 313-342



Coupling

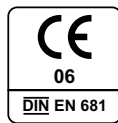
CANADA PLUS MC TYP 2A

- + Coupling for clay pipes
- + For above and below ground
- + For plain ended pipes within the same dimension
- + Resistant to 0.6 bar

Coupling Canada Plus Type 2A - for connecting clay pipes within same dimension

The coupling Canada Plus Type 2A connects plain ended clay pipes within same dimension and is compensating differences in outside diameters of max. 6 mm.

The coupling Canada Plus Type 2A can be used for applications above and below ground as well as inside and outside of buildings.



INSTALLATION



Position plain ended pipes.

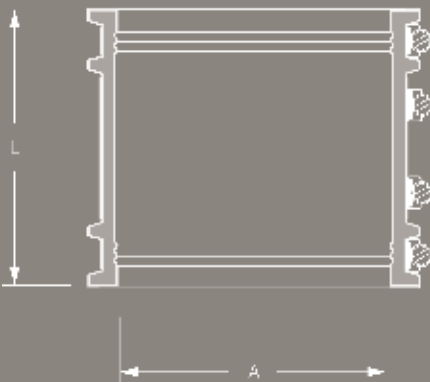


Slide coupling over one plain end.



Center coupling over joint. Tighten clamps and shear band reciprocally.

DESCRIPTION



TECHNICAL SPECIFICATION

Coupling Canada Plus Type 2A for connecting clay pipes within same dimension for applications above and below ground as well as inside and outside of buildings.

Clay Pipe DN/Strength _____

Article Number _____
 ___ Qty ___ Price/Unit ___ Total

Manufacturer: MÜCHER DICHTUNGEN®, D-50226 Frechen,
 T +49 2234 928 03-0, F-55

Pressure Tightness: 0.6 bar water

Jetting Resistance: 120 bar

Corrosion Resistance: TOX®-Technology

Sealing Material: EPDM rubber with lock in place profile according to DIN EN 681-1

Stainless Steel: AISI 304/1.4301 according to DIN EN 10088-2

Temperature Resistance: -40°C to +120°C, temporary max. temperature +160°C

Standard/Approval: DIN EN 295-4



PRODUCT RANGE

COUPLING CANADA PLUS, TYPE 2A FOR CLAY PIPES							
Article Number	Reference	Nominal Diameter (DN)	A Size Range (mm)	L Length (mm)	resistant to (bar)	Nm	Weight (kg)
77100135	Canada Plus MC 135	100	120-135	106	0,6	6	0,6
77125165	Canada Plus MC 165	125	150-165	106	0,6	6	0,7
77150190	Canada Plus MC 190	150	175-190	106	0,6	6	0,8
77200250	Canada Plus MC 250	200 N	235-250	106	0,6	6	1,0
77200260	Canada Plus MC 260	200 H	245-260	165	0,6	6	1,0
77250305	Canada Plus MC 305	250 N	290-305	165	0,6	10	1,9
77250325	Canada Plus MC 325	250 H	310-325	165	0,6	10	2,0
77300360	Canada Plus MC 360	300 N	345-360	165	0,6	10	2,2
77300385	Canada Plus MC 385	300 H	370-385	165	0,6	10	2,4
77350425	Canada Plus MC 425	350 N	410-425	165	0,6	13	2,7
77400495	Canada Plus MC 495	400 N	475-495	165	0,6	13	3,1
77400505	Canada Plus MC 505	400 H	485-505	165	0,6	13	3,1
77500590	Canada Plus MC 590	500 N	570-590	165	0,6	13	3,6
77500620	Canada Plus MC 620	500 H	600-620	165	0,6	13	3,9



Coupling

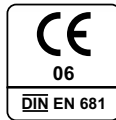
CANADA PLUS MSC TYP 2B

- + Coupling for clay pipes
- + For above and below ground
- + Combinable with bushes
- + Resistant to 2.5 bar

Coupling Canada Plus Type 2B – for connecting clay pipes within same or different dimensions

The coupling Canada Plus Type 2B connects plain ended clay pipes within same or different dimensions and is compensating differences in outside diameters of maximum 12 mm. Larger differences will require the use of bushes.

The coupling Canada Plus Type 2B can be used for applications above and below ground as well as inside and outside of buildings.



INSTALLATION



Position plain ended pipes.

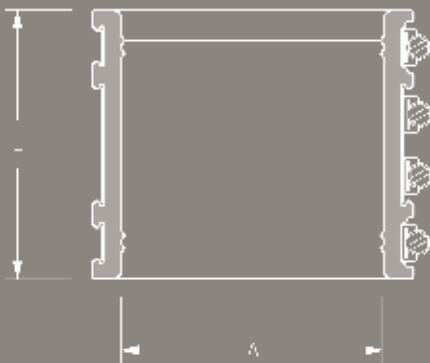


Slide coupling over one plain end.



Center coupling over joint. Tighten clamps and shear band reciprocally.

DESCRIPTION



TECHNICAL SPECIFICATION

Coupling Canada Plus Type 2B for connecting clay pipes within same or different dimensions for applications above and below ground as well as inside and outside of buildings.

Clay Pipe DN/Strength _____

Article Number _____
 Qty Price/Unit Total

Manufacturer: MÜCHER DICHTUNGEN®, D-50226 Frechen,
 T +49 2234 928 03-0, F-55

Pressure Tightness: 2.5 bar water / -0.3 bar vacuum

Jetting Resistance: 120 bar

Corrosion Resistance: TOX®-Technology

Sealing Material: EPDM or Nitrile (NBR) rubber with lock in place profile according to DIN EN 681-1

Stainless Steel: AISI 304/1.4301, alternatively AISI 316/1.4404 according to DIN EN 10088-2

Temperature Resistance: -40°C to +120°C, temporary max. temperature +160°C

Standard/Approval: DIN EN 295-4



PRODUCT RANGE

COUPLING CANADA PLUS, TYPE 2B FOR CLAY PIPES							
Article Number	Reference	Nominal Diameter (DN)	A Size Range (mm)	L Length (mm)	resistant to (bar)	Nm	Weight (kg)
73100137	Canada Plus MSC 137	100	120-137	120	2,5	6	0,9
73125162	Canada Plus MSC 162	125	137-162	120	2,5	6	1,1
73150200	Canada Plus MSC 200	150	175-200	150	2,5	10	1,7
73200250	Canada Plus MSC 250	200 N	225-250	150	2,5	10	2,0
73200275	Canada Plus MSC 275	200 H	250-275	150	2,5	10	2,3
73250310	Canada Plus MSC 310	250 N	285-310	190	2,5	13	3,5
73250335	Canada Plus MSC 335	250 H	310-335	190	2,5	13	3,8
73300360	Canada Plus MSC 360	300 N	335-360	190	2,5	13	4,0
73300385	Canada Plus MSC 385	300 H	355-385	190	2,5	13	4,3
73350430	Canada Plus MSC 430	350 N	400-430	190	2,5	13	4,7
73400495	Canada Plus MSC 495	400 N	465-495	190	2,5	13	5,2
73400510	Canada Plus MSC 510	400 H	480-510	190	2,5	13	5,5
73500600	Canada Plus MSC 600	500 N	570-600	190	2,5	13	6,3
73500620	Canada Plus MSC 620	500 H	590-620	190	2,5	13	6,4
73600700	Canada Plus MSC 700	600 N	670-700	190	1,0	20	7,9
73600735	Canada Plus MSC 735	600 H	705-735	190	1,0	20	8,3
73700850	Canada Plus MSC 850	700 H	820-850	190	1,0	20	9,5
73800950	Canada Plus MSC 950	800 H	920-950	190	1,0	20	10,8



Standard Coupling

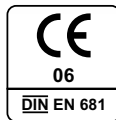
CANADA PLUS MSC TYP 2B

- + For all pipe materials
- + For above and below ground
- + For usage with bushes
- + Resistant to 2.5 bar

Standard Coupling Canada Plus Type 2B – for the connection of all pipe systems with different or same outside diameters

The Standard Coupling Canada Plus Type 2B connects all plain ended pipes within same or different dimensions and is compensating differences in outside diameters of max. 12 mm. Larger differences will require the use of bushes.

The Standard Coupling Canada Plus Type 2B can be used for applications above and below ground as well as inside and outside of buildings.



INSTALLATION



Position plain ended pipes.

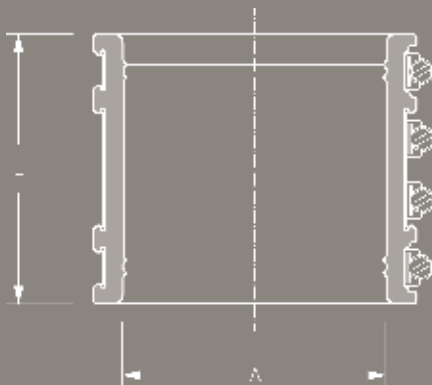


Slide coupling over one plain end.



Center coupling over joint. Tighten clamps and shear band reciprocally.

DESCRIPTION



TECHNICAL SPECIFICATION

Standard Coupling Canada Plus Type 2B for connection of all plain ended pipe materials with different or same outside diameters for applications above and below ground as well as inside and outside of buildings. Differences in outside diameters of more than 12 mm will require the use of bushes.

Pipe 1	DN/Material	_____
Pipe 2	DN/Material	_____
Article Number		_____
	Qty	Price/Unit Total

Manufacturer: MÜCHER DICHTUNGEN®, D-50226 Frechen, T +49 2234 928 03-0, F-55

Pressure Tightness: 2.5 bar water / -0.3 bar vacuum

Jetting Resistance: 120 bar

Corrosion Resistance: TOX®-Technology

Sealing Material: EPDM or Nitrile (NBR) rubber with lock in place profile according to DIN EN 681-1

Stainless Steel: AISI 304/1.4301, alternatively AISI 316/1.4404 according to DIN EN 10088-2

Temperature Resistance: -40°C to +120°C, temporary max. temperature +160°C

Standard/Approval: DIN EN 681-1

PRODUCT RANGE 

STANDARD COUPLING CANADA PLUS, TYPE 2B FOR ALL PIPE MATERIALS						
Article Number	Reference	A Size Range (mm)	L Length (mm)	resistant to (bar)	Nm	Weight (kg)
74000050	Canada Plus MSC 50	42-50	64	2,5	6	0,1
74000065	Canada Plus MSC 65	55-65	85	2,5	6	0,3
74000075	Canada Plus MSC 75	65-75	90	2,5	6	0,3
74000089	Canada Plus MSC 89	75-89	90	2,5	6	0,4
74000095	Canada Plus MSC 95	85-95	90	2,5	6	0,5
74000100	Canada Plus MSC 100	85-100	100	2,5	6	0,5
79000115	Canada Plus MSC 115	100-115	120	2,5	6	0,8
79000120	Canada Plus MSC 120	105-120	120	2,5	6	0,9
79000125	Canada Plus MSC 125	110-125	120	2,5	6	0,9
73100137	Canada Plus MSC 137	120-137	120	2,5	6	1,0
79000150	Canada Plus MSC 150	125-150	120	2,5	6	1,1
73125162	Canada Plus MSC 162	137-162	120	2,5	6	1,2
79000175	Canada Plus MSC 175	150-175	120	2,5	6	1,6
79000190	Canada Plus MSC 190	165-190	150	2,5	6	1,7
73150200	Canada Plus MSC 200	175-200	150	2,5	10	1,8
79000212	Canada Plus MSC 212	187-212	150	2,5	10	1,9
79000225	Canada Plus MSC 225	200-225	150	2,5	10	2,0
73200250	Canada Plus MSC 250	225-250	150	2,5	10	2,3
73200275	Canada Plus MSC 275	250-275	150	2,5	10	3,4
79000290	Canada Plus MSC 290	265-290	150	2,5	13	3,5
73250310	Canada Plus MSC 310	285-310	190	2,5	13	3,7
79000320	Canada Plus MSC 320	290-320	190	2,5	13	3,8
73250335	Canada Plus MSC 335	310-335	190	2,5	13	3,9
79000350	Canada Plus MSC 350	325-350	190	2,5	13	4,0
73300360	Canada Plus MSC 360	335-360	190	2,5	13	4,3
73300385	Canada Plus MSC 385	355-385	190	2,5	13	4,5
79000410	Canada Plus MSC 410	385-410	190	2,5	13	4,7
73350430	Canada Plus MSC 430	400-430	190	2,5	13	4,9
79000445	Canada Plus MSC 445	415-445	190	2,5	13	5,1
79000465	Canada Plus MSC 465	435-465	190	2,5	13	5,2
73400495	Canada Plus MSC 495	465-495	190	2,5	13	5,4
73400510	Canada Plus MSC 510	480-510	190	2,5	13	5,5
79000525	Canada Plus MSC 525	495-525	190	2,5	13	5,7
79000545	Canada Plus MSC 545	515-545	190	2,5	13	5,9
79000560	Canada Plus MSC 560	530-560	190	2,5	13	6,1
79000570	Canada Plus MSC 570	540-570	190	2,5	13	6,3
73500600	Canada Plus MSC 600	570-600	190	2,5	13	6,4
73500620	Canada Plus MSC 620	590-620	190	2,5	20	7,2
79000635	Canada Plus MSC 635	620-635	190	1,0	20	7,4
79000650	Canada Plus MSC 650	635-650	190	1,0	20	7,5
79000665	Canada Plus MSC 665	650-665	190	1,0	20	7,7
79000680	Canada Plus MSC 680	665-680	190	1,0	20	7,8
79000695	Canada Plus MSC 695	680-695	190	1,0	20	7,9
73600700	Canada Plus MSC 700	670-700	190	1,0	20	8,0
79000710	Canada Plus MSC 710	695-710	190	1,0	20	8,2
79000725	Canada Plus MSC 725	710-725	190	1,0	20	8,3
73600735	Canada Plus MSC 735	705-735	190	1,0	20	8,3
79000740	Canada Plus MSC 740	725-740	190	1,0	20	8,5
79000755	Canada Plus MSC 755	740-755	190	1,0	20	8,7
79000770	Canada Plus MSC 770	755-770	190	1,0	20	8,8
79000785	Canada Plus MSC 785	770-785	190	1,0	20	9,0
79000800	Canada Plus MSC 800	785-800	190	1,0	20	9,1
79000805	Canada Plus MSC 805	775-805	190	1,0	20	9,2
79000815	Canada Plus MSC 815	800-815	190	1,0	20	9,3
79000830	Canada Plus MSC 830	815-830	190	1,0	20	9,5
79000845	Canada Plus MSC 845	830-845	190	1,0	20	9,6
73700850	Canada Plus MSC 850	820-850	190	1,0	20	9,7

PRODUCT RANGE 
STANDARD COUPLING CANADA PLUS, TYPE 2B FOR ALL PIPE MATERIALS

Article Number	Reference	A Size Range (mm)	L Length (mm)	resistant to (bar)	Nm	Weight (kg)
79000860	Canada Plus MSC 860	845-860	190	1,0	20	9,7
79000875	Canada Plus MSC 875	850-875	190	1,0	20	9,8
79000890	Canada Plus MSC 890	875-890	190	1,0	20	10,0
79000905	Canada Plus MSC 905	890-905	190	1,0	20	10,1
79000915	Canada Plus MSC 915	885-915	190	1,0	20	10,3
79000920	Canada Plus MSC 920	905-920	190	1,0	20	10,3
79000935	Canada Plus MSC 935	920-935	190	1,0	20	10,5
73800950	Canada Plus MSC 950	920-950	190	1,0	20	10,6
79000965	Canada Plus MSC 965	950-965	190	1,0	20	10,8
79000975	Canada Plus MSC 975	945-975	190	1,0	20	10,8
79000980	Canada Plus MSC 980	965-980	190	1,0	20	11,0
79000995	Canada Plus MSC 995	980-995	190	1,0	20	11,1
79001010	Canada Plus MSC 1010	995-1010	190	0,6	20	11,3
79001025	Canada Plus MSC 1025	1010-1025	190	0,6	20	11,5
79001040	Canada Plus MSC 1040	1025-1040	190	0,6	20	11,6
79001055	Canada Plus MSC 1055	1040-1055	190	0,6	20	11,8
79001070	Canada Plus MSC 1070	1055-1070	190	0,6	20	12,0
79001085	Canada Plus MSC 1085	1070-1085	190	0,6	20	12,1
79001100	Canada Plus MSC 1100	1085-1100	190	0,6	20	12,3
79001115	Canada Plus MSC 1115	1100-1115	190	0,6	20	12,5
79001130	Canada Plus MSC 1130	1115-1130	190	0,6	20	12,6
79001145	Canada Plus MSC 1145	1130-1145	190	0,6	20	12,8
79001160	Canada Plus MSC 1160	1145-1160	190	0,6	20	12,9
79001175	Canada Plus MSC 1175	1160-1175	190	0,6	20	13,1
79001190	Canada Plus MSC 1190	1175-1190	190	0,6	20	13,3
79001205	Canada Plus MSC 1205	1190-1205	190	0,6	25	13,4
79001220	Canada Plus MSC 1220	1205-1220	190	0,6	25	13,6
79001235	Canada Plus MSC 1235	1220-1235	190	0,6	25	13,8
79001250	Canada Plus MSC 1250	1235-1250	190	0,6	25	13,9
79001265	Canada Plus MSC 1265	1250-1265	190	0,6	25	14,1
79001280	Canada Plus MSC 1280	1265-1280	190	0,6	25	14,3
79001295	Canada Plus MSC 1295	1280-1295	190	0,6	25	14,4
79001310	Canada Plus MSC 1310	1295-1310	190	0,6	25	14,6
79001325	Canada Plus MSC 1325	1310-1325	190	0,6	25	14,8
79001340	Canada Plus MSC 1340	1325-1340	190	0,6	25	14,9
79001355	Canada Plus MSC 1355	1340-1355	190	0,6	25	15,1
79001370	Canada Plus MSC 1370	1355-1370	190	0,6	25	15,3
79001385	Canada Plus MSC 1385	1370-1385	190	0,6	25	15,4
79001400	Canada Plus MSC 1400	1385-1400	190	0,6	25	15,6
79001415	Canada Plus MSC 1415	1400-1415	190	-	25	15,8
79001430	Canada Plus MSC 1430	1415-1430	190	-	25	15,9
79001445	Canada Plus MSC 1445	1430-1445	190	-	25	16,1
79001460	Canada Plus MSC 1460	1445-1460	190	-	25	16,2
79001475	Canada Plus MSC 1475	1460-1475	190	-	25	16,4
79001490	Canada Plus MSC 1490	1475-1490	190	-	25	16,6
79001505	Canada Plus MSC 1505	1490-1505	190	-	25	16,7
79001520	Canada Plus MSC 1520	1505-1520	190	-	25	16,9
79001535	Canada Plus MSC 1535	1520-1535	190	-	25	17,1
79001550	Canada Plus MSC 1550	1535-1550	190	-	25	17,2
79001565	Canada Plus MSC 1565	1550-1565	190	-	25	17,4
79001580	Canada Plus MSC 1580	1565-1580	190	-	25	17,6
79001595	Canada Plus MSC 1595	1580-1595	190	-	25	17,7
79001610	Canada Plus MSC 1610	1595-1610	190	-	25	17,9
79001625	Canada Plus MSC 1625	1610-1625	190	-	25	18,1
79001640	Canada Plus MSC 1640	1625-1640	190	-	25	18,2
79001655	Canada Plus MSC 1655	1640-1655	190	-	25	18,4
79001670	Canada Plus MSC 1670	1655-1670	190	-	25	18,6

Larger sizes are available on request.



Coupling

BML-CONNECTOR

- + For bridge drainage
- + Reinforced clamps
- + AISI 316 stainless steel
- + Ozone resistant EPDM rubber

BML-Connector – for connecting bridge drainage pipes within same dimension

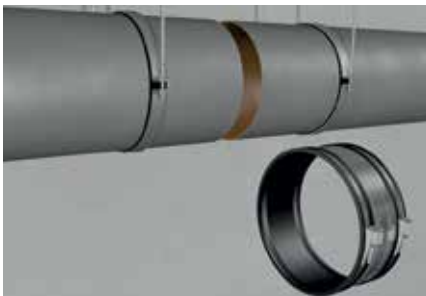
The BML-Connector is fitted with reinforced clamps. Linear expansion through temperature variation and vibrations of the bridge can be compensated.

An angular deflection of up to 3% allows installations for curved bridges, too. The ozone resistant EPDM rubber guarantees a durable tightening.

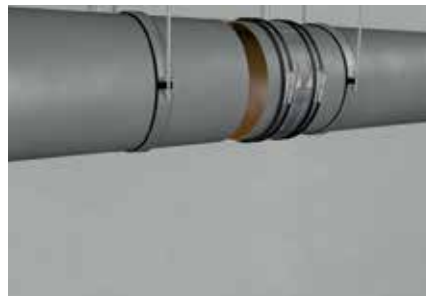
The BML-Connector can also be supplied in nitrile (NBR) rubber to offer resistance against oil and petrol. The used materials are resistant against road salt and exhaust fumes.



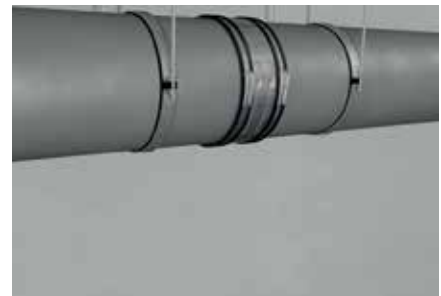
INSTALLATION



Position plain ended pipes.

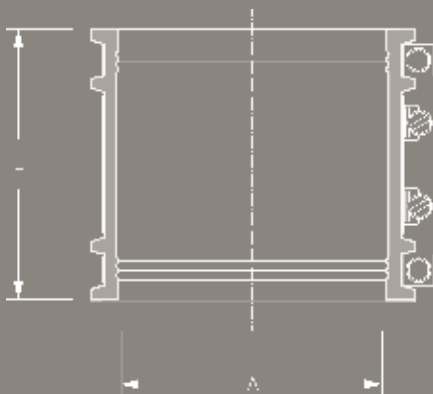


Slide coupling over one plain end.



Center coupling over joint. Tighten clamps and shear band reciprocally.

DESCRIPTION



TECHNICAL SPECIFICATION

BML-Connector for connecting bridge drainage pipes made from cast iron, GRP or stainless steel.

Pipe DN/Material _____
 Article Number _____
 Qty Price/Unit Total

Manufacturer: MÜCHER DICHTUNGEN®, D-50226 Frechen,
 T +49 2234 928 03-0, F-55

Pressure Tightness: 2.5 bar water / -0.3 bar vacuum

Jetting Resistance: 120 bar

Corrosion Resistance: TOX®-Technology

Sealing Material: EPDM or Nitrile (NBR) rubber with lock in place profile according to DIN EN 681-1

Stainless Steel: AISI 304/1.4301, alternatively AISI 316/1.4404 according to DIN EN 10088-2

Temperature Resistance: -40°C to +120°C, temporary max. temperature +160°C

Standard/Approval: DIN EN 681-1

PRODUCT RANGE 

BML-CONNECTOR, FOR BRIDGE DRAINAGE						
Article Number	Reference	A Size Range (mm)	L Length (mm)	resistant to (bar)	Nm	Weight (kg)
81000100	BML-Connector DN 100	100-115	120	2,5	20	0,8
81000125	BML-Connector DN 125	120-137	120	2,5	20	0,9
81000150	BML-Connector DN 150	137-162	120	2,5	20	1,1
81000200	BML-Connector DN 200	187-212	150	2,5	20	1,8
81000250	BML-Connector DN 250	250-275	150	2,5	20	2,3
81000300	BML-Connector DN 300	310-335	190	2,5	20	3,8
81000400	BML-Connector DN 400	400-430	190	2,5	20	6,1
81000500	BML-Connector DN 500	515-545	190	2,5	20	7,4
81000600	BML-Connector DN 600	620-645	190	2,5	20	8,8

Larger sizes are available on request.



Extra Wide Coupling

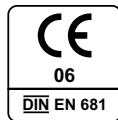
CANADA TITAN XL

- + For all pipe materials
- + For above and below ground
- + Extra wide profile
- + Resistant to 2.5 bar

Extra Wide Coupling Canada TITAN XL – for safe connecting of large diameter pipes

The Extra Wide Coupling Canada TITAN XL connects all plain ended pipes within same or different dimensions and is compensating differences in outside diameters of max. 12 mm. Larger differences will require the use of bushes.

The extra wide profile allows a safe and flexible laying of large diameter pipes from DN 800.



INSTALLATION



Position plain ended pipes.

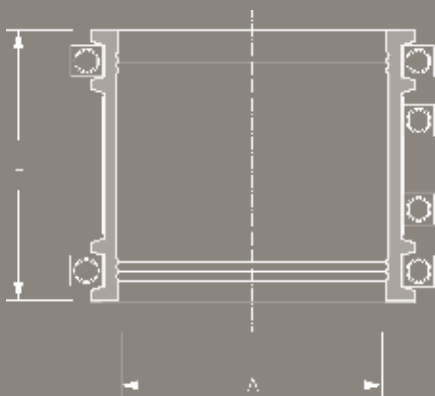


Slide coupling over one plain end.



Center coupling over joint. Tighten clamps and shear band reciprocally.

DESCRIPTION



TECHNICAL SPECIFICATION

Extra Wide Coupling Canada TITAN XL for connecting all plain ended pipe materials with different or same outside diameters for applications above and below ground. Differences in outside diameters of more than 12 mm will require the use of bushes.

Pipe 1 DN/Material _____
 Pipe 2 DN/Material _____
 Article Number _____
 _____ Qty _____ Price/Unit _____ Total

Manufacturer: MÜCHER DICHTUNGEN®, D-50226 Frechen,
 T +49 2234 928 03-0, F-55
 Pressure Tightness: 2.5 bar water / -0.3 bar vacuum
 Jetting Resistance: 120 bar
 Corrosion Resistance: TOX®-Technology
 Sealing Material: EPDM or Nitrile (NBR) rubber with lock in place profile according to DIN EN 681-1
 Stainless Steel: AISI 304/1.4301, alternatively AISI 316/1.4404 according to DIN EN 10088-2
 Temperature Resistance: -40°C to +120°C, temporary max. temperature +160°C
 Standard/Approval: DIN EN 681-1



PRODUCT RANGE

EXTRA WIDE COUPLING CANADA TITAN XL						
Article Number	Reference	A Size Range (mm)	L Length (mm)	resistant to (bar)	Nm	Weight (kg)
80000310	Canada Titan MXL 310	285-310	300	2,5	13	5,6
80000320	Canada Titan MXL 320	290-320	300	2,5	13	5,8
80000335	Canada Titan MXL 335	310-335	300	2,5	13	6,0
80000350	Canada Titan MXL 350	325-350	300	2,5	13	6,3
80000360	Canada Titan MXL 360	335-360	300	2,5	13	6,5
80000385	Canada Titan MXL 385	355-385	300	2,5	13	7,0
80000410	Canada Titan MXL 410	385-410	300	2,5	13	7,4
80000430	Canada Titan MXL 430	400-430	300	2,5	13	7,8
80000445	Canada Titan MXL 445	415-445	300	2,5	13	8,1
80000465	Canada Titan MXL 465	435-465	300	2,5	13	8,6
80000495	Canada Titan MXL 495	465-495	300	2,5	13	9,0
80000510	Canada Titan MXL 510	480-510	300	2,5	13	9,3
80000525	Canada Titan MXL 525	495-525	300	2,5	13	9,8
80000545	Canada Titan MXL 545	515-545	300	2,5	13	10,2
80000560	Canada Titan MXL 560	530-560	300	2,5	13	10,7
80000570	Canada Titan MXL 570	540-570	300	2,5	13	11,1
80000600	Canada Titan MXL 600	570-600	300	2,5	13	11,5
80000620	Canada Titan MXL 620	590-620	300	2,5	13	11,9
80000635	Canada Titan MXL 635	620-635	300	1,0	20	12,3
80000650	Canada Titan MXL 650	635-650	300	1,0	20	12,6
80000665	Canada Titan MXL 665	650-665	300	1,0	20	13,0
80000680	Canada Titan MXL 680	665-680	300	1,0	20	13,4
80000695	Canada Titan MXL 695	680-695	300	1,0	20	13,8
80000700	Canada Titan MXL 700	670-700	300	1,0	20	13,9
80000710	Canada Titan MXL 710	695-710	300	1,0	20	14,1
80000725	Canada Titan MXL 725	710-725	300	1,0	20	14,5
80000735	Canada Titan MXL 735	705-735	300	1,0	20	14,9
80000740	Canada Titan MXL 740	725-740	300	1,0	20	14,3
80000755	Canada Titan MXL 755	740-755	300	1,0	20	14,7
80000770	Canada Titan MXL 770	755-770	300	1,0	20	15,0
80000785	Canada Titan MXL 785	770-785	300	1,0	20	15,3
80000800	Canada Titan MXL 800	785-800	300	1,0	20	15,7
80000805	Canada Titan MXL 805	775-805	300	1,0	20	16,1
80000815	Canada Titan MXL 815	800-815	300	1,0	20	16,4
80000830	Canada Titan MXL 830	815-830	300	1,0	20	16,8
80000845	Canada Titan MXL 845	830-845	300	1,0	20	17,1
80000860	Canada Titan MXL 860	845-860	300	1,0	20	17,5
80000875	Canada Titan MXL 875	850-875	300	1,0	20	17,8
80000890	Canada Titan MXL 890	875-890	300	1,0	20	18,1
80000905	Canada Titan MXL 905	890-905	300	1,0	20	18,5
80000915	Canada Titan MXL 915	885-915	300	1,0	20	18,8
80000920	Canada Titan MXL 920	905-920	300	1,0	20	19,1
80000935	Canada Titan MXL 935	920-935	300	1,0	20	19,5
80000950	Canada Titan MXL 950	935-950	300	1,0	20	19,8
80000965	Canada Titan MXL 965	950-965	300	1,0	20	20,2
80000975	Canada Titan MXL 975	945-975	300	1,0	20	20,5
80000980	Canada Titan MXL 980	965-980	300	1,0	20	20,9
80000995	Canada Titan MXL 995	980-995	300	1,0	20	21,3
80001010	Canada Titan MXL 1010	995-1010	300	0,6	20	21,7
80001025	Canada Titan MXL 1025	1010-1025	300	0,6	20	22,1
80001040	Canada Titan MXL 1040	1025-1040	300	0,6	20	22,5
80001055	Canada Titan MXL 1055	1040-1055	300	0,6	20	22,8
80001070	Canada Titan MXL 1070	1055-1070	300	0,6	20	23,1
80001085	Canada Titan MXL 1085	1070-1085	300	0,6	20	23,4
80001100	Canada Titan MXL 1100	1085-1100	300	0,6	20	23,8
80001115	Canada Titan MXL 1115	1100-1115	300	0,6	20	24,1
80001130	Canada Titan MXL 1130	1115-1130	300	0,6	20	24,5

PRODUCT RANGE 
EXTRA WIDE COUPLING CANADA TITAN XL

Article Number	Reference	A Size Range (mm)	L Length (mm)	resistant to (bar)	Nm	Weight (kg)
80001145	Canada Titan MXL 1145	1130-1145	300	0,6	20	24,8
80001160	Canada Titan MXL 1160	1145-1160	300	0,6	20	25,1
80001175	Canada Titan MXL 1175	1160-1175	300	0,6	20	25,4
80001190	Canada Titan MXL 1190	1175-1190	300	0,6	20	25,7
80001205	Canada Titan MXL 1205	1190-1205	300	0,6	25	26,0
80001220	Canada Titan MXL 1220	1205-1220	300	0,6	25	26,4
80001235	Canada Titan MXL 1235	1220-1235	300	0,6	25	26,8
80001250	Canada Titan MXL 1250	1235-1250	300	0,6	25	27,1
80001265	Canada Titan MXL 1265	1250-1265	300	0,6	25	27,5
80001280	Canada Titan MXL 1280	1265-1280	300	0,6	25	27,8
80001295	Canada Titan MXL 1295	1280-1295	300	0,6	25	28,1
80001310	Canada Titan MXL 1310	1295-1310	300	0,6	25	28,4
80001325	Canada Titan MXL 1325	1310-1325	300	0,6	25	28,7
80001340	Canada Titan MXL 1340	1325-1340	300	0,6	25	29,2
80001355	Canada Titan MXL 1355	1340-1355	300	0,6	25	29,6
80001370	Canada Titan MXL 1370	1355-1370	300	0,6	25	30,0
80001385	Canada Titan MXL 1385	1370-1385	300	0,6	25	30,4
80001400	Canada Titan MXL 1400	1385-1400	300	0,6	25	30,8
80001415	Canada Titan MXL 1415	1400-1415	300	-	30	31,2
80001430	Canada Titan MXL 1430	1415-1430	300	-	30	31,6
80001445	Canada Titan MXL 1445	1430-1445	300	-	30	32,0
80001460	Canada Titan MXL 1460	1445-1460	300	-	30	32,4
80001475	Canada Titan MXL 1475	1460-1475	300	-	30	32,8
80001490	Canada Titan MXL 1490	1475-1490	300	-	30	33,2
80001505	Canada Titan MXL 1505	1490-1505	300	-	30	33,6
80001520	Canada Titan MXL 1520	1505-1520	300	-	30	34,0
80001535	Canada Titan MXL 1535	1520-1535	300	-	30	34,4
80001550	Canada Titan MXL 1550	1535-1550	300	-	30	34,8
80001565	Canada Titan MXL 1565	1550-1565	300	-	30	35,2
80001580	Canada Titan MXL 1580	1565-1580	300	-	30	35,6
80001595	Canada Titan MXL 1595	1580-1595	300	-	30	36,0
80001610	Canada Titan MXL 1610	1595-1610	300	-	30	36,4
80001625	Canada Titan MXL 1625	1610-1625	300	-	30	36,8
80001640	Canada Titan MXL 1640	1625-1640	300	-	30	37,2
80001655	Canada Titan MXL 1655	1640-1655	300	-	30	37,6
80001670	Canada Titan MXL 1670	1655-1670	300	-	30	38,0
80001685	Canada Titan MXL 1685	1670-1685	300	-	30	38,4
80001700	Canada Titan MXL 1700	1685-1700	300	-	30	38,8
80001715	Canada Titan MXL 1715	1700-1715	300	-	30	39,2
80001730	Canada Titan MXL 1730	1715-1730	300	-	30	39,6
80001745	Canada Titan MXL 1745	1730-1745	300	-	30	40,0
80001760	Canada Titan MXL 1760	1745-1760	300	-	30	40,4
80001775	Canada Titan MXL 1775	1760-1775	300	-	30	40,8
80001790	Canada Titan MXL 1790	1775-1790	300	-	30	41,2
80001805	Canada Titan MXL 1805	1790-1805	300	-	30	41,6
80001820	Canada Titan MXL 1820	1805-1820	300	-	30	42,0
80001835	Canada Titan MXL 1835	1820-1835	300	-	30	42,4
80001850	Canada Titan MXL 1850	1835-1850	300	-	30	42,8
80001865	Canada Titan MXL 1865	1850-1865	300	-	30	43,2
80001880	Canada Titan MXL 1880	1865-1880	300	-	30	43,6
80001895	Canada Titan MXL 1895	1880-1895	300	-	30	44,0
80001910	Canada Titan MXL 1910	1895-1910	300	-	30	44,4
80001925	Canada Titan MXL 1925	1910-1925	300	-	30	44,8
80001940	Canada Titan MXL 1940	1925-1940	300	-	30	45,2
80001955	Canada Titan MXL 1955	1940-1955	300	-	30	45,6
80001970	Canada Titan MXL 1970	1955-1970	300	-	30	46,0
80001985	Canada Titan MXL 1985	1970-1985	300	-	30	46,4

Larger sizes are available on request.





Coupling Kit

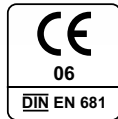
EASY-REP MER

- + For repair of damage or cracks
- + No stop of water flow
- + For above and below ground
- + Resistant to 0.5 bar

Coupling Kit EASY-REP – allows local repairs without stopping the water flow

EASY-REP is a rubber flexible repair coupling supplied in an easy to install kit form.

EASY-REP is designed to allow pipe repairs to be carried out to sewerage and drainage pipelines which have been subject to local damage or cracks, without the need to replace the section of pipe or even to stop the flow of water whilst carrying out the repair.



CIVILS

INSTALLATION



Coat rubber glue to the sleeve.

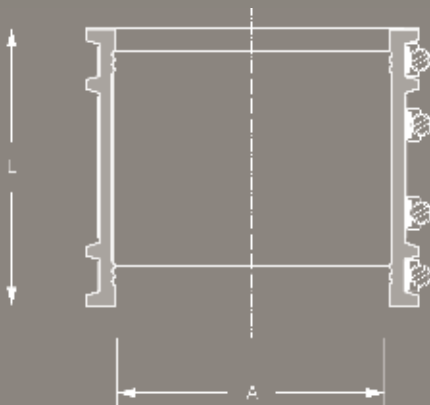


Tighten shear band reciprocally.



Tighten clamps.

DESCRIPTION



TECHNICAL SPECIFICATION

Coupling Kit EASY-REP for local repairs of damaged or cracked waste water pipes made from all materials. The outside diameter on the damaged pipe section needs to be taken on site.

Pipe DN/Material _____
 Article Number _____
 Qty Price/Unit Total

Manufacturer: MÜCHER DICHTUNGEN®, D-50226 Frechen, T +49 2234 928 03-0, F-55

Pressure Tightness: 0.5 bar water
 Corrosion Resistance: TOX®-Technology
 Sealing Material: EPDM rubber with lock in place profile according to DIN EN 681-1
 Stainless Steel: AISI 304/1.4301, alternatively AISI 316/1.4404 according to DIN EN 10088-2

Temperature Resistance: -40°C to +120°C, temporary max. temperature +160°C
 Standard/Approval: MPA Test Certificate No. 22 0008278



PRODUCT RANGE

COUPLING KIT EASY-REP MER						
Article Number	Reference	A Size Range (mm)	L Length (mm)	resistant to (bar)	Nm	Weight (kg)
83000310	EASY-REP MER 310	295-310	190	0,5	13	3,5
83000320	EASY-REP MER 320	305-320	190	0,5	13	3,7
83000330	EASY-REP MER 330	315-330	190	0,5	13	3,7
83000340	EASY-REP MER 340	325-340	190	0,5	13	3,9
83000350	EASY-REP MER 350	335-350	190	0,5	13	3,9
83000360	EASY-REP MER 360	345-360	190	0,5	13	4,0
83000370	EASY-REP MER 370	355-370	190	0,5	13	4,1
83000380	EASY-REP MER 380	365-380	190	0,5	13	4,2
83000390	EASY-REP MER 390	375-390	190	0,5	13	4,3
83000400	EASY-REP MER 400	385-400	190	0,5	13	4,4
83000410	EASY-REP MER 410	395-410	190	0,5	13	4,5
83000420	EASY-REP MER 420	405-420	190	0,5	13	4,6
83000430	EASY-REP MER 430	415-430	190	0,5	13	4,7
83000440	EASY-REP MER 440	425-440	190	0,5	13	4,8
83000450	EASY-REP MER 450	435-450	190	0,5	13	5,0
83000460	EASY-REP MER 460	445-460	190	0,5	13	5,0
83000470	EASY-REP MER 470	455-470	190	0,5	13	5,1
83000480	EASY-REP MER 480	465-480	190	0,5	13	5,1
83000490	EASY-REP MER 490	475-490	190	0,5	13	5,2
83000500	EASY-REP MER 500	485-500	190	0,5	13	5,3
83000510	EASY-REP MER 510	495-510	190	0,5	13	5,4
83000520	EASY-REP MER 520	505-520	190	0,5	13	5,5
83000530	EASY-REP MER 530	515-530	190	0,5	13	5,6
83000540	EASY-REP MER 540	525-540	190	0,5	13	5,7
83000550	EASY-REP MER 550	535-550	190	0,5	13	5,8
83000560	EASY-REP MER 560	545-560	190	0,5	13	5,9
83000570	EASY-REP MER 570	555-570	190	0,5	13	6,0
83000580	EASY-REP MER 580	565-580	190	0,5	13	6,1
83000590	EASY-REP MER 590	575-590	190	0,5	13	6,2
83000600	EASY-REP MER 600	585-600	190	0,5	13	6,3
83000610	EASY-REP MER 610	595-610	190	0,5	13	6,4
83000620	EASY-REP MER 620	605-620	190	0,5	13	6,5
83000630	EASY-REP MER 630	615-630	190	0,5	20	6,8
83000640	EASY-REP MER 640	625-640	190	0,5	20	7,2
83000650	EASY-REP MER 650	635-650	190	0,5	20	7,4
83000660	EASY-REP MER 660	645-660	190	0,5	20	7,5
83000670	EASY-REP MER 670	655-670	190	0,5	20	7,6
83000680	EASY-REP MER 680	665-680	190	0,5	20	7,7

Larger sizes are available on request.





Adaptor Coupling

MAC

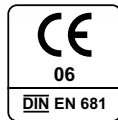
- + Adaptor for different outside diameters
- + For above and below ground
- + Reliable and durable solution
- + Resistant to 0.6 bar

Adaptor Coupling MAC - for the connection of all pipe systems with different outside diameters

The Adaptor Coupling MAC joints all plain ended pipes with different outside diameters and materials.

The Adaptor Coupling MAC can be used for applications above and below ground as well as inside and outside of buildings.

When changing nominal diameters, the flow direction needs consideration.



CIVILS

INSTALLATION



Position plain ended pipes.



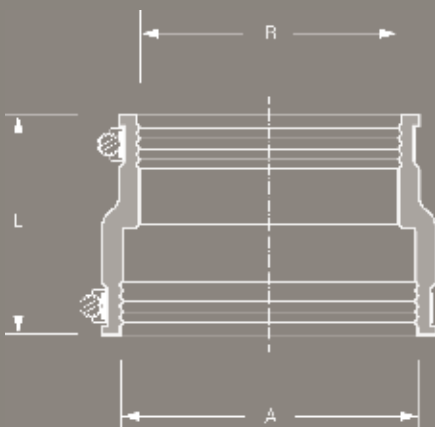
Slide adaptor coupling over one plain end.



Push other plain ended pipe into adaptor coupling and tighten clamps.

DESCRIPTION

TECHNICAL SPECIFICATION



Adaptor Coupling MAC for the connection of all plain ended pipe systems with different outside diameters for applications above and below ground as well as inside and outside of buildings.

Pipe 1 DN/Material _____
 Pipe 2 DN/Material _____

Article Number _____
 Qty Price/Unit Total

Manufacturer: MÜCHER DICHTUNGEN®, D-50226 Frechen,
 T +49 2234 928 03-0, F-55

Pressure Tightness: 0.6 bar water / -0.3 bar vacuum
 Jetting Resistance: 120 bar

Sealing Material: EPDM rubber with lock in place profile according to DIN EN 681-1
 Stainless Steel: AISI 304/1.4301, alternatively AISI 316/1.4404 according to DIN EN 10088-2

Temperature Resistance: -40°C to +120°C, temporary max. temperature +160°C
 Standard/Approval: DIN EN 295-4

PRODUCT RANGE 

ADAPTOR COUPLING MAC							
Article Number	Reference	A Size Range (mm)	B Size Range (mm)	L Length (mm)	resistant to (bar)	Nm	Weight (kg)
76000401	MAC 0401	32 - 40	24 - 32	64	0,6	3	0,1
76000501	MAC 0501	40 - 50	24 - 32	65	0,6	3	0,1
76000502	MAC 0502	40 - 50	32 - 40	64	0,6	3	0,1
76000632	MAC 0632	53 - 63	32 - 40	56	0,6	3	0,1
76000633	MAC 0633	53 - 63	40 - 50	85	0,6	3	0,2
76000893	MAC 0893	75 - 89	40 - 50	95	0,6	3	0,4
76000894	MAC 0894	75 - 89	53 - 63	95	0,6	3	0,3
76000853	MAC 1153	100 - 115	40 - 50	95	0,6	3	0,5
76001154	MAC 1154	100 - 115	53 - 63	95	0,6	3	0,3
76001155	MAC 1155	100 - 115	75 - 89	95	0,6	3	0,5
76001251	MAC 1251	110 - 125	80 - 95	120	0,6	6	0,6
76001252	MAC 1252	110 - 125	100 - 115	120	0,6	6	0,6
76001360	MAC 1360	121 - 136	75 - 89	100	0,6	6	0,6
76001361	MAC 1361	121 - 136	80 - 95	120	0,6	6	0,7
76001362	MAC 1362	121 - 136	100 - 115	102	0,6	6	0,6
76001363	MAC 1363	121 - 136	110 - 125	120	0,6	6	0,6
76001451	MAC 1451	130 - 145	95 - 110	100	0,6	6	0,5
76001452	MAC 1452	130 - 145	110 - 125	120	0,6	6	0,7
76001501	MAC 1501	135 - 150	100 - 115	120	0,6	6	0,5
76001602	MAC 1602	144 - 160	110 - 125	120	0,6	6	0,8
76001603	MAC 1603	144 - 160	121 - 136	120	0,6	6	0,8
76001701	MAC 1701	155 - 170	100 - 115	120	0,6	6	1,0
76001702	MAC 1702	155 - 170	110 - 125	120	0,6	6	0,8
76001703	MAC 1703	155 - 170	130 - 145	120	0,6	6	0,8
76001801	MAC 1801	160 - 180	100 - 115	150	0,6	6	1,0
76001802	MAC 1802	160 - 180	110 - 125	150	0,6	6	1,1
76001805	MAC 1805	160 - 180	155 - 170	150	0,6	6	1,3
76001922	MAC 1922	170 - 192	110 - 125	120	0,6	6	0,9
76001923	MAC 1923	170 - 192	121 - 136	120	0,6	6	0,9
76001924	MAC 1924	170 - 192	144 - 160	120	0,6	6	0,9
76001991	MAC 1991	180 - 200	100 - 115	155	0,6	6	1,2
76001993	MAC 1993	180 - 200	121 - 136	150	0,6	6	1,2
76002000	MAC 2000	180 - 200	130 - 145	150	0,6	6	1,4
76002001	MAC 2001	180 - 200	155 - 170	150	0,6	6	1,3
76002002	MAC 2002 / MAC 6000	180 - 200	160 - 180	150	0,6	6	1,3
76002102	MAC 2102	185 - 210	110 - 125	150	0,6	6	1,3
76002104	MAC 2104	185 - 210	130 - 145	150	0,6	6	1,3
76002105	MAC 2105	185 - 210	144 - 160	150	0,6	6	1,2
76002152	MAC 2152 offset	200 - 215	100 - 115	150	0,6	6	1,0
76002203	MAC 2203	195 - 220	155 - 170	150	0,6	6	1,2
76002303	MAC 2303	205 - 230	130 - 145	165	0,6	6	1,8
76002352	MAC 2352	210 - 235	110 - 125	150	0,6	6	1,5
76002353	MAC 2353	210 - 235	121 - 136	150	0,6	6	1,5
76002354	MAC 2354	210 - 235	144 - 160	150	0,6	6	1,5
76002355	MAC 2355	210 - 235	170 - 192	150	0,6	6	1,5
76002356	MAC 2356	210 - 235	190 - 215	150	0,6	6	1,5
76002505	MAC 2505	225 - 250	155 - 170	150	0,6	6	1,4
76002507	MAC 2507	225 - 250	195 - 220	150	0,6	6	1,5
76002508	MAC 2508	225 - 250	205 - 230	152	0,6	6	1,6
76002654	MAC 2654	240 - 265	144 - 160	150	0,6	6	1,8
76002655	MAC 2655	240 - 265	170 - 192	150	0,6	6	1,7
76002656	MAC 2656	240 - 265	190 - 215	150	0,6	6	1,7
76002657	MAC 2657	240 - 265	210 - 235	150	0,6	6	1,7
76002753	MAC 2753	250 - 275	155 - 170	165	0,6	6	2,1
76002755	MAC 2755	250 - 275	195 - 220	165	0,6	6	2,3
76002904	MAC 2904	265 - 290	144 - 160	145	0,6	6	2,0

PRODUCT RANGE 
ADAPTOR COUPLING MAC

Article Number	Reference	A Size Range (mm)	B Size Range (mm)	L Length (mm)	resistant to (bar)	Nm	Weight (kg)
76002905	MAC 2905	265 - 290	170 - 192	150	0,6	6	1,8
76002906	MAC 2906	265 - 290	190 - 215	149	0,6	6	2,0
76002907	MAC 2907	265 - 290	210 - 235	150	0,6	6	2,0
76002908	MAC 2908	265 - 290	240 - 265	149	0,6	6	1,9
76003003	MAC 3003 offset	275 - 300	180 - 200	150	0,6	6	1,4
76003157	MAC 3157	290 - 315	245 - 270	150	0,6	6	2,0
76003158	MAC 3158	290 - 315	260 - 285	165	0,6	6	2,1
76003204	MAC 3204	295 - 320	144 - 160	150	0,6	6	2,7
76003205	MAC 3205	295 - 320	170 - 192	150	0,6	6	2,6
76003206	MAC 3206	295 - 320	190 - 215	150	0,6	6	2,1
76003207	MAC 3207	295 - 320	210 - 235	150	0,6	6	2,5
76003208	MAC 3208	295 - 320	240 - 265	150	0,6	6	2,6
76003209	MAC 3209	295 - 320	265 - 290	150	0,6	6	2,5
76003257	MAC 3257	300 - 325	250 - 275	165	0,6	6	2,7
76003307	MAC 3307	305 - 330	245 - 270	150	0,6	6	1,7
76003351	MAC 3351 offset	310 - 335	180 - 205	151	0,6	6	2,2
76003357	MAC 3357	310 - 335	295 - 320	150	0,6	6	1,8
76003600	MAC 3600	335 - 360	295 - 320	167	0,6	6	3,1
76003606	MAC 3606	335 - 360	190 - 215	167	0,6	6	3,1
76003607	MAC 3607	335 - 360	210 - 235	165	0,6	6	3,0
76003608	MAC 3608	335 - 360	240 - 260	165	0,6	6	3,2
76003609	MAC 3609	335 - 360	265 - 290	165	0,6	6	3,1
76003708	MAC 3708	345 - 370	300 - 325	152	0,6	6	2,6
76003709	MAC 3709	345 - 370	310 - 335	165	0,6	6	2,5
76003850	MAC 3850	360 - 385	300 - 325	165	0,6	6	3,0
76004608	MAC 4608	435 - 460	360 - 385	180	0,6	6	2,6
76005150	MAC 5150	490 - 510	385 - 410	165	0,6	6	3,8





Drain Coupling

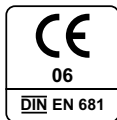
MDC

- + Coupling for same outside diameters
- + For above and below ground
- + Reliable and durable solution
- + Resistant to 0.6 bar

Drain Coupling MDC - for the connection of all pipe systems with same outside diameters

The Drain Coupling MDC connects all plain ended pipes with same outside diameters and materials.

The Drain Coupling MDC can be used for applications above and below ground as well as inside and outside of buildings.



CIVILS

INSTALLATION



Position plain ended pipes.



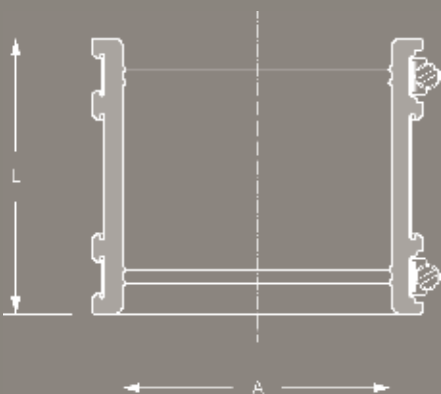
Slide coupling over one plain end.



Center coupling over joint. Tighten clamps.

DESCRIPTION

TECHNICAL SPECIFICATION



Drain Coupling MDC for the connection of all plain ended pipe systems with same outside diameters for applications above and below ground as well as inside and outside of buildings.

Pipe 1	DN/Material	_____
Pipe 2	DN/Material	_____
Article Number		_____
	Qty	Price/Unit Total

Manufacturer:	MÜCHER DICHTUNGEN®, D-50226 Frechen, T +49 2234 928 03-0, F-55
Pressure Tightness:	0.6 bar water / -0.3 bar vacuum
Jetting Resistance:	120 bar
Sealing Material:	EPDM or Nitrile (NBR) rubber with lock in place profile according to DIN EN 681-1
Stainless Steel:	AISI 304/1.4301, alternatively AISI 316/1.4404 according to DIN EN 10088-2
Temperature Resistance:	-40°C to +120°C, temporary max. temperature +160°C
Standard/Approval:	DIN EN 295-4

PRODUCT RANGE 

DRAIN COUPLING MDC						
Article Number	Reference	A Size Range (mm)	L Length (mm)	resistant to (bar)	Nm	Weight (kg)
76381190	MDC 32	24 - 32	64	0,6	6	0,1
76381195	MDC 40	32 - 40	64	0,6	6	0,1
76381200	MDC 50	42 - 50	64	0,6	6	0,1
76381205	MDC 56	50 - 56	70	0,6	6	0,1
76381947	MDC 65	55 - 65	85	0,6	6	0,2
76381952	MDC 75	65 - 75	90	0,6	6	0,3
76303021	MDC 89	75 - 89	90	0,6	6	0,4
76381970	MDC 95	85 - 95	90	0,6	6	0,4
76381955	MDC 100	85 - 100	100	0,6	6	0,4
76481958	MDC 115	100 - 115	120	0,6	6	0,4
76481959	MDC 120	105 - 120	106	0,6	6	0,4
76481125	MDC 125	110 - 125	120	0,6	6	0,4
76481960	MDC 137	120 - 137	120	0,6	6	0,4
76481961	MDC 150	125 - 150	120	0,6	6	0,5
76481962	MDC 162	137 - 162	120	0,6	6	0,5
76125165	MDC 165	150 - 165	105	0,6	6	0,5
76481964	MDC 175	150 - 175	120	0,6	6	0,6
76481966	MDC 190	165 - 190	150	0,6	6	0,6
76481978	MDC 200	175 - 200	150	0,6	6	0,6
76481980	MDC 212	187 - 212	150	0,6	6	0,6
76481982	MDC 225	200 - 225	150	0,6	6	0,7
76481983	MDC 250	225 - 250	150	0,6	6	0,7
76481984	MDC 275	250 - 275	150	0,6	6	0,8
76481290	MDC 290	265 - 290	150	0,6	6	0,9

Larger sizes are available on request.



Push-In Adaptor

MSA

- + For different materials
- + Internal seal
- + Resistant to 0.5 bar

Push-In Adaptor - for the internal connection of pipe systems with different dimensions and materials

The single Pipe Connector joints pipe systems with different dimensions and materials and can be used for flush-mounting and non-buried pipe connections.

The Push-In Adaptor is made from a durable EPDM rubber and has a noise reducing impact on downpipes.

Deutsches Institut für Bautechnik



CIVILS

INSTALLATION



Position pipe ends.

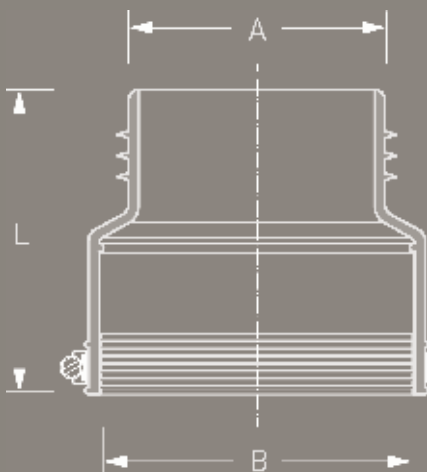


Insert Single Pipe Connector into larger pipe. Apply lubricant to plain ended pipe.



Insert smaller pipe into Single Pipe Connector.

DESCRIPTION



TECHNICAL SPECIFICATION

Push-In Adaptor for the internal connection of pipe systems with different dimensions and materials.

Pipe 1	DN/Material	_____
Pipe 2	DN/Material	_____
Article Number		_____
	Qty	Price/Unit Total

Manufacturer:	MÜCHER DICHTUNGEN®, D-50226 Frechen, T +49 2234 928 03-0, F-55
Pressure Tightness:	0.6 bar water / -0.3 bar vacuum
Jetting Resistance:	120 bar
Sealing Material:	EEPDM rubber according to DIN EN 681-1
Temperature Resistance:	-40°C to +120°C, temporary max. temperature +160°C
Standard/Approval:	DIN EN 681-1

PRODUCT RANGE 

PUSH-IN ADAPTOR MSA							
Article Number	Reference	A Size Range (mm)	B Size Range (mm)	L Length (mm)	resistant to (bar)	Nm	Weight (kg)
78000075	MSA 75	69 - 75	73 - 85	100	0,5	6	0,20
78000100	MSA 100	100 - 105	100 - 116	116	0,5	6	0,30
78000125	MSA 125	117 - 125	120 - 141	125	0,5	6	0,50
78000150	MSA 150	145 - 157	150 - 168	165	0,5	6	0,80



ROLL-RING MRR

- + Connection to sockets without seal
- + Socket connection remains
- + Reliable and durable solution
- + Resistant to 0.5 bar

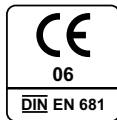
Roll-Ring – for the connection of spigots from all pipe materials to sockets without seal

The Roll-Ring connects spigots from all materials to sockets without seal (e.g. clay or concrete).

By using the Roll-Ring there is no need for cutting off the socket and connecting with a flexible coupling.

The Roll-Ring is individually produced to the customer's requirements, to provide the right compression for effective sealing.

DIN 4060



INSTALLATION



Do not use lubricant.

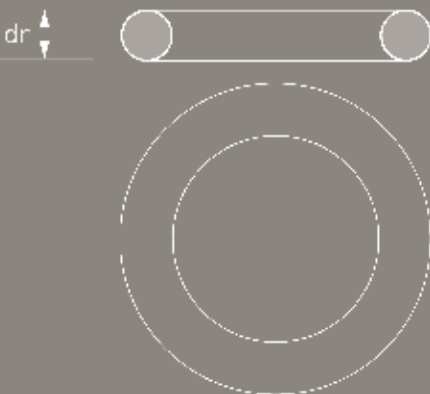


Position Roll-Ring in front of socket.



Push spigot into socket.

DESCRIPTION



TECHNICAL SPECIFICATION

Roll-Ring for the connection of spigots from all pipe materials to sockets without seal.

Pipe 1 DN/Material _____
 Socket Internal Ø (mm) _____
 Pipe 2 DN/Material _____
 External Ø (mm) _____

Article Number _____
 _____ Qty _____ Price/Unit _____ Total

Manufacturer: MÜCHER DICHTUNGEN®, D-50226 Frechen,
 T +49 2234 928 03-0, F-55

Pressure Tightness: 0.5 bar water / -0.3 bar vacuum
 Sealing Material: SBR rubber according to DIN EN 681-1
 Temperature Resistance: -40°C to +80°, temporary max. temperature +130°C
 Standard/Approval: DIN EN 681-1



PRODUCT RANGE 

ROLL-RING MRR								
Article Number	Reference	DN	Internal-Socket Ø (mm)	Outside-Ø (mm)	Pipe Material Spigot	dr String Strength (mm)	resistant to (bar)	Weight (kg)
3010016	Rollring MRR Clay DN 100 16 mm	100	150-160	131	Clay	16	0,5	0,1
3010018	Rollring MRR Clay DN 100 18 mm	100	151-161	131	Clay	18	0,5	0,1
3010020	Rollring MRR Clay DN 100 20 mm	100	152-162	131	Clay	20	0,5	0,1
3010022	Rollring MRR Clay DN 100 22 mm	100	153-163	131	Clay	22	0,5	0,1
5010032	Rollring MRR SML/PVC DN 100 32 mm	100	156-162	110	SML/PVC	32	0,5	0,3
3012518	Rollring MRR Clay DN 125 18 mm	125	178-190	159	Clay	18	0,5	0,1
3012520	Rollring MRR Clay DN 125 20 mm	125	179-191	159	Clay	20	0,5	0,1
3012522	Rollring MRR Clay DN 125 22 mm	125	180-192	159	Clay	22	0,5	0,1
3012524	Rollring MRR Clay DN 125 24 mm	125	181-193	159	Clay	24	0,5	0,2
5012534	Rollring MRR SML DN 125 34 mm	125	184-190	135	SML	34	0,5	0,3
5012543	Rollring MRR PVC DN 125 43 mm	125	184-190	125	PVC	43	0,5	0,5
3015020	Rollring MRR Clay DN 150 20 mm	150	207-219	186	Clay	20	0,5	0,1
3015022	Rollring MRR Clay DN 150 22 mm	150	208-220	186	Clay	22	0,5	0,2
3015024	Rollring MRR Clay DN 150 24 mm	150	209-221	186	Clay	24	0,5	0,2
3015026	Rollring MRR Clay DN 150 26 mm	150	210-222	186	Clay	26	0,5	0,3
5015034	Rollring MRR FC DN 150 34 mm	150	214-222	176	Fibre Cement	34	0,5	0,4
5015038	Rollring MRR SML/PVC DN 150 40 mm	150	215-223	160	SML/PVC	38	0,5	0,5
3020022	Rollring MRR Clay DN 200 22 mm	200	265-279	242	Clay	22	0,5	0,2
3020024	Rollring MRR Clay DN 200 24 mm	200	266-280	242	Clay	24	0,5	0,3
3020026	Rollring MRR Clay DN 200 26 mm	200	267-281	242	Clay	26	0,5	0,3
5020046	Rollring MRR SML DN 200 46 mm	200	275-283	210	SML	46	0,5	1,1
3025026	Rollring MRR Clay DN 250 26 mm	250	324-334	299	Clay	26	0,5	0,4
3025028	Rollring MRR Clay DN 250 28 mm	250	325-335	299	Clay	28	0,5	0,4
3030028	Rollring MRR Clay DN 300 28 mm	300	380-390	355	Clay	28	0,5	0,5
3030030	Rollring MRR Clay DN 300 30 mm	300	381-391	355	Clay	30	0,5	0,6
3030032	Rollring MRR Clay DN 300 32 mm	300	382-392	355	Clay	32	0,5	0,6

Further sizes are available on request. Roll-Rings are available in string strengths 10-51 mm.

P-RING



- + Replacement of clay pipe spigot seal
- + For use of shortened clay pipes
- + Joint system C
- + Resistant to 0.6 bar

P-Ring - for the replacement of the clay pipe spigot seal for shortened clay pipes

The P-Ring connects shortened clay pipes with clay sockets (joint system C according to DIN EN 295). P-Rings are available for both normal and high strength purposes.

The internal steel ring assures the ideal positioning of the P-Ring when pushing pipes together.



INSTALLATION



Install P-Ring on spigot.

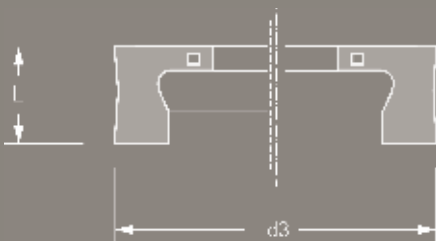


Apply lubricant to socket and P-Ring.



Push pipes together.

DESCRIPTION



TECHNICAL SPECIFICATION

P-Ring with internal steel ring for the connection of shortened clay pipe according to joint system C, DIN EN 295.

Clay Pipe DN/Strength _____

Article Number _____
 Qty Price/Unit Total

Manufacturer: MÜCHER DICHTUNGEN®, D-50226 Frechen,
 T +49 2234 928 03-0, F-55

Pressure Tightness: 0.6 bar water / -0.3 bar vacuum

Sealing Material: EPDM rubber according to DIN EN 681-1

Temperature Resistance: -40°C to +120°C, temporary max. temperature +160°C

Standard/Approval: DIN EN 295-4

PRODUCT RANGE 

P-RING					
Article Number	Reference	d3 Functional Area (mm)	L Length (mm)	resistant to (bar)	Weight (kg)
24720060	P-Ring DN 200 N	238 - 244	31	0,6	0,4
24720070	P-Ring DN 200 H	249 - 256	31	0,6	0,6
24725060	P-Ring DN 250 N	295 - 302	31	0,6	0,6
24725070	P-Ring DN 250 H	312 - 319	31	0,6	0,7
24730060	P-Ring DN 300 N	350 - 357	31	0,6	0,6
24730070	P-Ring DN 300 H	373 - 381	31	0,6	1,0
24740060	P-Ring DN 400 N	481 - 490	31	0,6	1,2
24740070	P-Ring DN 400 H	484 - 493	31	0,6	1,4
24750060	P-Ring DN 500 N	577 - 587	31	0,6	1,3
24750070	P-Ring DN 500 H	600 - 610	31	0,6	2,0
24760060	P-Ring DN 600 N	679 - 693	31	0,6	1,8
24760070	P-Ring DN 600 H	713 - 728	31	0,6	2,5



Ü-P-RING

- + Connection of thin walled pipes to clay sockets
- + Socket connection remains
- + Joint system C
- + Resistant to 0.6 bar

Ü-P-Ring - for the connection of spigots made from plastic, ductile or cast iron to clay sockets

The Ü-P-Ring connects thin walled pipes with clay sockets (joint system C according to DIN EN 295).

The internal steel ring assures the ideal positioning of the Ü-P-Ring when pushing pipes together.



INSTALLATION



Install Ü-P-Ring on spigot.

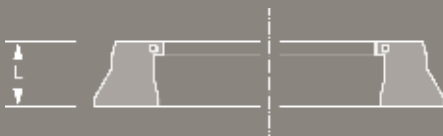


Apply lubricant to socket and Ü-P-Ring.



Push pipes together.

DESCRIPTION



TECHNICAL SPECIFICATION

Ü-P-Ring with internal steel ring for the connection of thin walled pipes (plastic, cast iron, GRP) to clay sockets according to joint system C, DIN EN 295.

Clay Pipe _____ DN/Strength _____
 Connecting Pipe _____ DN/Material _____

Article Number _____
 _____ Qty _____ Price/Unit _____ Total

Manufacturer: MÜCHER DICHTUNGEN®, D-50226 Frechen,
 T +49 2234 928 03-0, F-55

Pressure Tightness: 0.6 bar water / -0.3 bar vacuum
 Sealing Material: EPDM rubber according to DIN EN 681-1

Temperature Resistance: -40°C to +120°C, temporary max. temperature +160°C
 Standard/Approval: DIN EN 295-4

**PRODUCT RANGE**

Ü-P-RING						
Article Number	Reference	Outside Ø Spigot (mm)	d4 Internal Socket-Ø (mm)	L Length (mm)	resistant to (bar)	Weight (kg)
22502100	Ü-P-Ring Clay DN 200 N / SML	200	260,0	33	0,6	0,8
22502220	Ü-P-Ring Clay DN 200 N / GGG-FZ	222	260,0	33	0,6	0,7
22502500	Ü-P-Ring Clay DN 250 N / KG	250	317,5	33	0,6	1,3
22502740	Ü-P-Ring Clay DN 250 N / SML	274	317,5	33	0,6	0,8
22502740	Ü-P-Ring Clay DN 250 N / SML	274	317,5	33	0,6	0,8



M-P-RING

- + Changing from normal to high strength
- + Connection of clay spigot to clay socket
- + Joint system C
- + Resistant to 0.6 bar

M-P-Ring DN 200 - for the connection of clay spigots with normal strength to clay sockets with high strength
 The M-P-Ring DN 200 connects clay spigots with normal strength with seal (socket K or S-Ring) to sockets with high strength (socket K or S).

The change from normal to high strength can be done on the clay pipe run or when connecting to concrete manholes (extra strength BKK, extra strength GM-fitting).



INSTALLATION



Insert M-P-Ring into clay socket.

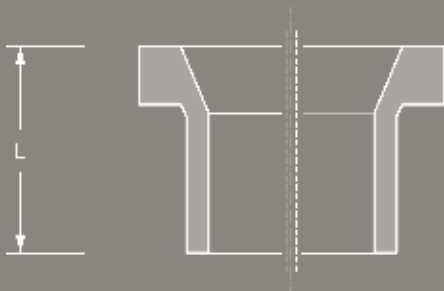


Apply lubricant to socket and M-P-Ring.



Push spigot into socket.

DESCRIPTION



TECHNICAL SPECIFICATION

M-P-Ring DN 200 for changing from normal to high strength on the pipe run or when connecting to concrete manholes from clay spigots with normal strength to sockets with high strength (socket K or S) according to joint system C, DIN EN 295.

Article Number _____

___ Qty ___ Price/Unit ___ Total

Manufacturer:

MÜCHER DICHTUNGEN®, D-50226 Frechen,
T +49 2234 928 03-0, F-55

Pressure Tightness:

0.6 bar water / -0.3 bar vacuum

Sealing Material:

EPDM rubber according to DIN EN 681-1

Temperature Resistance:

-40°C to +120°C, temporary max. temperature +160°C

Standard/Approval:

DIN EN 295-4, MPA Test Certificate No. 22 8076499-01-2



PRODUCT RANGE 

M-P-RING						
Article Number	Reference	Clay Spigot (mm)	Clay Socket	L Length (mm)	resistant to (bar)	Weight (kg)
22602000	M-P-Ring DN 200 N/H	DN 200 N	DN 200 H	72	0,6	0,9

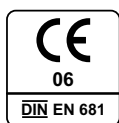


Ü-RING

- + Connecting thin walled pipes to clay sockets
- + Socket connection remains
- + Joint system F
- + Resistant to 0.6 bar

Ü-Ring - for the connection of spigots made from plastic, ductile or cast iron to clay sockets

The Ü-Ring DN 200 connects clay thin walled pipes (plastic ductile or cast iron) to clay sockets (joint system F, DIN EN 295).



INSTALLATION



Install Ü-Ring on spigot.



Apply lubricant to socket and Ü-Ring.



Push spigot into socket.

DESCRIPTION



TECHNICAL SPECIFICATION

Ü-Ring for the connection of thin walled pipes (plastic, cast iron, GRP) to clay sockets according to joint system F, DIN EN 295.

Clay Pipe DN _____
 Connecting Pipe DN/Material _____

Article Number _____
 ___ Qty ___ Price/Unit ___ Total

Manufacturer: MÜCHER DICHTUNGEN®, D-50226 Frechen,
 T +49 2234 928 03-0, F-55

Pressure Tightness: 0.6 bar water / -0.3 bar vacuum

Jetting Resistance: 120 bar

Sealing Material: EPDM rubber according to DIN EN 681-1

Temperature Resistance: -40°C to +120°C, temporary max. temperature +160°C

Standard/Approval: DIN EN 295-4

**PRODUCT RANGE**

Ü-RING						
Article Number	Reference	Outside Ø Spigot (mm)	Clay Pipe Lip-Seal	L Length (mm)	resistant to (bar)	Weight (kg)
20210012	Ü-Ring Clay DN 100 SML/KG	110	L-Seal	60	0,6	0,3
20212511	Ü-Ring Clay DN 125 KG	125	L-Seal	60	0,6	0,3
20212510	Ü-Ring Clay DN 125 SML	135	L-Seal	60	0,6	0,4
20215012	Ü-Ring Clay DN 150 SML/KG	160	L-Seal	60	0,6	0,6
20215013	Ü-Ring Clay DN 150 GGG/FZ	170	L-Seal	60	0,6	0,3
20220020	Ü-Ring Clay DN 200 KG	200	L-Seal	68	0,6	0,9
20220010	Ü-Ring Clay DN 200 SML	210	L-Seal	68	0,6	0,9



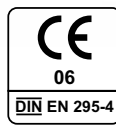
A-RING

- + Connecting to sockets without seal
- + Clay to socket (cast iron, plastic)
- + Joint system F
- + Resistant to 0.6 bar

A-Ring - for the connection of clay spigots to sockets without seal made from other pipe materials

The A-Ring connects clay spigots (joint system F according to DIN EN 295) to cast iron or plastic sockets without seal.

The internal steel ring assures the ideal positioning of the A-Ring when pushing pipes together.



INSTALLATION



Insert A-Ring in socket.



Apply lubricant to A-Ring.



Push spigot into socket.

DESCRIPTION



TECHNICAL SPECIFICATION

A-Ring with internal steel ring for the connection of clay spigots according to joint system F, DIN EN 295 to sockets made from cast iron or plastic.

Socket DN/Material _____

Article Number _____
 ___ Qty ___ Price/Unit ___ Total

Manufacturer: MÜCHER DICHTUNGEN®, D-50226 Frechen,
 T +49 2234 928 03-0, F-55

Pressure Tightness: 0.6 bar water / -0.3 bar vacuum
 Jetting Resistance: 120 bar

Sealing Material: EPDM rubber according to DIN EN 681-1

Temperature Resistance: -40°C to +120°C, temporary max. temperature +160°C

Standard/Approval: DIN EN 295-4

**PRODUCT RANGE** 

A-RING						
Article Number	Reference	Outside Ø Spigot (mm)	Internal Socket Ø (mm)	L Length (mm)	resistant to (bar)	Weight (kg)
37010100	A-Ring DN 100	131	159 +/- 2,0	60	0,6	0,4
37010125	A-Ring DN 125	159	187 +/- 3,5	60	0,6	0,6
37010150	A-Ring DN 150	186	218 +/- 3,5	60	0,6	0,8
37010200	A-Ring DN 200	242	278 +/- 3,5	60	0,6	1,1



Joint for footed concrete pipes

MULTI-STEP

- + Connection of footed and circular pipes
- + For all pipe materials
- + Easy installation on site
- + Resistant to 0.5 bar

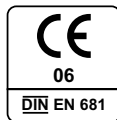
MULTI-STEP - internal joint for the connection of footed to circular pipes

MULTI-STEP connects footed concrete pipes with circular pipes from other materials. MULTI-STEP allows the punctual repair of footed concrete pipes within the operating sewer.

The MULTI-STEP joint consists of an EPDM elastomer with an internal steel body.

Circular pipes can be connected with footed concrete pipes as well as circular pipes among each other.

DIN 4060



INSTALLATION



Remove damaged pipe section.



Chamfer pipes and insert MULTI-STEP. Slide short pipe section over MULTI-STEP.



Insert new pipe section and joint with a standard coupling.

DESCRIPTION



TECHNICAL SPECIFICATION

Joint MUTLI-STEP for the connection of footed concrete pipes with circular pipes from other materials (e.g. clay, plastic, etc.).

Pipe 1 DN/Material _____
 Pipe 2 DN/Material _____

Article Number _____
 Qty Price/Unit Total

Manufacturer: MÜCHER DICHTUNGEN®, D-50226 Frechen,
 T +49 2234 928 03-0, F-55
 Pressure Tightness: 0.5 bar water / -0.3 bar vacuum
 Sealing Material: EPDM rubber with internal steel body according to DIN EN 681-1
 Temperature Resistance: -40°C to +120°C, temporary max. temperature +160°C
 Standard/Approval: DIN EN 681-1



PRODUCT RANGE 

JOINT FOR FOOTED CONCRETE PIPES MULTI-STEP					
Article Number	Reference	Internal Pipe Ø (mm)	L Length (mm)	resistant to (bar)	Weight (kg)
85100300	Multi-Step DN 300	298-302	135	0,5	2,8



Wedge-Shaped Seal

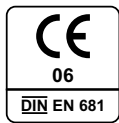
MKG

- + Seal for concrete manholes
- + Fixed seal
- + Caoutchouc elastomer according to DIN EN 681-1
- + Resistant to 0.5 bar

Wedge-Shaped Seal MKG - for the connection of manhole rings according to DIN 4034

The Wedge-Shaped Seal MKG is used for sealing concrete manholes. The seal is made from a caoutchouc elastomer with a dense structure. It is positioned on the spigot of the manhole shaft and is compressed between the manhole rings.

DIN 4060



INSTALLATION



Slide MKG seal over spigot.



Apply lubricant to MKG seal.



Push manhole rings together.

DESCRIPTION



TECHNICAL SPECIFICATION

Wedge-Shaped Seal MKG for concrete manholes according to DIN 4034. The connection requires testing according to DIN EN 1610.

DN _____

Article Number _____

___ Qty ___ Price/Unit ___ Total

Manufacturer: MÜCHER DICHTUNGEN®, D-50226 Frechen, T +49 2234 928 03-0, F-55

Pressure Tightness: 0.5 bar water

Sealing Material: SBR rubber according to DIN EN 681-1

Temperature Resistance: -40°C to +80°C, temporary max. temperature +130°C

Standard/Approval: DIN 4060, DIN 4034, DIN EN 1917

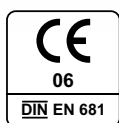


PRODUCT RANGE

WEDGE-SHAPED SEAL MKG FOR MANHOLES						
Article Number	Reference	dr Hight of Profile (mm)	Socket Gap min. (mm)	Socket Gap max. (mm)	resistant to (bar)	Weight (kg)
35303058	MKG DN 1000, 18 mm	18	8,4	12,6	0,5	0,9
35303060	MKG DN 1000, 20 mm	20	9,3	14,0	0,5	1,3
35360061	MKG DN 1200, 21 mm	21	9,8	14,7	0,5	1,8
35450065	MKG DN 1500, 25 mm	25	11,7	17,5	0,5	3,0

WEDGE-SHAPED SEAL MKG 30			
dr Hight of Profile (mm)	B Contact Surface (mm)	Socket Gap min. (mm)	Socket Gap max. (mm)
12	22	5,6	8,4
14	26	6,5	9,8
16	30	7,5	11,2
18	33	8,4	12,6
20	37	9,3	14,0
22	41	10,3	15,4
24	44	11,2	16,8
26	48	12,1	18,2
28	52	13,1	19,6
30	55	14,0	21,0
32	59	19,9	22,4

WEDGE-SHAPED SEAL MKG 40			
dr Hight of Profile (mm)	B Contact Surface (mm)	Socket Gap min. (mm)	Socket Gap max. (mm)
12	20	5,6	8,4
14	24	6,5	9,8
16	27	7,5	11,2
18	30	8,4	12,6
19	31	8,9	13,3
20	32	9,3	14,0
21	36	9,8	14,7
22	38	10,3	15,4
24	42	11,2	16,8
25	44	11,7	17,5
26	45	12,1	18,2
27	46	12,6	18,9
28	52	13,1	19,6
30	52	14,0	21,0
32	56	19,9	22,4



Jointing Element

BKL

- + Joint integrated in concrete manholes
- + Polystyrene supporting element
- + Joint system F
- + Resistant to 0.5 bar

BKL Jointing Element - for the connection of clay pipes to concrete manholes and road gullies

The BKL Jointing Element is integrated into concrete manholes or road gullies (socket L, joint system F) when manufactured.

To get the necessary space for installation, the BKL Jointing Element is installed together with a polystyrene supporting element.

INSTALLATION



Remove polystyrene from socket.

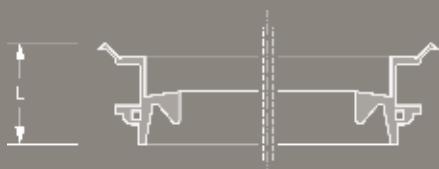


Apply lubricant to BKL joint.



Push pipe into socket.

DESCRIPTION



TECHNICAL SPECIFICATION

BKL Jointing Element including polystyrene supporting element according to DIN EN 295-4 for the connection of clay pipes (joint system F) to concrete manholes or road gullies according to DIN 4034 and DIN EN 1917.

DN _____

Article Number _____

___ Qty ___ Price/Unit ___ Total

Manufacturer: MÜCHER DICHTUNGEN®, D-50226 Frechen, T +49 2234 928 03-0, F-55

Pressure Tightness: 0.5 bar water

Sealing Material: EPDM rubber according to DIN EN 681-1

Temperature Resistance: -40°C to +120°C, temporary max. temperature +160°C

Standard/Approval: DIN EN 295-4



PRODUCT RANGE

BKL JOINTING ELEMENT				
Article Number	Reference	L Length (mm)	resistant to (bar)	Weight (kg)
36065150	BKL DN 150 incl. supporting element type 1	38	0,5	0,2
36065151	BKL DN 150 incl. supporting element type 2	38	0,5	0,2
36065200	BKL DN 200 incl. supporting element	38	0,5	0,3

Z-JOINT



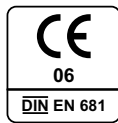
- + For Road Gullies (wet sludge trap)
- + Excellent damping behaviour
- + Protection of concrete gully
- + Resistant to 0.5 bar

Z-JOINT - for concrete road gullies

The Z-Joint DN 450 is used for concrete road gullies with a wet sludge trap according to DIN 4052.

The Z-Joint is positioned on the gully rings and is compressed between them.

A better damping behavior is achieved, hence resulting in a longer life cycle of the concrete road gully. The traffic loads can be absorbed more constantly.



INSTALLATION



Clean sealing surface.



Insert Z-joint.



Push gully rings together.

DESCRIPTION



TECHNICAL SPECIFICATION

Z-joint DN 450 for the connection of gully rings for concrete road gullies with a wet sludge trap according to DIN 4052.

Article Number _____

___ Qty ___ Price/Unit ___ Total

Manufacturer: MÜCHER DICHTUNGEN®, D-50226 Frechen, T +49 2234 928 03-0, F-55

Pressure Tightness: 0.5 bar water

Sealing Material: EPDM rubber according to DIN EN 681-1

Temperature Resistance: -40°C to +120°C, temporary max. temperature +160°C

Standard/Approval: DIN 4052



PRODUCT RANGE 

Z-JOINT FOR ROAD GULLIES				
Article Number	Reference	L Length (mm)	resistant to (bar)	Weight (kg)
12045030	Z-joint DN 450	36	0,5	1,0



Sewer Saddle

TWISTEE®

- + Connecting to thick walled main sewers from DN 300
- + Standard core drill size of 200 mm
- + Various lateral pipe materials to be jointed
- + Resistant to 0.6 bar

Sewer Saddle TWISTEE – for connecting lateral pipes to thick walled main sewers

As the Sewer Saddle TWISTEE DN 150 has been designed with a stub-out, it offers the possibility to connect to any DN 150 lateral pipe material.

The main sewer requires a minimum wall thickness of 30 mm.

Optionally the TWISTEE is supplied with a double socket coupler.

Deutsches Institut für Bautechnik



CIVILS

INSTALLATION



Drill hole. Using a drill stand is recommended.

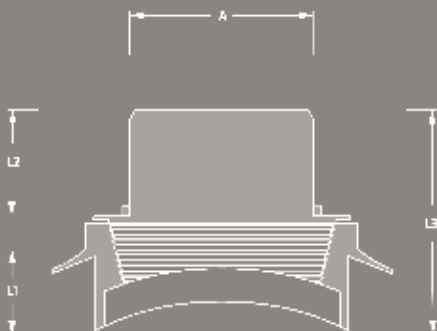


Insert TWISTEE gasket considering flow direction.



Twist TWISTEE stub-out into gasket and slide double socket coupler over.

DESCRIPTION



TECHNICAL SPECIFICATION

Sewer Saddle TWISTEE for connecting lateral pipes to thick walled main sewers.

Main Sewer	DN/Material	_____
Lateral Pipe	DN/Material	_____
Article Number	_____	_____
	___ Qty	___ Price/Unit ___ Total

Manufacturer:	MÜCHER DICHTUNGEN®, D-50226 Frechen, T +49 2234 928 03-0, F-55
Pressure Tightness:	0.6 bar water / -0.3 bar vacuum
Jetting Resistance:	170 bar
Sealing Material:	EPDM rubber according to DIN EN 681-1
Plastic Body:	PP according to DIN EN 14758-1
Temperature Resistance:	-40°C to +120°C, temporary max. temperature +160°C
Standard/Approval:	DIBt-Approval (Z-42.1-567), DIN EN 681-1



PRODUCT RANGE

SEWER-SADDLE TWISTEE®								
Article Number	Reference	A Outside-Ø (mm)	Wall thickness main sewer (mm)	Core Drill (mm)	L1 Length (mm)	L2 Length (mm)	resistant to (bar)	Weight (kg)
28202163	TWISTEE® DN 150	160	60-85	200 +/- 1,0	60	75	0,6	1,2
28202160	TWISTEE® KG DN 160 with coupling	160	60-85	200 +/- 1,0	60	75	0,6	2,1
28202161	TWISTEE® Clay. DN 150 with adaptor	160	60-85	200 +/- 1,0	60	75	0,6	2,2
28202162	TWISTEE® Twin Wall Plastic/GRP DN 150 with coupling	160	60-85	200 +/- 1,0	60	75	0,6	2,2
28702162	Installation Wrench	-	-	-	-	-	-	1,0

CONNECTING OPTIONS

TWISTEE® Plastic with coupling



Push the plastic coupling on to the TWISTEE® spigot and then connect the plastic pipe.

TWISTEE® Clay with adaptor



Place adaptor on to the TWISTEE® spigot and tighten the first clamp. Insert the clay pipe and tighten the second clamp.

TWISTEE® Twin Wall Plastic/GRP with coupling



Place coupling on to TWISTEE® spigot and tighten the first clamp. Place rubber ring in the second groove of the Twin Wall Plastic pipe. Then connect the pipe and tighten the second clamp.



Sewer Saddle

T-FLEX

- + For main sewers with smooth surface
- + For all sewer materials
- + Sealing against the outer sewer wall
- + Resistant to 0.5 bar

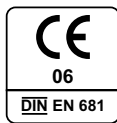
Sewer Saddle T-Flex - for connecting lateral pipes to existing sewers or drains

The seal of the Sewer Saddle T-Flex is formed by compression of the rubber apron against the outer sewer wall and connects laterals to existing sewers or drains with a smooth surface.

The size range of the Sewer Saddle T-Flex is designed to fit plain ended plastic pipes.

The tolerances of the Sewer Saddle T-Flex allow the use of standard core drills.

DIN 4060



INSTALLATION



Drill and clean hole 90° to pipe axis.

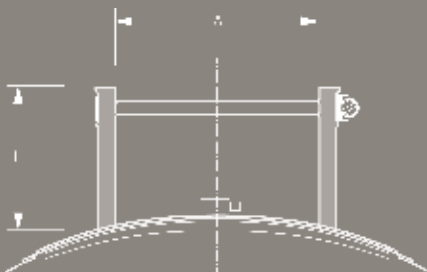


Position T-Flex centrally over cored hole and tighten clamps around the main sewer.



Push lateral pipe into saddle and tighten clamp.

DESCRIPTION



TECHNICAL SPECIFICATION

Sewer Saddle T-Flex for connecting lateral pipes to existing sewers or drains with a smooth surface.

Main Sewer
Lateral Pipe

DN/Material _____
DN/Material _____

Article Number _____

___ Qty ___ Price/Unit ___ Total

Manufacturer:

MÜCHER DICHTUNGEN®, D-50226 Frechen,
T +49 2234 928 03-0, F-55

Pressure Tightness:

0.5 bar water

Sealing Material:

EPDM rubber according to DIN EN 681-1

Stainless Steel:

AISI 304/1.4301 according to DIN EN 10088-2

Temperature Resistance:

-40°C to +120°C, temporary max. temperature +160°C

Standard/Approval:

MPA Test Certificate No. 22 00003601-02-1

PRODUCT RANGE 

SEWER SADDLE T-FLEX									
Article Number	Reference	A Size Range (mm)	Outside Ø Main Sewer (mm)	Core Drill (mm)	L Length (mm)	resistant to (bar)	Nm	Weight (kg)	
28104629	T-FLEX DN 100, Core Drill 117-127 mm	105-120	200-400	117-127	88	0,5	6	1,0	
28105125	T-FLEX DN 125, Core Drill 126-142 mm	115-130	200-400	126-142	88	0,5	6	1,2	
28106634	T-FLEX DN 150, Core Drill 167-177 mm	150-170	250-500	167-177	97	0,5	6	2,0	
28108630	T-FLEX DN 200, Core Drill 203-217 mm	175-200	300-500	203-217	100	0,5	10	3,1	



Lateral Connector

LTC

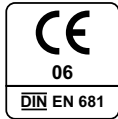
- + Connecting PP/PVC to Twin Wall or Ultra-Rib
- + Universal connector for many sewers
- + Reliable and durable solution
- + Resistant to 0.5 bar

Lateral Connector LTC – for connecting lateral plastic pipes to existing structured walled main sewers

The Lateral Connector LTC connects smooth walled plastic pipes to existing structured walled sewers like Twin Wall or Ultra-Rib and offers an economical and easy to install solution on site.

The Lateral Connector LTC can be generally used for various structured walled sewers, depending on the wall thickness (see application advices).

DIN 4060



INSTALLATION



Drill and clean hole 90° to pipe axis.

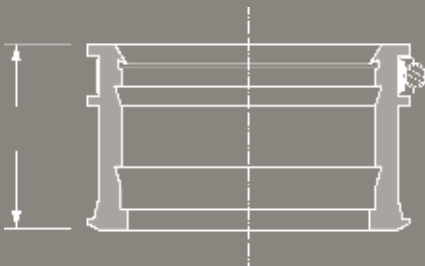


Insert LTC into main sewer.



Push lateral pipe into LTC and tighten clamp.

DESCRIPTION



TECHNICAL SPECIFICATION

Lateral Connector LTC for connecting lateral plastic pipes to existing structured walled main sewers.

Main Sewer	DN/Material	_____
Lateral Pipe	DN	_____
Article Number	_____	
	___ Qty ___ Price/Unit ___ Total	

Manufacturer: MÜCHER DICHTUNGEN®, D-50226 Frechen, T +49 2234 928 03-0, F-55

Pressure Tightness: 0.5 bar water

Sealing Material: EPDM rubber according to DIN EN 681-1

Stainless Steel: AISI 304/1.4301, alternatively AISI 316/1.4404 according to DIN EN 10088-2

Temperature Resistance: -40°C to +120°C, temporary max. temperature +160°C

Standard/Approval: MPA Test Certificate No. 22 0004535



PRODUCT RANGE

LATERAL CONNECTOR LTC FOR STRUCTURED WALLED MAIN SEWERS									
Article Number	Reference	Outside Ø Lateral Pipe (mm)	DN Main Sewer (mm)	Core Drill (mm)	L Length (mm)	resistant to (bar)	Nm	Weight (kg)	
32600110	LTC DN 100, Core Drill 127 mm	110	from DN 300	127	90	0,5	6	0,5	
32600125	LTC DN 125, Core Drill 142 mm	125	from DN 300	142	91	0,5	6	0,6	
32600160	LTC DN 150, Core Drill 177 mm	160	from DN 300	177	90	0,5	6	0,7	
32600200	LTC DN 200, Core Drill 217 mm	200	from DN 350	217	125	0,5	6	1,2	
32600250	LTC DN 250, Core Drill 217 mm	250	from DN 500	267	125	0,5	6	1,6	

Application advices:

- Lateral Connectors LTC DN 100, DN 125 and DN 150 can be used if the wall thickness of the main sewer is not larger than 55 mm.
- Lateral Connector LTC DN 200 and DN 250 can be used if the wall thickness of the main sewer is not larger than 90 mm.

CORE DRILL

for core drills for twin-walled plastic pipes

CORE DRILL				
Article Number	Reference	Core Drill (mm)	L Length (mm)	Weight (kg)
32601110	Core Drill 127 mm	127	110	1,5
32601125	Core Drill 142 mm	142	110	1,6
32601160	Core Drill 177 mm	177	110	2,1
32601200	Core Drill 217 mm	217	110	2,8



Recommended in combination with the T-Flex as well.



Lateral Connector

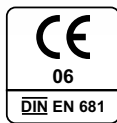
RRD M40

- + Connecting thin walled laterals to concrete sewers
- + Reliable and durable solution
- + EPDM rubber profile
- + Resistant to 0.5 bar

Lateral Connector M40 – for connecting thin walled lateral pipes to concrete main sewers (minimum wall thickness 45 mm)

The Lateral Connector M40 connects thin walled pipes (e.g. plastic, cast iron, etc.) to concrete main sewers with a minimum wall thickness of 45 mm.

DIN 4060



INSTALLATION



Drill and clean hole 90° to pipe axis.



Insert M40 into main sewer.



Apply lubricant to lateral plain end and push lateral into M40.

DESCRIPTION



TECHNICAL SPECIFICATION

Lateral Connector M40 for connecting thin walled lateral pipes to existing concrete main sewers with a minimum wall thickness of 45 mm.

Main Sewer _____ DN/Material _____
Lateral Pipe _____ DN _____

Article Number _____
_____ Qty _____ Price/Unit _____ Total

Manufacturer: MÜCHER DICHTUNGEN®, D-50226 Frechen,
T +49 2234 928 03-0, F-55

Pressure Tightness: 0.5 bar water

Jetting Resistance: 120 bar

Sealing Material: EPDM rubber according to DIN EN 681-1

Temperature Resistance: -40°C to +120°C, temporary max. temperature +160°C

Standard/Approval: MPA Test Certificate No. 22 1743097-02

PRODUCT RANGE 

LATERAL CONNECTOR RRD M40							
Article Number	Reference	Outside Ø Lateral Pipe (mm)	Min. Wall Thickness Main Sewer (mm)	Core Drill (mm)	L Length (mm)	resistant to (bar)	Weight (kg)
32200100	RRD M40 DN 100 KG	110	45	122	48	0,5	0,1
32200125	RRD M40 DN 125 KG	125	45	137	48	0,5	0,2
32200150	RRD M40 DN 150 KG	160	45	172	48	0,5	0,2
32200200	RRD M40 DN 200 KG	200	45	212	48	0,5	0,3
32200250	RRD M40 DN 250 KG	250	45	262	48	0,5	0,3
32200300	RRD M40 DN 300 KG	315	45	327	48	0,5	0,3
32200400	RRD M40 DN 400 KG	400	45	412	48	0,5	0,4
32100100	RRD M40 DN 100 SML	110	45	122	48	0,5	0,1
32100125	RRD M40 DN 125 SML	135	45	147	48	0,5	0,2
32100150	RRD M40 DN 150 SML	160	45	172	48	0,5	0,2
32400100	RRD M40 DN 100 GGG	118	45	130	48	0,5	0,2
32400150	RRD M40 DN 150 GGG	170	45	182	48	0,5	0,2



Lateral Connector

RRD M140

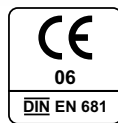
- + Connecting thin walled laterals to concrete sewers
- + Reliable and durable solution
- + Adaptable to pipe wall thickness
- + Resistant to 0.5 bar

Lateral Connector M140 – for connecting thin walled lateral pipes to concrete main sewers

The Lateral Connector M140 connects thin walled pipes (e.g. plastic, cast iron, etc.) to concrete main sewers.

The design of the Lateral Connector M140 allows cutting the connector to the length of the main sewer wall thickness.

DIN 4060



INSTALLATION



Drill and clean hole 90° to pipe axis.

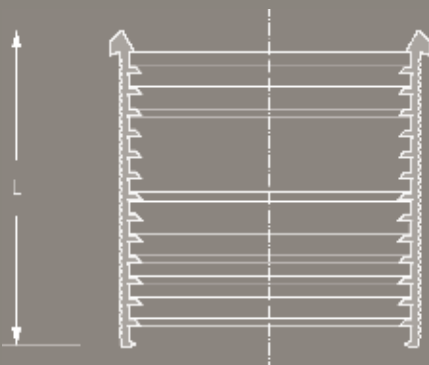


Cut M140 to length of wall thickness and insert M140 into main sewer.



Apply lubricant to lateral plain end and push lateral into M140.

DESCRIPTION



TECHNICAL SPECIFICATION

Lateral Connector M140 for connecting thin walled lateral pipes to existing concrete main sewers, covering a wall thickness of maximum 140 mm.

Main Sewer DN/Material _____
 Lateral Pipe DN/Material _____

Article Number _____
 _____ Qty _____ Price/Unit _____ Total

Manufacturer: MÜCHER DICHTUNGEN®, D-50226 Frechen,
 T +49 2234 928 03-0, F-55

Pressure Tightness: 0.5 bar water
 Jetting Resistance: 120 bar
 Sealing Material: EPDM rubber according to DIN EN 681-1
 Temperature Resistance: -40°C to +120°C, temporary max. temperature +160°C
 Standard/Approval: DIN EN 681-1

PRODUCT RANGE 

LATERAL CONNECTOR M140						
Article Number	Reference	Outside Ø Lateral Pipe (mm)	Core Drill (mm)	L Length (mm)	resistant to (bar)	Weight (kg)
32240100	RRD M140 DN 100 KG	110	122	155	0,5	0,4
32240125	RRD M140 DN 125 KG	125	137	155	0,5	0,4
32240150	RRD M140 DN 150 KG	160	172	155	0,5	0,6
32240200	RRD M140 DN 200 KG	200	212	155	0,5	0,7
32240250	RRD M140 DN 250 KG	250	262	155	0,5	0,9
32240300	RRD M140 DN 300 KG	315	327	155	0,5	1,0
32240400	RRD M140 DN 400 KG	400	412	155	0,5	1,1
32140100	RRD M140 DN 100 SML	110	122	155	0,5	0,4
32140125	RRD M140 DN 125 SML	135	147	155	0,5	0,5
32140150	RRD M140 DN 150 SML	160	172	155	0,5	0,6
32440100	RRD M140 DN 100 GGG	118	130	155	0,5	0,4
32440150	RRD M140 DN 150 GGG	170	182	155	0,5	0,6



B-RING

- + Connecting clay laterals to clay sewers
- + From clay sewer DN 300
- + Preformed EPDM rubber profile
- + Resistant to 0.5 bar

B-Ring - for connecting clay laterals to clay main sewers

The B-Ring according to DIN EN 295-4 connects plain ended clay pipes and fittings to clay main sewers.

Both B-Ring and clay fitting form an economical solution when connecting to existing sewers.



INSTALLATION



Drill and clean hole 90° to pipe axis.



Insert B-Ring according to the peak marking.



Push clay lateral into B-Ring.

DESCRIPTION



TECHNICAL SPECIFICATION

B-Ring for connecting clay laterals to clay main sewers.

Main Sewer DN/Material _____
Lateral Pipe DN/Material _____

Article Number _____
Qty Price/Unit Total

Manufacturer: MÜCHER DICHTUNGEN®, D-50226 Frechen,
T +49 2234 928 03-0, F-55
Pressure Tightness: 0.5 bar water
Sealing Material: EPDM rubber according to DIN EN 681-1
Temperature Resistance: -40°C to +120°C, temporary max. temperature +160°C
Standard/Approval: DIN EN 295-4



PRODUCT RANGE

B-RING							
Article Number	Reference	Outside Ø Lateral Pipe (mm)	from Clay Main Sewer (mm)	Core Drill (mm)	L Length (mm)	resistant to (bar)	Weight (kg)
34160150	B-Ring DN 150 Clay, Core Drill 200 mm	186	300	200	30	0,5	0,2
34160200	B-Ring DN 200 Clay, Core Drill 257 mm	242	400	257	30	0,5	0,3



NON-RATTLE-RING

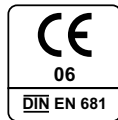
- + Avoids rattling of manhole covers
- + Protects the entire manhole
- + Rigid shape (hardness 90 IRHD)
- + Long-Life through EPDM mold

Non-Rattle-Ring - avoids rattling of damaged manhole covers

The Non-Rattle-Ring avoids rattling of old damaged manhole covers.

Through the EPDM rubber hardness of 90 IRHD a long-term protection against rattling is achieved.

The rigidity of the Non-Rattle-Ring allows an easy installation.



INSTALLATION



Clean cover frame.

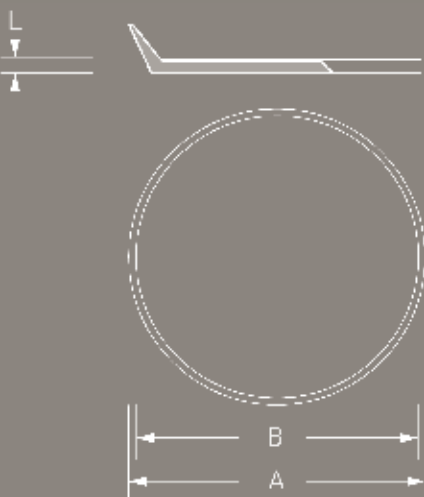


Insert Non-Rattle-Ring.



Pull cover back in.

DESCRIPTION



TECHNICAL SPECIFICATION

Non-Rattle-Ring for the protection of damaged manhole covers against rattling.

Internal Dimension	External Dimension	Manhole Cover
600 mm	665 mm	DIN 4290 (Class B)
600 mm	682 mm	DIN 19584 (Class D, E, F) Ö-Norm B 5110

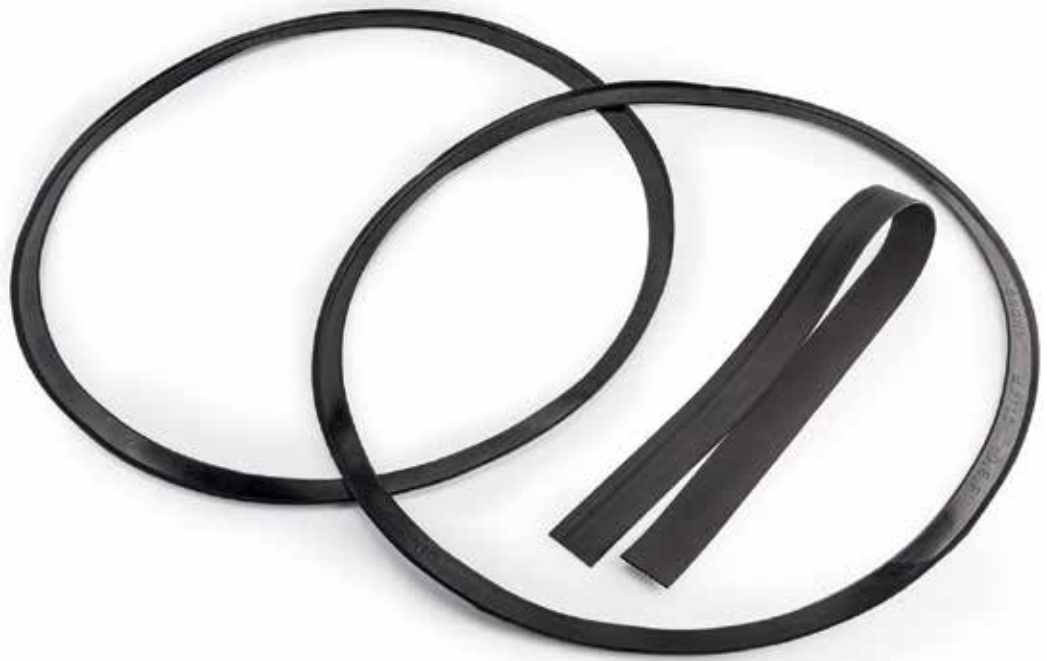
___ DIN	___ Qty	___ Price/Unit	___ Total
___ DIN	___ Qty	___ Price/Unit	___ Total

Manufacturer: MÜCHER DICHTUNGEN®, D-50226 Frechen, T +49 2234 928 03-0, F-55
 Sealing Material: EPDM rubber according to DIN EN 681-1, hardness 90 IRHD
 Temperature Resistance: -40°C to +120°C, temporary max. temperature +160°C
 Standard/Approval: DIN EN 681-1



PRODUCT RANGE

NON-RATTLE-RING						
Article Number	Reference	Class	A Ext. Dimension (mm)	B Int. Dimension (mm)	L Length (mm)	Weight (kg)
7060066	AKR DIN 4290	B	665	600	2	0,1
7060068	AKR DIN 19584 & Ö-Norm	D, E, F	682	600	2	0,1
7002050	AKR-Strip 50 mm wide	-	-	-	2	0,1





ANTIFREEZE RING FOR HYDRANTS

- + Prevents the freezing of surface boxes
- + Flexible and adoptable
- + Protects against ingressing water and dirt
- + Long-Life through EPDM mold

Antifreeze Ring for Hydrants – prevents the freezing of surface boxes

The Antifreeze Ring for Hydrants is made from non-ageing EPDM rubber which makes any greasing unnecessary during winter times and offers a perfect protection against the freezing of the surface box.

Furthermore the hydrants are protected against ingressing water and dirt.



INSTALLATION



Clean cover frame.

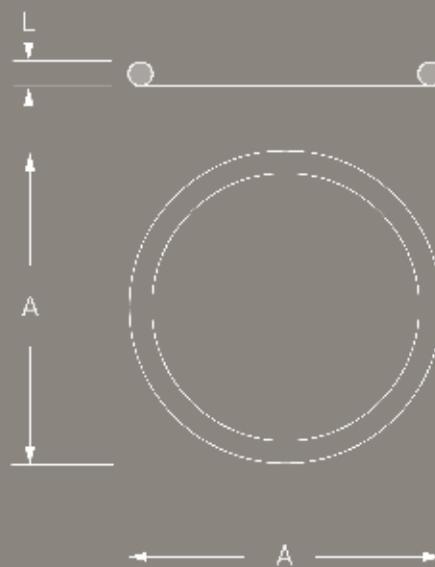
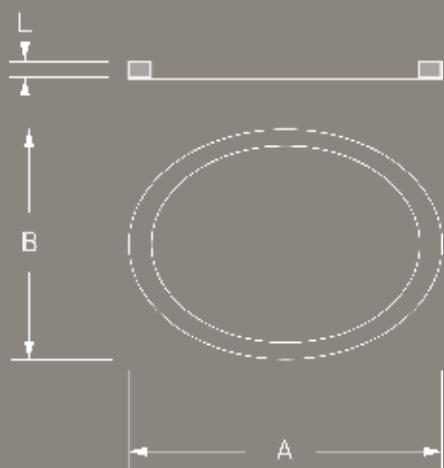


Insert Antifreeze Ring.



Close cover.

DESCRIPTION





PRODUCT RANGE 

ANTIFREEZE RING FOR HYDRANTS						
Article Number	Reference	Class	A (mm)	B (mm)	L (mm)	Weight (kg)
7204055	Ring for Underground Hydrant DN 80, DIN 4055	341 / 236mm	341	236	2	0,1
7204056	Ring for Surface Box, DIN 4056	157 mm	157	157	2	0,1
7204057	Ring for Surface Box, DIN 4057/38 (A)	92 mm	92	92	2	0,1
7214057	Ring for Surface Box, DIN 4057/74 (B)	118 mm	118	118	2	0,1

TECHNICAL SPECIFICATION 

The Antifreeze Ring for Hydrants prevents the freezing of surface boxes as well as the ingress of water and the other contaminations.

Ring for Underground Hydrant DN 80 (341/236 mm), DIN 4055	___ Qty	___ Price/Unit	___ Total
Ring for Surface Box (157 mm), DIN 4056	___ Qty	___ Price/Unit	___ Total
Ring for Surface Box (92 mm), DIN 4057/38 (A)	___ Qty	___ Price/Unit	___ Total
Ring for Surface Box (118 mm), DIN 4057/74 (B)	___ Qty	___ Price/Unit	___ Total

Manufacturer: MÜCHER DICHTUNGEN®, D-50226 Frechen, T +49 2234 928 03-0, F-55
 Sealing Material: EPDM rubber according to DIN EN 681-1
 Temperature Resistance: -40°C to +120°C, temporary max. temperature +160°C
 Standard/Approval: DIN EN 681-1



LUBRICANT MGM

- + Jointing forces are minimised
- + Compatibility with other sealing materials
- + For plastic, clay and concrete pipes
- + Various package sizes

Lubricant - minimizing the jointing forces for pipe laying
Lubricant is used to minimize the jointing forces when laying pipes such as plastic, clay or concrete.

Lubricant is compatible with other sealing materials.



INSTALLATION



Clean socket and spigot.

Apply lubricant to socket and spigot.

Push pipes together.

TECHNICAL SPECIFICATION

Lubricant for minimizing the jointing forces for pipe laying.

Pipe Material _____

Package Size _____

___ Qty ___ Price/Unit ___ Total

Manufacturer: MÜCHER DICHTUNGEN®, D-50226 Frechen,
T +49 2234 928 03-0, F-55

Scope of Application: Plastic Pipes (White), Clay Pipes (Blue), Concrete Pipes (Gray)

Packaging Size: White 250 g Tube, 500 g Tube, 1 kg Can, 3 kg Pail
Blue 1 kg Can, 3 kg Pail
Gray 5 kg Pail, 10 kg Pail

Standard/Approval: Safety Data Sheet (EU) No. 1907/2006

PRODUCT RANGE 

LUBRICANT MGM				
Article Number	Reference	Pipe Material	Content Packaging	Weight (kg)
25060004	Lubricant White 250 g	for plastic pipes	250 g Tube	0,3
25060005	Lubricant White 500 g	for plastic pipes	500 g Tube	0,5
25060011	Lubricant White 1 kg	for plastic pipes	1 kg Can	1,1
25060030	Lubricant White 3 kg	for plastic pipes	3 kg Pail	3,1
25061011	Lubricant Blue 1 kg	for clay pipes	1 kg Can	1,1
25062050	Lubricant Gray 5 kg	for concrete pipes	5 kg Pail	5,2

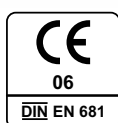


END CAP MEK

- + Sealing of pipe ends
- + For use inside and outside of buildings
- + Clamps in stainless steel
- + Resistant to 0.6 bar

End Cap - for the long and short term sealing of pipe ends
 The End Cap is used for the long and short term sealing of pipe ends to prevent ingress of dirt or water.

The End Cap can be used inside and outside of building.



INSTALLATION

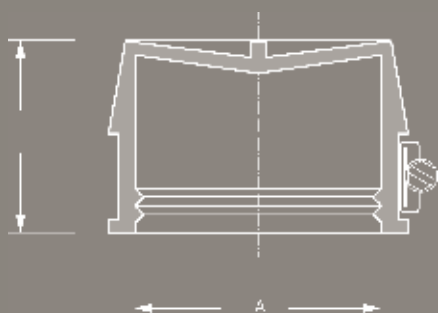


Slide End Cap over pipe end.



Tighten clamps.

DESCRIPTION



TECHNICAL SPECIFICATION

End Cap for the long and short term sealing of pipe ends.

Pipe DN/Material _____

Article Number _____
 Qty Price/Unit Total

Manufacturer: MÜCHER DICHTUNGEN®, D-50226 Frechen, T +49 2234 928 03-

0, F-55

Pressure Tightness: 0.6 bar water

Sealing Material: EPDM rubber according to DIN EN 681-1

Stainless Steel: AISI 304/1.4301, alternatively AISI 316/1.4404 according to DIN EN 10088-2

Temperature Resistance: -40°C to +120°C, temporary max. temperature +160°C

Standard/Approval: DIN EN 681-1

PRODUCT RANGE 

END CAP MEK						
Article Number	Reference	A Size Range (mm)	L Length (mm)	Nm	resistant to (bar)	Weight (kg)
21471011	End Cap MEK 1	45-55	40	0,6	6	0,2
21472019	End Cap MEK 2	56-66	40	0,6	6	0,2
21473017	End Cap MEK 3	80-90	40	0,6	6	0,2
21474015	End Cap MEK 4	105-115	40	0,6	6	0,2
21475020	End Cap MEK 5	130-140	40	0,6	6	0,2
21476028	End Cap MEK 6	155-165	40	0,6	6	0,3
21478016	End Cap MEK 8	205-215	40	0,6	6	0,3
21478017	End Cap MEK 10	250-260	40	0,6	6	0,4
21471101	End Cap MEK 11	270-285	40	0,6	6	0,5
21471218	End Cap MEK 12	315-325	40	0,6	6	0,5





INDUSTRIAL



FKM-Coupling

RESISTOR

- + Fluoro-Elastomer FKM
- + Industrial applications
- + Chemical and thermal resistant
- + Resistant to 0.6 bar

FKM-Coupling RESISTOR - chemical and thermal resistant for industrial applications

The FKM-Coupling RESISTOR joints plain ended industrial pipe systems with same diameters. It is suitable for above ground and non-pressure applications.

THE FKM-gasket allows a high chemical resistance and a thermal stability of up to +180°C.

The stainless steel shear band covers the entire coupling, therefore protecting the elastomer sleeve.



INSTALLATION



Position plain ended pipes.

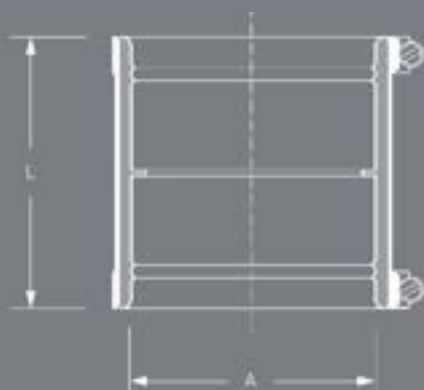


Slide sleeve over one plain end and push shear band over.



Tighten clamps reciprocally.

DESCRIPTION



TECHNICAL SPECIFICATION

FKM-Coupling RESISTOR used in above ground chemical resistant plain ended industrial pipe systems with same diameters. THE FKM-gasket allows a high chemical resistance and a thermal stability of up to +180°C.

Pipe 1 DN/Material _____
 Pipe 2 DN/Material _____

Article Number _____
 _____ Qty _____ Price/Unit _____ Total

Manufacturer: MÜCHER DICHTUNGEN®, D-50226 Frechen, T +49 2234 928 03-0, F-55
 Pressure Tightness: 0.6 bar water / -0.3 bar vacuum
 Jetting Resistance: 120 bar
 Sealing Material: FKM Fluororubber according to DIN ISO 1629
 Stainless Steel: AISI 304/1.4301 according to DIN EN 10088-2
 Temperature Resistance: -20°C to +180°C
 Standard/Approval: DIN EN 1629



PRODUCT RANGE 

FKM-COUPLING RESISTOR						
Article Number	Reference	A Size Range (mm)	L Length (mm)	resistant to (bar)	Nm	Weight (kg)
90809002	RESISTOR FKM 60	51 - 60	54	0,6	2	0,2
90809003	RESISTOR FKM 90	77 - 90	54	0,6	3	0,2
90809004	RESISTOR FKM 115	102 - 115	54	0,6	3	0,2
90809005	RESISTOR FKM 168	155 - 168	76	0,6	6	0,5

Further sizes are available on request.



Multi-Connector

TRANSFER

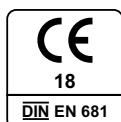
- + Connector for different materials and dimensions
- + For above ground industrial applications
- + Stainless steel shear band protects the entire sleeve
- + Resistant to 0.6 bar

Multi-Connector TRANSFER – for the connection of plain ended industrial pipe systems from all materials

The Multi-Connector TRANSFER joints plain ended industrial pipe systems with same or different diameters.

The stainless steel shear band covers the entire coupling, hence protecting the elastomer sleeve.

When changing nominal diameters, the flow direction needs consideration.



INDUSTRIAL

INSTALLATION



Position plain ended pipes.

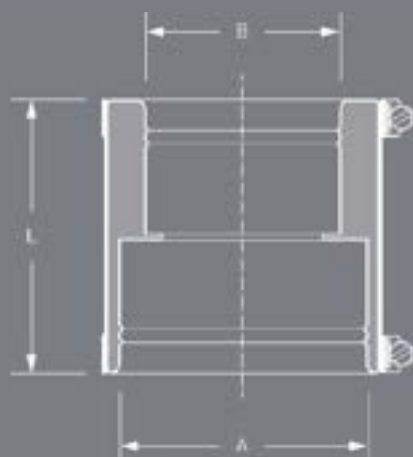


Slide sleeve over one plain end and push shear band over.



Tighten clamps reciprocally.

DESCRIPTION



TECHNICAL SPECIFICATION

Multi-Connector TRANSFER for the connection of plain ended industrial pipe systems from different materials with same or different diameters.

Pipe 1 DN/Material _____
 Pipe 2 DN/Material _____

Article Number _____
 _____ Qty _____ Price/Unit _____ Total

Manufacturer: MÜCHER DICHTUNGEN®, D-50226 Frechen, T +49 2234 928 03-0, F-55
 Pressure Tightness: 0.6 bar water / -0.3 bar vacuum
 Jetting Resistance: 120 bar
 Sealing Material: EPDM rubber according to DIN EN 681-1
 Stainless Steel: AISI 304/1.4301 according to DIN EN 10088-2
 Temperature Resistance: -40°C to +120°C, temporary max. temperature +160°C
 Standard/Approval: DIN EN 681-1

PRODUCT RANGE 

MULTI-CONNECTOR TRANSFER							
Article Number	Reference	A Size Range (mm)	B Size Range (mm)	L Length (mm)	resistant to (bar)	Nm	Weight (kg)
90801688	TRANSFER CP 150	45-50	45-50	54	0,6	2	0,1
90802637	TRANSFER KC 215	45-50	49-53	54	0,6	2	0,2
90803601	TRANSFER P 430	85-90	110-115	54	0,6	3	0,4
90803569	TRANSFER CP 43	83-90	105-115	54	0,6	3	0,4
90804401	TRANSFER CP 44	105-112	105-115	54	0,6	3	0,2

Further sizes are available on request.



Standard Coupling

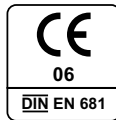
CANADA PLUS MSC TYP 2B

- + For all pipe materials
- + For above and below ground
- + For usage with bushes
- + Resistant to 2.5 bar

Standard Coupling Canada Plus Type 2B - for the connection of all pipe systems with different or same outside diameters

The Standard Coupling Canada Plus Type 2B connects all plain ended pipes within same or different dimensions and is compensating differences in outside diameters of max. 12 mm. Larger differences will require the use of bushes.

The Standard Coupling Canada Plus Type 2B can be used for applications above and below ground as well as inside and outside of buildings.



INSTALLATION



Position plain ended pipes.

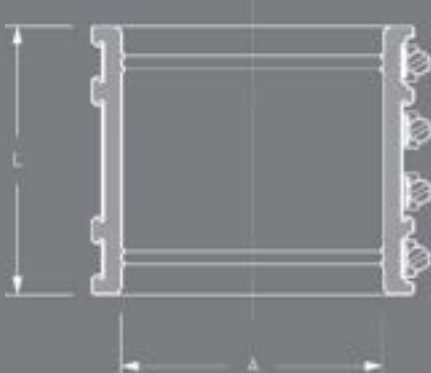


Slide coupling over one plain end.



Center coupling over joint. Tighten clamps and shear band reciprocally.

DESCRIPTION



TECHNICAL SPECIFICATION

Standard Coupling Canada Plus Type 2B for connection of all plain ended pipe materials with different or same outside diameters for applications above and below ground as well as inside and outside of buildings. Differences in outside diameters of more than 12 mm will require the use of bushes.

Pipe 1 DN/Material
 Pipe 2 DN/Material
 Article Number
 Qty Price/Unit Total

Manufacturer: MÜCHER DICHTUNGEN®, D-50226 Frechen,
 T +49 2234 928 03-0, F-55

Pressure Tightness: 2.5 bar water / -0.3 bar vacuum

Jetting Resistance: 120 bar

Corrosion Resistance: TOX®-Technology

Sealing Material: EPDM or Nitrile (NBR) rubber with lock in place profile according to DIN EN 681-1

Stainless Steel: AISI 304/1.4301, alternatively AISI 316/1.4404 according to DIN EN 10088-2

Temperature Resistance: -40°C to +120°C, temporary max. temperature +160°C

Standard/Approval: DIN EN 295-4



PRODUCT RANGE

STANDARD COUPLING CANADA PLUS MSC, TYP 2B

Article Number	Reference	A Size Range (mm)	L Length (mm)	resistant to (bar)	Nm	Weight (kg)
74000050	Canada Plus MSC 50	42-50	64	2,5	6	0,1
74000065	Canada Plus MSC 65	55-65	85	2,5	6	0,3
74000075	Canada Plus MSC 75	65-75	90	2,5	6	0,3
74000089	Canada Plus MSC 89	75-89	90	2,5	6	0,4
74000095	Canada Plus MSC 95	85-95	90	2,5	6	0,5
74000100	Canada Plus MSC 100	85-100	100	2,5	6	0,5
79000115	Canada Plus MSC 115	100-115	120	2,5	6	0,8
79000120	Canada Plus MSC 120	105-120	120	2,5	6	0,9
79000125	Canada Plus MSC 125	110-125	120	2,5	6	0,9
73100137	Canada Plus MSC 137	120-137	120	2,5	6	0,9
79000150	Canada Plus MSC 150	125-150	120	2,5	6	1,0
73125162	Canada Plus MSC 162	137-162	120	2,5	6	1,1
79000175	Canada Plus MSC 175	150-175	120	2,5	6	1,2
79000190	Canada Plus MSC 190	165-190	150	2,5	6	1,6
73150200	Canada Plus MSC 200	175-200	150	2,5	10	1,7
79000212	Canada Plus MSC 212	187-212	150	2,5	10	1,8
79000225	Canada Plus MSC 225	200-225	150	2,5	10	1,9
73200250	Canada Plus MSC 250	225-250	150	2,5	10	2,0
73200275	Canada Plus MSC 275	250-275	150	2,5	10	2,3
79000290	Canada Plus MSC 290	265-290	150	2,5	13	3,4
73250310	Canada Plus MSC 310	285-310	190	2,5	13	3,5
79000320	Canada Plus MSC 320	290-320	190	2,5	13	3,7
73250335	Canada Plus MSC 335	310-335	190	2,5	13	3,8

Larger sizes see Mücher-Civils.



Adaptor Coupling

MAC

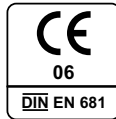
- + Adaptor for different outside diameters
- + For above and below ground
- + Reliable and durable solution
- + Resistant to 0.6 bar

Adaptor Coupling MAC - for the connection of all pipe systems with different outside diameters

The Adaptor Coupling MAC joints all plain ended pipes with different outside diameters and materials.

The Adaptor Coupling MAC can be used for applications above and below ground as well as inside and outside of buildings.

When changing nominal diameters, the flow direction needs consideration.



INSTALLATION



Position plain ended pipes.

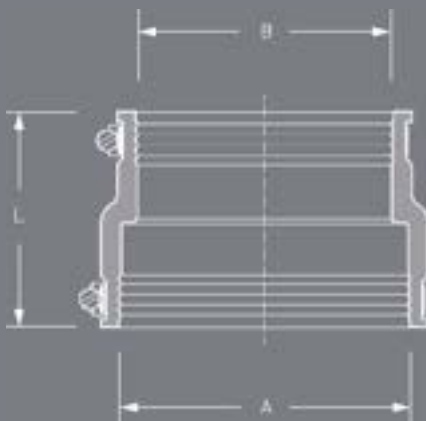


Slide adaptor coupling over one plain end.



Push other plain ended pipe into adaptor coupling and tighten clamps.

DESCRIPTION



TECHNICAL SPECIFICATION

Adaptor Coupling MAC for the connection of all plain ended pipe systems with different outside diameters for applications above and below ground as well as inside and outside of buildings.

Pipe 1 DN/Material _____
 Pipe 2 DN/Material _____

Article Number _____
 Qty Price/Unit Total

Manufacturer: MÜCHER DICHTUNGEN®, D-50226 Frechen,
 T +49 2234 928 03-0, F-55

Pressure Tightness: 0.6 bar water / -0.3 bar vacuum
 Jetting Resistance: 120 bar

Sealing Material: EPDM rubber with lock in place profile according to DIN EN 681-1
 Stainless Steel: AISI 304/1.4301, alternatively AISI 316/1.4404 according to DIN EN 10088-2

Temperature Resistance: -40°C to +120°C, temporary max. temperature +160°C
 Standard/Approval: DIN EN 295-4



PRODUCT RANGE

ADAPTOR COUPLING MAC							
Article Number	Reference	A Size Range (mm)	B Size Range (mm)	L Length (mm)	resistant to (bar)	Nm	Weight (kg)
76000401	MAC 0401	32 - 40	24 - 32	64	0,6	6	0,1
76000501	MAC 0501	40 - 50	24 - 32	65	0,6	6	0,1
76000502	MAC 0502	40 - 50	32 - 40	64	0,6	6	0,1
76000632	MAC 0632	53 - 63	32 - 40	56	0,6	6	0,1
76000633	MAC 0633	53 - 63	40 - 50	85	0,6	6	0,2
76000893	MAC 0893	75 - 89	40 - 50	95	0,6	6	0,4
76000894	MAC 0894	75 - 89	53 - 63	95	0,6	6	0,3
76000853	MAC 1153	100 - 115	40 - 50	95	0,6	6	0,5
76001154	MAC 1154	100 - 115	53 - 63	95	0,6	6	0,3
76001155	MAC 1155	100 - 115	75 - 89	95	0,6	6	0,5
76001251	MAC 1251	110 - 125	80 - 95	120	0,6	6	0,6
76001252	MAC 1252	110 - 125	100 - 115	120	0,6	6	0,6
76001360	MAC 1360	121 - 136	75 - 89	100	0,6	6	0,6
76001361	MAC 1361	121 - 136	80 - 95	120	0,6	6	0,7
76001362	MAC 1362	121 - 136	100 - 115	102	0,6	6	0,6
76001363	MAC 1363	121 - 136	110 - 125	120	0,6	6	0,6
76001451	MAC 1451	130 - 145	95 - 110	120	0,6	6	0,5
76001452	MAC 1452	130 - 145	110 - 125	100	0,6	6	0,7
76001501	MAC 1501	135 - 150	100 - 115	120	0,6	6	0,5
76001602	MAC 1602	144 - 160	110 - 125	120	0,6	6	0,8
76001603	MAC 1603	144 - 160	121 - 136	120	0,6	6	0,8
76001701	MAC 1701	155 - 170	100 - 115	120	0,6	6	1,0
76001702	MAC 1702	155 - 170	110 - 125	120	0,6	6	0,8
76001703	MAC 1703	155 - 170	130 - 145	120	0,6	6	0,8
76001801	MAC 1801	160 - 180	100 - 115	150	0,6	6	1,0
76001802	MAC 1802	160 - 180	110 - 125	150	0,6	6	1,1
76001805	MAC 1805	160 - 180	155 - 170	150	0,6	6	1,3
76001922	MAC 1922	170 - 192	110 - 125	120	0,6	6	0,9
76001923	MAC 1923	170 - 192	121 - 136	120	0,6	6	0,9
76001924	MAC 1924	170 - 192	144 - 160	120	0,6	6	0,9
76001991	MAC 1991	180 - 200	100 - 115	155	0,6	6	1,2
76001993	MAC 1993	180 - 200	121 - 136	150	0,6	6	1,2
76002000	MAC 2000	180 - 200	130 - 145	150	0,6	6	1,4
76002001	MAC 2001	180 - 200	155 - 170	150	0,6	6	1,3
76002002	MAC 2002	180 - 200	160 - 180	150	0,6	6	1,3
76002102	MAC 2102	185 - 210	110 - 125	150	0,6	6	1,3
76002104	MAC 2104	185 - 210	130 - 145	150	0,6	6	1,3
76002105	MAC 2105	185 - 210	144 - 160	150	0,6	6	1,2
76002152	MAC 2152 offset	200 - 215	100 - 115	150	0,6	6	1,0
76002203	MAC 2203	195 - 220	155 - 170	150	0,6	6	1,2
76002303	MAC 2303	205 - 230	130 - 145	165	0,6	6	1,8
76002352	MAC 2352	210 - 235	110 - 125	150	0,6	6	1,5
76002353	MAC 2353	210 - 235	121 - 136	150	0,6	6	1,5
76002354	MAC 2354	210 - 235	144 - 160	150	0,6	6	1,5
76002355	MAC 2355	210 - 235	170 - 192	150	0,6	6	1,5
76002356	MAC 2356	210 - 235	190 - 215	150	0,6	6	1,5
76002505	MAC 2505	225 - 250	155 - 170	150	0,6	6	1,4
76002507	MAC 2507	225 - 250	195 - 220	150	0,6	6	1,5
76002508	MAC 2508	225 - 250	205 - 230	152	0,6	6	1,6
76002654	MAC 2654	240 - 265	144 - 160	150	0,6	6	1,8
76002655	MAC 2655	240 - 265	170 - 192	150	0,6	6	1,7

Larger sizes see Mücher-Civils.



Drain Coupling

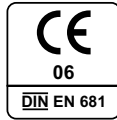
MDC

- + Coupling for same outside diameters
- + For above and below ground
- + Reliable and durable solution
- + Resistant to 0.6 bar

Drain Coupling MDC - for the connection of all pipe systems with same outside diameters

The Drain Coupling MDC connects all plain ended pipes with same outside diameters and materials.

The Drain Coupling MDC can be used for applications above and below ground as well as inside and outside of buildings.



INSTALLATION



Position plain ended pipes.

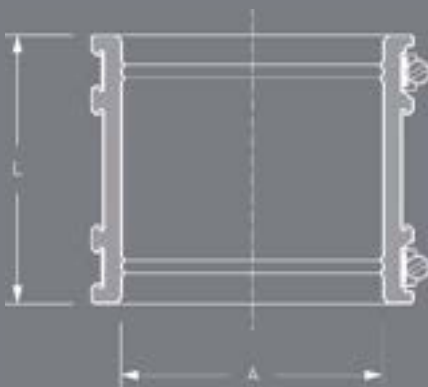


Slide coupling over one plain end.



Center coupling over joint. Tighten clamps.

DESCRIPTION



TECHNICAL SPECIFICATION

Drain Coupling MDC for the connection of all plain ended pipe systems with same outside diameters for applications above and below ground as well as inside and outside of buildings.

Pipe 1 DN/Material _____
 Pipe 2 DN/Material _____
 Article Number _____
 ___ Qty ___ Price/Unit ___ Total

Manufacturer: MÜCHER DICHTUNGEN®, D-50226 Frechen, T +49 2234 928 03-0, F-55
 Pressure Tightness: 0.6 bar water / -0.3 bar vacuum
 Jetting Resistance: 120 bar
 Sealing Material: EPDM or Nitrile (NBR) rubber with lock in place profile according to DIN EN 681-1
 Stainless Steel: AISI 304/1.4301, alternatively AISI 316/1.4404 according to DIN EN 10088-2
 Temperature Resistance: -40°C to +120°C, temporary max. temperature +160°C
 Standard/Approval: DIN EN 295-4

PRODUCT RANGE 

DRAIN COUPLING MDC						
Article Number	Reference	A Size Range (mm)	L Length (mm)	resistant to (bar)	Nm	Weight (kg)
76381190	MDC 32	24 - 32	64	0,6	3	0,1
76381195	MDC 40	32 - 40	64	0,6	3	0,1
76381200	MDC 50	42 - 50	64	0,6	3	0,1
76381205	MDC 56	50 - 56	70	0,6	3	0,1
76381947	MDC 65	55 - 65	85	0,6	3	0,2
76381952	MDC 75	65 - 75	90	0,6	3	0,3
76303021	MDC 89	75 - 89	90	0,6	3	0,4
76381970	MDC 95	85 - 95	90	0,6	6	0,4
76381955	MDC 100	85 - 100	100	0,6	6	0,4
76481958	MDC 115	100 - 115	120	0,6	6	0,4
76481959	MDC 120	105 - 120	106	0,6	6	0,4
76481125	MDC 125	110 - 125	120	0,6	6	0,4
76481960	MDC 137	120 - 137	120	0,6	6	0,4
76481961	MDC 150	125 - 150	120	0,6	6	0,5
76481962	MDC 162	137 - 162	120	0,6	6	0,5
76125165	MDC 165	150 - 165	105	0,6	6	0,5
76481964	MDC 175	150 - 175	120	0,6	6	0,6
76481966	MDC 190	165 - 190	150	0,6	6	0,6
76481978	MDC 200	175 - 200	150	0,6	6	0,6
76481980	MDC 212	187 - 212	150	0,6	6	0,6
76481982	MDC 225	200 - 225	150	0,6	6	0,7
76481983	MDC 250	225 - 250	150	0,6	6	0,7
76481984	MDC 275	250 - 275	150	0,6	6	0,8
76481290	MDC 290	265 - 290	150	0,6	6	0,9

Larger sizes see Mücher-Civils.



Single Pipe Connector MGA



Drain Coupling MDC



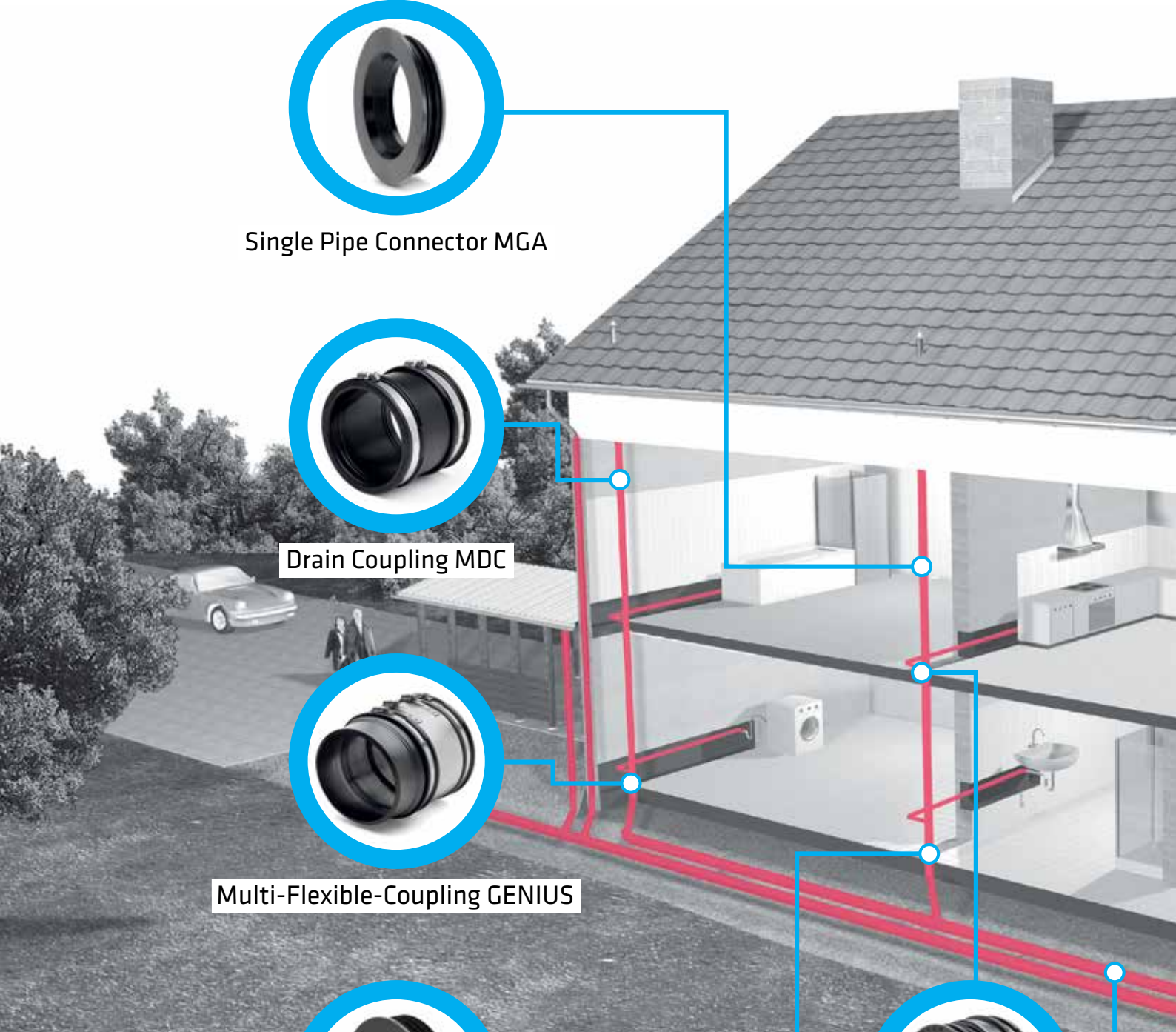
Multi-Flexible-Coupling GENIUS

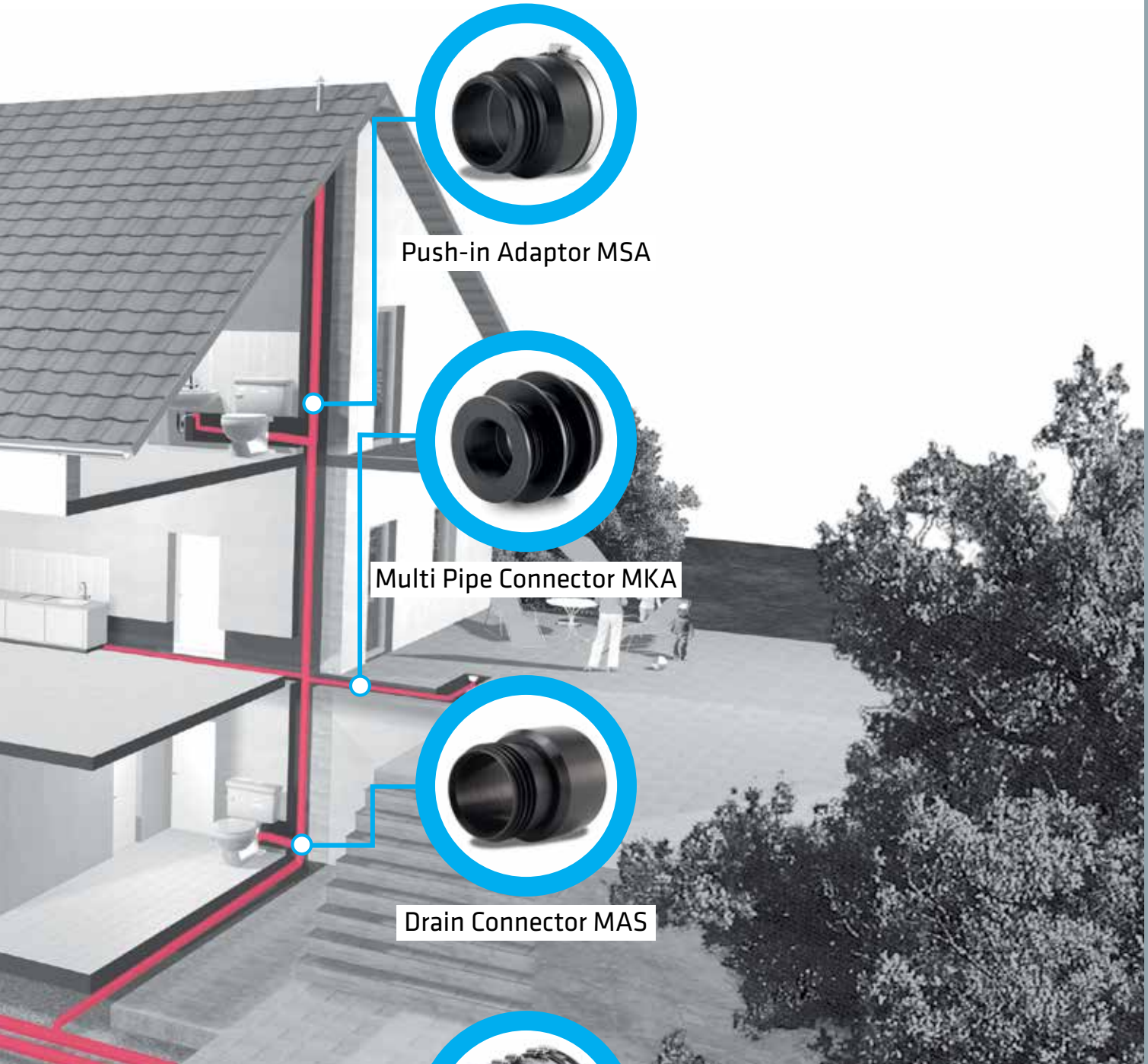


Internal Drain Connector MRS



Adaptor Coupling MAC





Push-in Adaptor MSA



Multi Pipe Connector MKA



Drain Connector MAS



Coupling Canada Plus MSC



Internal Drain Connector

MRS

- + For different nominal sizes
- + Internal seal
- + Resistant to 0.5 bar
- + Easy & Quick installation

Internal Drain Connector - for the internal connection of pipes with different dimensions.

The internal drain connector is suitable for flush mounting as well as for exposed pipe connections. The MRS is made of a high-quality EPDM sealing material, which is characterized by durability and has a noise-reducing effect in downpipes.



INSTALLATION



Position pipe ends.

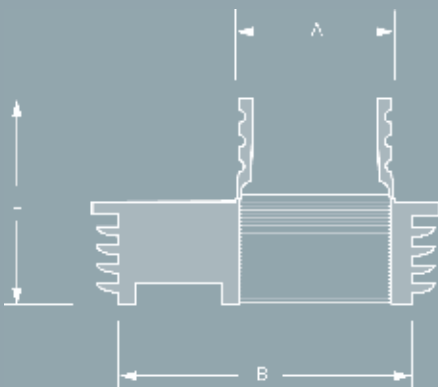


Fold in or cut off internal drain connector at the desired position, depending on the connection situation.



Insert internal drain connector into larger pipe, apply lubricant and push in smaller pipe.

DESCRIPTION



TECHNICAL SPECIFICATION

Internal Drain Connector - for the internal connection of pipes with different dimensions.

Pipe 1 DN/Material _____
 Pipe 2 DN/Material _____

Article Number _____
 _____ Qty _____ Price/Unit _____ Total

Manufacturer: MÜCHER DICHTUNGEN®, D-50226 Frechen, T +49 2234 928 03-0, F -55
 Pressure Tightness: 0.5 bar water / -0.3 vacuum
 Sealing Material: EPDM rubber according to DIN EN 681-1
 Temperature Resistance: -40°C to +120°C, temporary max. temperature +160°C
 UV-/Ozone Resistance: Resistant to UV radiation and ozone
 Standard/Approval: DIN EN 681-1



PRODUCT RANGE

INTERNAL DRAIN CONNECTOR MRS						
Article Number	Reference	A Size Range (mm)	B Size Range (mm)	L Length (mm)	resistant to (bar)	Weight (kg)
500130	Internal Drain Connector MRS	40/50	103	67	0,5	0,15
500131	Internal Drain Connector MRS	75/90	103	67	0,5	0,10



Drain Connector

MAS

- + For connection of SMU to plastic pipes
- + Internal seal
- + Resistant to 0.5 bar
- + Easy & quick installation

Drain connector MAS – for internal connection of SML pipes to plastic pipes

The connector is made of a high-quality EPDM sealing material, which is characterised by durability and has a noise-reducing effect in downpipes.

It is suitable for flush mounting as well as for use with exposed pipe connections.w

Deutsches
Institut
für
Bautechnik



INSTALLATION



Position pipe ends.

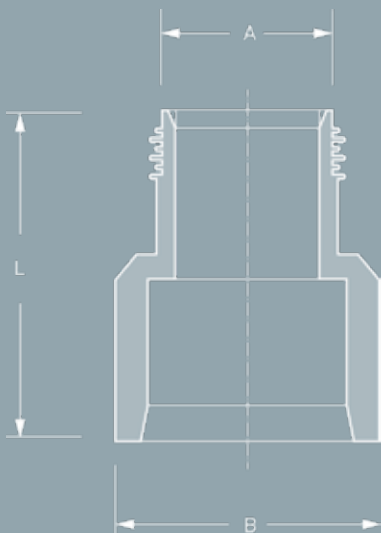


Press the drain connector into the plastic socket as far as it will go. Lip seal in plastic socket does not need to be removed.



Push the SMU-pipe into the drain connector.

DESCRIPTION



TECHNICAL SPECIFICATION

Drain connector MAS – for internal connection of SML pipes to plastic pipes.

Pipe 1 DN/Material _____
Pipe 2 DN/Material _____

Article Number _____
____ Qty ____ Price/Unit ____ Total

Manufacturer: MÜCHER DICHTUNGEN®, D-50226 Frechen,
T +49 2234 928 03-0, F-55
Pressure Tightness: -0.5 bar water / -0.3 bar vacuum
Sealing Material: EPDM according to DIN EN 681-1
Temperature Resistance: -40°C to +120°C, temporary max. temperature +160°C
UV-/Ozone Resistance: Resistant to UV radiation and ozone
Standard/Approval: DIN EN 681-1



PRODUCT RANGE

DRAIN CONNECTOR MAS						
Article Number	Reference	A Size Range (mm)	B Size Range (mm)	L Length (mm)	resistant to (bar)	Weight (kg)
500127	Drain Connector MAS, DN 50	50	58	93	0,5	0,15
500128	Drain Connector MAS, DN 70	75	78	105	0,5	0,25
500129	Drain Connector MAS, DN 100	110	110	117	0,5	0,40



Connector

J-BEND SEAL

- + for connection of siphon to HT-socket
- + internal seal
- + resistant to 0.5 bar
- + easy & quick installation

J-Bend Seal - for internal connection of Siphon to HT-socket

The connector is used to connect the siphon to HT-socket. It is suitable for flush mounting installation as well as for use with exposed pipe connections. The J-Bend Seal is made of a high-quality EPDM sealing material, which is characterised by durability and has a noise-reducing effect in downpipes.



INSTALLATION



Position pipe ends.

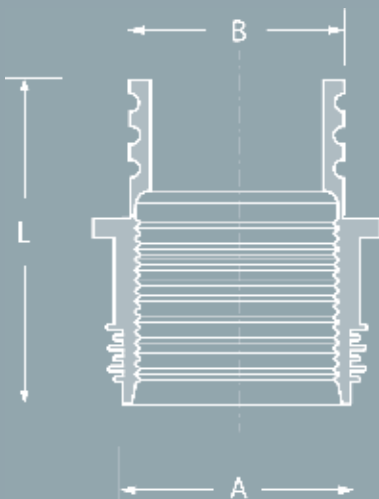


Press the connector into the HT socket as far as it will go. Lip seal in HT socket does not need to be removed.



Push the siphon into the HT connector.

DESCRIPTION



TECHNICAL SPECIFICATION

J-Bend Seal - for internal connection of Siphon to HT-socket.

Pipe 1 DN/Material _____
 Pipe 2 DN/Material _____

Article Number _____
 _____ Qty _____ Price/Unit _____ Total

Manufacturer: MÜCHER DICHTUNGEN®, D-50226 Frechen, T +49 2234 928 03-0, F-55
 Pressure Tightness: -0.5 bar water / -0.3 bar vacuum
 Sealing Material: EPDM according to DIN EN 681-1
 Temperature Resistance: -40°C to +120°C, temporary max. temperature +160°C
 UV-/Ozone Resistance: Resistant to UV radiation and ozone
 Standard/Approval: DIN EN 681-1

PRODUCT RANGE 

J-BEND SEAL						
Article Number	Reference	A Size Range (mm)	B Size Range (mm)	L Length (mm)	resistant to (bar)	Weight (kg)
500137	J-Bend Seal	50	40/32	78	0,5	0,05



PUSH-IN ADAPTOR MSA

- + For different materials
- + Internal seal
- + Resistant to 0.5 bar

Push-In Adaptor - for the internal connection of pipe systems with different dimensions and materials

The single Pipe Connector joints pipe systems with different dimensions and materials and can be used for flush-mounting and non-buried pipe connections.

The Push-In Adaptor is made from a durable EPDM rubber and has a noise reducing impact on downpipes.



INSTALLATION



Position pipe ends.

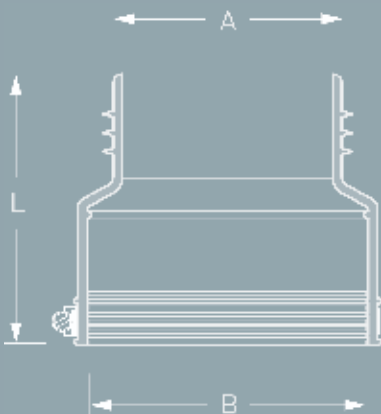


Insert Single Pipe Connector into larger pipe. Apply lubricant to plain ended pipe.



Insert smaller pipe into Single Pipe Connector.

DESCRIPTION



TECHNICAL SPECIFICATION

Push-In Adaptor for the internal connection of pipe systems with different dimensions and materials.

Pipe 1 DN/Material _____
 Pipe 2 DN/Material _____

Article Number _____
 _____ Qty _____ Price/Unit _____ Total

Manufacturer: MÜCHER DICHTUNGEN®, D-50226 Frechen, T +49 2234 928 03-0, F -55
 Pressure Tightness: 0.5 bar water / -0.3 bar vacuum
 Sealing Material: EPDM rubber according to DIN EN 681-1
 Temperature Resistance: -40°C to +120°C, +160°C
 Standard/Approval: DIN EN 681-1

PRODUCT RANGE 

PUSH-IN ADAPTOR MSA							
Article Number	Reference	A Size Range (mm)	B Size Range (mm)	L Length (mm)	resistant to (bar)	Nm	Weight (kg)
500117	Push-In Adaptor MSA 75	69 - 75	73 - 85	100	0,6	6	0,20
500116	Push-In Adaptor MSA 100	100 - 105	100 - 116	116	0,6	6	0,30
500118	Push-In Adaptor MSA 125	117 - 125	120 - 141	125	0,6	6	0,50
500138	Push-In Adaptor MSA 150	145 - 157	150 - 168	165	0,6	6	0,75



SINGLE PIPE CONNECTOR MGA

- + For different dimensions and materials
- + Internal seal
- + For horizontal and vertical installations
- + Resistant to 0.5 bar

Single Pipe Connector – for the internal connection of pipe systems with different dimensions and materials

The Single Pipe Connector joints pipe systems with different dimensions and materials and can be used for flush-mounting and non-buried pipe connections.

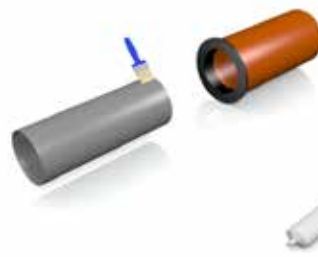
The Single Pipe Connector is made from a durable EPDM rubber and has a noise reducing impact on downpipes.



INSTALLATION



Position pipe ends.

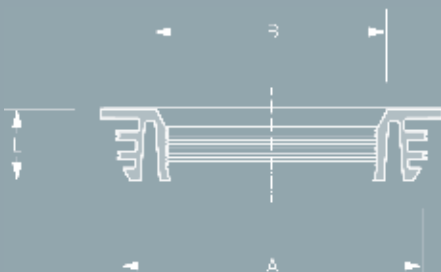


Insert Single Pipe Connector into larger pipe. Apply lubricant to plain ended pipe.



Insert smaller pipe into Single Pipe Connector.

DESCRIPTION



TECHNICAL SPECIFICATION

Single Pipe Connector for the internal connection of pipe systems with different dimensions and materials.

Pipe 1 DN/Material
 Outside Ø (mm)
 Pipe 2 DN/Material
 Internal Ø (mm)

Article Number
 Qty Price/Unit Total

Manufacturer: MÜCHER DICHTUNGEN®, D-50226 Frechen,
 T +49 2234 928 03-0, F-55

Pressure Tightness: 0.5 bar water / -0.3 bar vacuum
 Sealing Material: EPDM rubber according to DIN EN 681-1

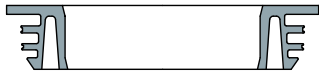
Temperature Resistance: -40°C to +120°C, temporary max. temperature +160°C
 Standard/Approval: DIN EN 681-1



PRODUCT RANGE

SINGLE PIPE CONNECTOR MGA						
Article Number	Reference	A Size Range (mm)	B Size Range (mm)	L Length (mm)	resistant to (bar)	Weight (kg)
500120	Single Pipe Connector MGA 45 32	45	32	23	0,5	0,02
500121	Single Pipe Connector MGA 45 40	45	40	23	0,5	0,01
500000	Single Pipe Connector MGA 73 50	73	50	23	0,5	0,10
500122	Single Pipe Connector MGA 123/130 102	123 / 130	102	102	0,5	0,30
500001	Single Pipe Connector MGA 150 110	150	110	36	0,5	0,20

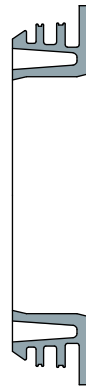
Application schedules of the Single Pipe Connectors can be found on pages 102 – 103.



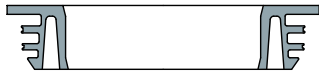
SINGLE PIPE CONNECTOR GA 73 | 50

Article-No. 500000

Spigot/Socket	Pipe	DN
Spigot	Loro X	70
Spigot	Geberit Silent PP	70
Spigot	Eternit Fibre Cement	70
Spigot	Cast Iron SML	70
Spigot	HT	70
Spigot	Raupiano Plus	70
Spigot/Socket	Cast Iron GA	70



Pipe	DN
Geberit PE	50
Geberit Silent PP	50
HT	50
Raupiano Plus	50
Zinc Downpipe	50



SINGLE PIPE CONNECTOR GA 150 | 110

Article-No. 500001

Spigot/Socket	Pipe	DN
Spigot	Geberit PE	150
Spigot	Geberit Silent PP	150
Spigot	Skolan dB	150
Spigot	HT	150
Spigot	Raupiano Plus	150
Spigot/Socket	Zinc Downpipe	150
Spigot	Eternit Fibre Cement	150
Spigot	Gusseisenrohr GA	150
Socket	Gusseisenrohr GA	125
Spigot	Cast Iron SML	150
Spigot	Gusseisenrohr GGG	150



Pipe	DN
Geberit Silent db20	100
Skolan dB	100
Geberit PE	100
Geberit Silent PP	100
HT	100
Raupiano Plus	100
Cast Iron SML	100



MULTI PIPE CONNECTOR MKA

- + For different dimensions and materials
- + Internal seal
- + For horizontal and vertical installations
- + Resistant to 0.5 bar

Multi Pipe Connector - for the internal connection of pipe systems with different dimensions and materials

The Multi Pipe Connector joints pipe systems with different dimensions and materials and can be used for flush-mounting and non-buried pipe connections. Multi Pipe Connectors can be combined with other Multi Pipe Connectors.

The Multi Pipe Connector is made from a durable EPDM rubber and has a noise reducing impact on downpipes.



INSTALLATION



Position pipe ends and cut off Multi Pipe Connector depending on the application.

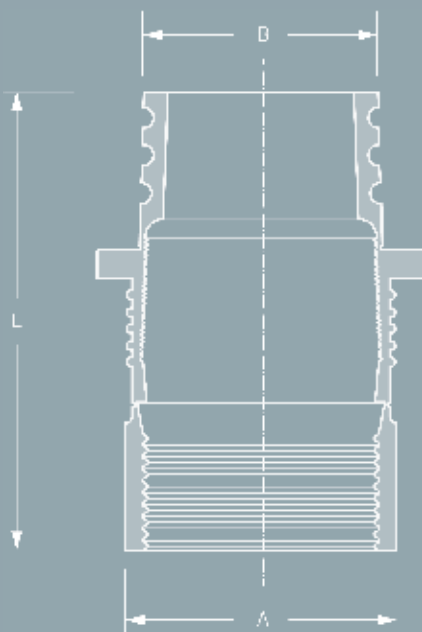


Fold in Multi Pipe Connector depending on the application.



Insert Multi Pipe Connector into larger pipe, apply lubricant to plain ended pipe and insert smaller pipe.

DESCRIPTION



TECHNICAL SPECIFICATION

Multi Pipe Connector for the internal connection of pipe systems with different dimensions and materials.

Pipe 1 DN/Material _____
 Outside Ø (mm) _____
 Pipe 2 DN/Material _____
 Internal Ø (mm) _____

Article Number _____
 ___ Qty ___ Price/Unit ___ Total

Manufacturer: MÜCHER DICHTUNGEN®, D-50226 Frechen,
 T +49 2234 928 03-0, F-55
 Pressure Tightness: 0.5 bar water / -0.3 bar vacuum
 Sealing Material: EPDM rubber according to DIN EN 681-1
 Temperature Resistance: -40 C° to +120° C, temporary max. temperature +160° C
 Standard/Approval: DIN EN 681-1

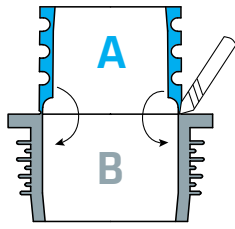
PRODUCT RANGE 

MULTI PIPE CONNECTOR MKA						
Article Number	Reference	A Size Range (mm)	B Size Range (mm)	L Length (mm)	resistant to (bar)	Weight (kg)
500002	Multi Pipe Connector MKA 50 40/32	50/40	32	64	0,5	0,10
500003	Multi Pipe Connector MKA 64/58 50/40	64/58	50/40	96	0,5	0,10
500004	Multi Pipe Connector MKA 75/70 50/40	75/70	50/40	98	0,5	0,10
500005	Multi Pipe Connector MKA 96/83 75/50	96/83	75/50	100	0,5	0,20
500126	Multi Pipe Connector MKA 100/105 75/50	100-105	75/50	70	0,5	0,20
500006	Multi Pipe Connector MKA 100/105 90/75	100-105	90/75	70	0,5	0,20
500007	Multi Pipe Connector MKA 130/123 110/75	130-123	110/75	69	0,5	0,30
500008	Multi Pipe Connector MKA 150/125 110	150/125	110	120	0,5	0,40

Multi Pipe Connectors are very flexible and can be combined and installed in various combinations.

Depending on the application parts of the Multi Pipe Connectors are folded in, removed or pushed inside each other.

Pages 106 - 114 show the application schedules of the Multi Pipe Connectors and in which combinations they can be installed for various different inside and outside pipe diameters.

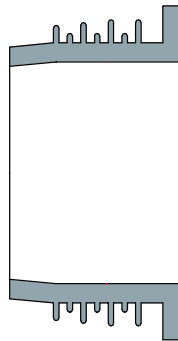


MULTI PIPE CONNECTOR MKA 50 | 40/32

Article-No. 500002

COMBINATIONS

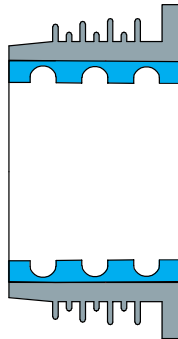
Spigot/Socket	Pipe	DN
Spigot	Geberit Silent db20	56
Socket	HT	50
Spigot	Loro X	50
Socket	Raupiano Plus	50
Spigot	Geberit PE	50
Socket	Geberit Silent PP	50
Socket	Skolan dB	50
Spigot	Eternit Fibre Cement	50
Spigot/Socket	Zinc Downpipe	50
Spigot	Cast Iron SML	50



B

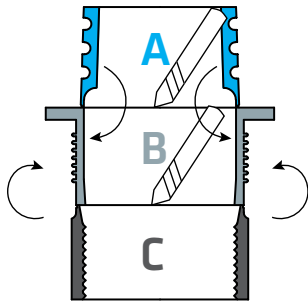
Pipe	DN
Geberit PE	40
Geberit Silent PP	40
HT	40
Raupiano Plus	40

Spigot/Socket	Pipe	DN
Spigot	Geberit Silent db20	56
Socket	HT	50
Spigot	Loro X	50
Socket	Raupiano Plus	50
Spigot	Geberit PE	50
Socket	Geberit Silent PP	50
Socket	Skolan dB	50
Spigot	Eternit Fibre Cement	50
Spigot/Socket	Zinc Downpipe	50
Spigot	Cast Iron SML	50



A
+
B

Pipe	DN
Geberit PE	32
Geberit Silent PP	32
HT	32
Loro X	32



MULTI PIPE CONNECTOR MKA 64/58 | 50/40

Article-No. 500003

COMBINATIONS

Spigot/Socket	Pipe	DN
Socket	Geberit Silent db20	56
Socket	Skolan dB	50
Spigot	Old Plastic Pipe (DDR)	63
Spigot	Zinc Downpipe	60

Spigot/Socket	Pipe	DN
Socket	Old Plastic Pipe (DDR)	63

Spigot/Socket	Pipe	DN
Socket	Geberit Silent db20	56
Socket	Skolan dB	50
Spigot	Old Plastic Pipe (DDR)	63
Spigot	Zinc Downpipe	60

Spigot/Socket	Pipe	DN
Socket	Old Plastic Pipe (DDR)	63



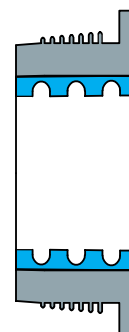
B

Pipe	DN
Geberit PE	50
Geberit Silent PP	50
HT	50
Raupiano Plus	50
Zinc Downpipe	50



B
+
C

Pipe	DN
Geberit PE	50
Geberit Silent PP	50
HT	50
Raupiano Plus	50
Zinc Downpipe	50



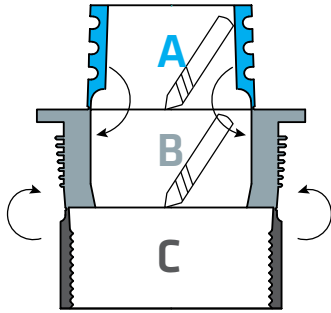
A
+
B

Pipe	DN
Geberit PE	40
Geberit Silent PP	40
HT	40
Raupiano Plus	40



A
+
B
+
C

Pipe	DN
Geberit PE	40
Geberit Silent PP	40
HT	40
Raupiano Plus	40



MULTI PIPE CONNECTOR MKA 75/70 | 50/40

Article-No. 500004

COMBINATIONS

Spigot/Socket	Pipe	DN
Spigot	Geberit Silent db20	70
Spigot	Geberit PE	70
Spigot	Skolan dB	70
Spigot	Geberit Silent PP	70
Spigot	HT	70
Spigot	Raupiano Plus	70
Spigot	Cast Iron SML	70
Spigot	Eternit Fibre Cement	70
Spigot	Loro X	70



B

Pipe	DN
Geberit PE	50
Geberit Silent PP	50
HT	50
Raupiano Plus	50
Zinc Downpipe	50

Spigot/Socket	Pipe	DN
Socket	HT	70
Socket	Raupiano Plus	70
Socket	Geberit Silent PP	70
Spigot/Socket	Zinc Downpipe	76
Spigot	Cast Iron SML	80
Socket	Loro X	70
Socket	Eternit Fibre Cement	50

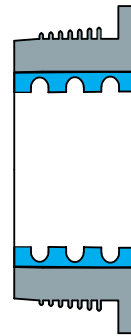


B
+
C

Pipe	DN
Geberit PE	50
Geberit Silent PP	50
HT	50
Raupiano Plus	50
Zinc Downpipe	50



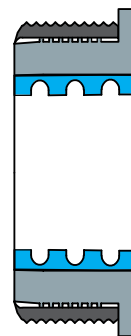
Spigot/Socket	Pipe	DN
Spigot	Geberit Silent db20	70
Spigot	Geberit PE	70
Spigot	Skolan dB	70
Spigot	Geberit Silent PP	70
Spigot	HT	70
Spigot	Raupiano Plus	70
Spigot	Cast Iron SML	70
Spigot	Eternit Fibre Cement	70
Spigot	Loro X	70



A
+
B

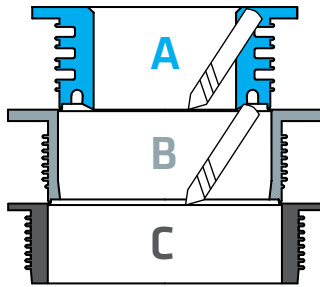
Pipe	DN
Geberit PE	40
Geberit Silent PP	40
HT	40
Raupiano Plus	40

Spigot/Socket	Pipe	DN
Socket	HT	70
Socket	Raupiano Plus	70
Socket	Geberit Silent PP	70
Spigot/Socket	Zinc Downpipe	76
Spigot	Cast Iron SML	80
Socket	Loro X	70
Socket	Eternit Fibre Cement	50



A
+
B
+
C

Pipe	DN
Geberit PE	40
Geberit Silent PP	40
HT	40
Raupiano Plus	40

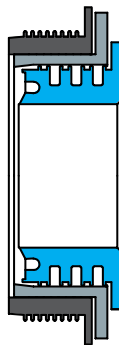


MULTI PIPE CONNECTOR MKA 96/83 | 75/50

Article-No. 500005

COMBINATIONS

Spigot/Socket	Pipe	DN
Spigot	Loro X	100
Spigot	Geberit Silent db20	100
Spigot	Cast Iron GGG	100
Spigot/Socket	Zinc Downpipe	100
Spigot	Old Plastic Pipe (DDR)	100
Spigot	Skolan dB	100
Spigot	Eternit Fibre Cement	100
Socket	Eternit Fibre Cement	70



A
+
B
+
C

Pipe	DN
Geberit PE	50
Geberit Silent PP	50
HT	50
Raupiano Plus	50
Zinc Downpipe	50

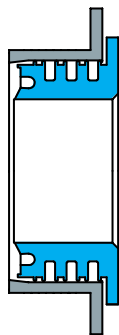
Spigot/Socket	Pipe	DN
Spigot	Loro X	100
Spigot	Geberit Silent db20	100
Spigot	Cast Iron GGG	100
Spigot/Socket	Zinc Downpipe	100
Spigot	Old Plastic Pipe (DDR)	100
Spigot	Skolan dB	100
Spigot	Eternit Fibre Cement	100
Socket	Eternit Fibre Cement	70



B
+
C

Pipe	DN
Geberit Silent db20	70
Geberit PE	70
Geberit Silent PP	70
HT	70
Raupiano Plus	70
Zinc Downpipe	76

Spigot/Socket	Pipe	DN
Spigot	Geberit PE	90
Spigot	Geberit Silent PP	90
Spigot	Old Plastic Pipe (DDR)	90
Spigot	HT	90
Spigot	Raupiano Plus	90
Spigot	Loro X	90

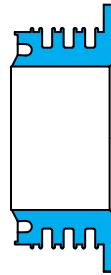


A
+
B

Pipe	DN
Geberit PE	50
Geberit Silent PP	50
HT	50
Raupiano Plus	50
Zinc Downpipe	50



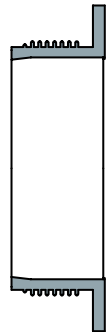
Spigot/Socket	Pipe	DN
Socket	HT	70
Socket	Raupiano Plus	70
Socket	Geberit Silent PP	70
Spigot/Socket	Zinc Downpipe	76
Spigot	Cast Iron SML	80
Socket	Loro X	70
Socket	Eternit Fibre Cement	50



A

Pipe	DN
Geberit PE	50
Geberit Silent PP	50
HT	50
Raupiano Plus	50
Zinc Downpipe	50

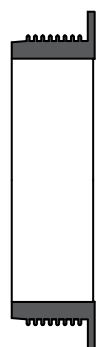
Spigot/Socket	Pipe	DN
Spigot	Geberit PE	90
Spigot	Geberit Silent PP	90
Spigot	Old Plastic Pipe (DDR)	90
Spigot	HT	90
Spigot	Raupiano Plus	90
Spigot	Loro X	90



B

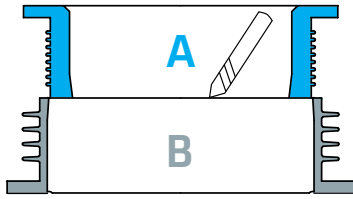
Pipe	DN
Geberit Silent db20	70
Geberit PE	70
Geberit Silent PP	70
HT	70
Raupiano Plus	70
Zinc Downpipe	76

Spigot/Socket	Pipe	DN
Spigot	Loro X	100
Spigot	Geberit Silent db20	100
Spigot	Cast Iron GGG	100
Spigot/Socket	Zinc Downpipe	100
Spigot	Old Plastic Pipe (DDR)	100
Spigot	Skolan dB	100
Spigot	Eternit Fibre Cement	100
Socket	Eternit Fibre Cement	70



C

Pipe	DN
Cast Iron SML	80

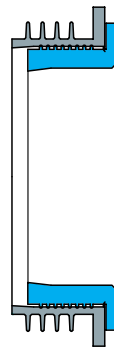


MULTI PIPE CONNECTOR MKA 100/105 | 90/75

Article-No. 500006

COMBINATIONS

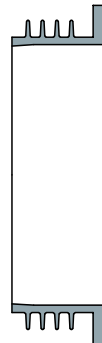
Spigot/Socket	Pipe	DN
Spigot	Geberit PE	100
Spigot	Geberit Silent PP	100
Spigot	Cast Iron SML	100
Spigot	Cast Iron GA	100
Spigot	HT	100
Spigot	Raupiano Plus	100



A
+
B

Pipe	DN
Geberit Silent db20	70
Geberit PE	70
Geberit Silent PP	70
HT	70
Raupiano Plus	70
Zinc Downpipe	76

Spigot/Socket	Pipe	DN
Spigot	Geberit PE	100
Spigot	Geberit Silent PP	100
Spigot	Cast Iron SML	100
Spigot	Cast Iron GA	100
Spigot	HT	100
Spigot	Raupiano Plus	100



B

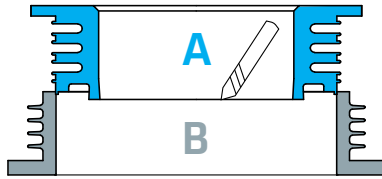
Pipe	DN
Geberit Silent db20	90
Geberit PE	90
Geberit Silent PP	90
HT	90
Raupiano Plus	90

Spigot/Socket	Pipe	DN
Spigot	Cast Iron GGG	80
Socket	HT	90
Socket	Geberit Silent PP	90
Socket	Skolan db	90



A

Pipe	DN
Geberit Silent db20	70
Geberit PE	70
Geberit Silent PP	70
HT	70
Raupiano Plus	70
Zinc Downpipe	76

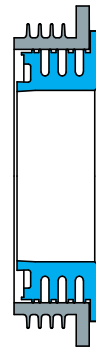


MULTI PIPE CONNECTOR MKA 130/123 | 110/75

Article-No. 500007

COMBINATIONS

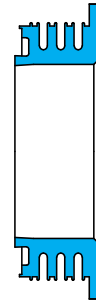
Spigot/Socket	Pipe	DN
Spigot	Geberit Silent db20	125
Socket	Cast Iron GA	100
Spigot	Skolan dB	125
Socket	HT	125
Socket	Raupiano Plus	125
Socket	Geberit Silent PP	125
Spigot	Eternit Fibre Cement	125
Spigot	Cast Iron GGG	125
Spigot	Cast Iron SML	125
Spigot	Loro X	125
Spigot	Cast Iron GA	125



A
+
B

Pipe	DN
Geberit Silent db20	70
Geberit PE	70
Geberit Silent PP	70
HT	70
Raupiano Plus	70
Zinc Downpipe	76

Spigot/Socket	Pipe	DN
Socket	HT	100
Socket	Raupiano Plus	100
Socket	Geberit Silent PP	100
Socket	Skolan dB	100
Spigot	Stainless Steel Europipe	100



A

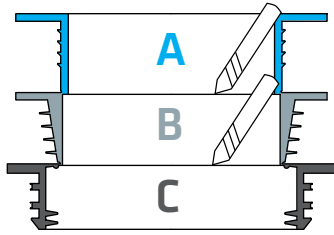
Pipe	DN
Geberit Silent db20	70
Geberit PE	70
Geberit Silent PP	70
HT	70
Raupiano Plus	70
Zinc Downpipe	76

Spigot/Socket	Pipe	DN
Spigot	Geberit Silent db20	125
Socket	Cast Iron GA	100
Spigot	Skolan dB	125
Socket	HT	125
Socket	Raupiano Plus	125
Socket	Geberit Silent PP	125
Spigot	Eternit Fibre Cement	125
Spigot	Cast Iron GGG	125
Spigot	Cast Iron SML	125
Spigot	Loro X	125
Spigot	Cast Iron GA	125



B

Pipe	DN
Geberit Silent db20	100
Skolan dB	100
Geberit PE	100
Geberit Silent PP	100
HT	100
Raupiano Plus	100
Cast Iron SML	100

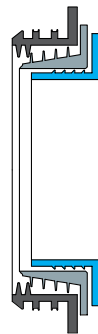


MULTI PIPE CONNECTOR MKA 150 | 125/110

Article-No. 500008

COMBINATIONS

Spigot/Socket	Pipe	DN
Spigot	Geberit PE	150
Spigot	Geberit Silent PP	150
Spigot	Skolan dB	150
Spigot	HT	150
Spigot	Raupiano Plus	150
Spigot/Socket	Zinc Downpipe	150
Spigot	Eternit Fibre Cement	150
Spigot	Cast Iron GA	150
Socket	Cast Iron GA	125
Spigot	Cast Iron SML	150
Spigot	Cast Iron GGG	150



A
+
B
+
C

Pipe	DN
Geberit Silent db20	100
Skolan dB	100
Geberit PE	100
Geberit Silent PP	100
HT	100
Raupiano Plus	100
Cast Iron SML	100

Spigot/Socket	Pipe	DN
Spigot	Geberit PE	150
Spigot	Geberit Silent PP	150
Spigot	Skolan dB	150
Spigot	HT	150
Spigot	Raupiano Plus	150
Spigot/Socket	Zinc Downpipe	150
Spigot	Eternit Fibre Cement	150
Spigot	Cast Iron GA	150
Socket	Cast Iron GA	125
Spigot	Cast Iron SML	150
Spigot	Cast Iron GGG	150



C

Pipe	DN
Geberit Silent db20	125
Skolan dB	125
Geberit PE	125
Geberit Silent PP	125
HT	125
Raupiano Plus	125
Cast Iron SML	125

Spigot/Socket	Pipe	DN
Socket	Skolan dB	125



A
+
B

Pipe	DN
Geberit Silent db20	100
Skolan dB	100
Geberit PE	100
Geberit Silent PP	100
HT	100
Raupiano Plus	100
Cast Iron SML	100



The right solution always to hand!

MULTI PIPE CONNECTOR KIT MHR

Article-No. 500113

The Multi Pipe Connector Kit consists of 6 Multi Pipe Connectors which offer solutions when connecting pipe systems within 32 - 130 mm diameter.

The Multi Pipe Connector Kit is the ideal basic equipment for every workshop van. The right solution always to hand! The connection can be made immediately and the site work can continue without delay.



KIT RANGE

The Multi Pipe Connector Kit consists of the following 6 Multi Pipe Connectors:



MKA 50 | 40/32

Article-No. 500002



MKA 64/58 | 50/40

Article-No. 500003



MKA 75/70 | 50/40

Article-No. 500004



MKA 100/105 | 90/75

Article-No. 500006



MKA 130/123 | 110/75

Article-No. 500007



MKA 90/83 | 75/50

Article-No. 500005



PRODUCT RANGE

ADAPTOR COUPLING MAC							
Article Number	Reference	A Size Range (mm)	B Size Range (mm)	L Length (mm)	resistant to (bar)	Nm	Weight (kg)
500009	MAC 0401	32 - 40	24 - 32	64	0,6	3	0,10
500010	MAC 0501	40 - 50	24 - 32	65	0,6	3	0,10
500011	MAC 0502	40 - 50	32 - 40	64	0,6	3	0,10
500012	MAC 0632	53 - 63	32 - 40	56	0,6	3	0,10
500013	MAC 0633	53 - 63	40 - 50	85	0,6	3	0,20
500014	MAC 0893	75 - 89	40 - 50	95	0,6	3	0,40
500015	MAC 0894	75 - 89	53 - 63	95	0,6	3	0,25
500016	MAC 1153	100 - 115	40 - 50	95	0,6	3	0,45
500017	MAC 1154	100 - 115	53 - 63	95	0,6	3	0,30
500018	MAC 1155	100 - 115	75 - 89	95	0,6	3	0,45
500019	MAC 1251	110 - 125	80 - 95	120	0,6	6	0,60
500020	MAC 1252	110 - 125	100 - 115	120	0,6	6	0,60
500021	MAC 1360	121 - 136	75 - 89	100	0,6	6	0,55
500022	MAC 1361	121 - 136	80 - 95	120	0,6	6	0,65
500023	MAC 1362	121 - 136	100 - 115	102	0,6	6	0,60
500024	MAC 1363	121 - 136	110 - 125	120	0,6	6	0,60
500025	MAC 1451	130 - 145	95 - 110	120	0,6	6	0,50
500026	MAC 1452	130 - 145	110 - 125	120	0,6	6	0,65
500027	MAC 1501	135 - 150	100 - 115	120	0,6	6	0,45
500028	MAC 1602	144 - 160	110 - 125	120	0,6	6	0,75
500029	MAC 1603	144 - 160	121 - 136	120	0,6	6	0,75
500030	MAC 1701	155 - 170	100 - 115	120	0,6	6	0,95
500031	MAC 1702	155 - 170	110 - 125	120	0,6	6	0,75
500032	MAC 1703	155 - 170	130 - 145	150	0,6	6	0,75
500033	MAC 1801	160 - 180	100 - 115	150	0,6	6	1,00
500034	MAC 1802	160 - 180	110 - 125	150	0,6	6	1,10
500035	MAC 1805	160 - 180	155 - 170	120	0,6	6	1,25
500036	MAC 1922	170 - 192	110 - 125	120	0,6	6	0,85
500037	MAC 1923	170 - 192	121 - 136	120	0,6	6	0,85
500038	MAC 1924	170 - 192	144 - 160	155	0,6	6	0,85
500039	MAC 1991	180 - 200	100 - 115	150	0,6	6	1,15
500040	MAC 1993	180 - 200	121 - 136	150	0,6	6	1,20
500041	MAC 2000	180 - 200	130 - 145	150	0,6	6	1,35
500042	MAC 2001	180 - 200	155 - 170	150	0,6	6	1,30
500043	MAC 2002	180 - 200	160 - 180	150	0,6	6	1,30

Larger sizes see Mücher-Civils.



Drain Coupling

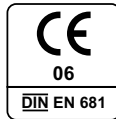
MDC

- + Coupling for same outside diameters
- + For above and below ground
- + External compression seal
- + Resistant to 0.6 bar

Drain Coupling MDC - for the external connection of all pipe systems with same outside diameters

The Drain Coupling MDC connects all plain ended pipes with same outside diameters and materials.

The Drain Coupling MDC can be used for applications above and below ground as well as inside and outside of buildings.



INSTALLATION



Position plain ended pipes.

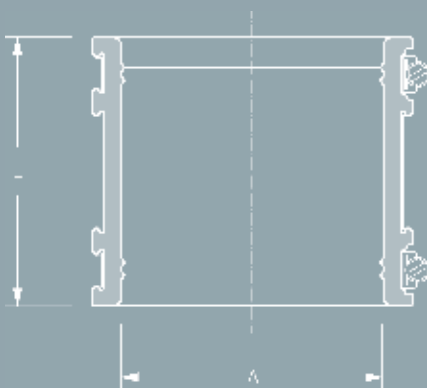


Slide coupling over one plain end.



Center coupling over joint. Tighten clamps.

DESCRIPTION



TECHNICAL SPECIFICATION

Drain Coupling MDC for the external connection of all plain ended pipe systems with same outside diameters for applications above and below ground as well as inside and outside of buildings.

Pipe 1 DN/Material _____
 Pipe 2 DN/Material _____
 Article Number _____
 ___ Qty ___ Price/Unit ___ Total

Manufacturer: MÜCHER DICHTUNGEN®, D-50226 Frechen, T +49 2234 928 03-0, F-55
 Pressure Tightness: 0.6 bar water / -0.3 bar vacuum
 Jetting Resistance: 120 bar
 Sealing Material: EPDM or Nitrile (NBR) rubber with lock in place profile according to DIN EN 681-1
 Stainless Steel: AISI 304/1.4301, alternatively AISI 316/1.4404 according to DIN EN 10088-2
 Temperature Resistance: -40°C to +120°C, temporary max. temperature +160°C
 Standard/Approval: DIN EN 295-4



PRODUCT RANGE

DRAIN COUPLING MDC						
Article Number	Reference	A Size Range (mm)	L Length (mm)	resistant to (bar)	Nm	Weight (kg)
500044	MDC 32	24 - 32	64	0,6	3	0,10
500045	MDC 40	32 - 40	64	0,6	3	0,10
500046	MDC 50	42 - 50	64	0,6	3	0,10
500123	MDC 56	50 - 56	70	0,6	3	0,10
500047	MDC 65	55 - 65	85	0,6	3	0,20
500048	MDC 75	65 - 75	90	0,6	3	0,25
500049	MDC 89	75 - 89	90	0,6	3	0,35
500132	MDC 95	85 - 95	90	0,6	6	0,40
500050	MDC 100	85 - 100	100	0,6	6	0,40
500051	MDC 115	100 - 115	120	0,6	6	0,45
500052	MDC 120	105 - 120	106	0,6	6	0,35
500124	MDC 125	110 - 125	120	0,6	6	0,40
500053	MDC 137	120 - 137	120	0,6	6	0,40
500054	MDC 150	125 - 150	120	0,6	6	0,45
500055	MDC 162	137 - 162	120	0,6	6	0,50
500125	MDC 165	150 - 165	105	0,6	6	0,50
500056	MDC 175	150 - 175	120	0,6	6	0,55
500057	MDC 190	165 - 190	150	0,6	6	0,55
500058	MDC 200	175 - 200	150	0,6	6	0,55

Larger sizes see Mücher-Civils.



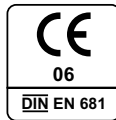
Coupling

CANADA PLUS MSC

- + For all pipe materials
- + For above and below ground
- + For usage with bushes
- + Resistant to 2.5 bar

Coupling Canada Plus MSC – for the external connection of all pipe systems with different or same outside diameters
 The Coupling Canada Plus MSC connects all plain ended pipes within same or different dimensions and is compensating differences in outside diameters of max. 12 mm. Larger differences will require the use of bushes.

The Coupling Canada Plus MSC can be used for applications above and below ground as well as inside and outside of buildings.



INSTALLATION



Position plain ended pipes.

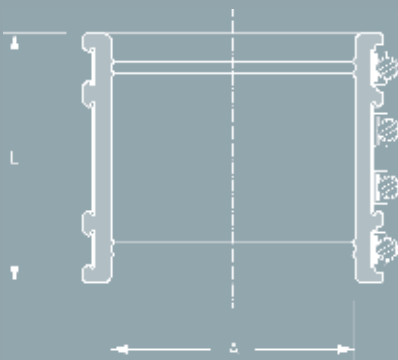


Slide coupling over one plain end.



Center coupling over joint. Tighten clamps and shear band reciprocally.

DESCRIPTION



TECHNICAL SPECIFICATION

Coupling Canada Plus MSC for the external connection of all plain ended pipe materials with different or same outside diameters for applications above and below ground as well as inside and outside of buildings. Differences in outside diameters of more than 12 mm will require the use of bushes.

Pipe 1	DN/Material	_____
Pipe 2	DN/Material	_____
Article Number		_____
	Qty	Price/Unit Total

Manufacturer:	MÜCHER DICHTUNGEN®, D-50226 Frechen, T +49 2234 928 03-0, F-55
Pressure Tightness:	2.5 bar water / -0.3 bar vacuum
Jetting Resistance:	120 bar
Corrosion Resistance:	TOX®-Technology
Sealing Material:	EPDM or Nitrile (NBR) rubber with lock in place profile according to DIN EN 681-1
Stainless Steel:	AISI 304/1.4301, alternatively AISI 316/1.4404 according to DIN EN 10088-2
Temperature Resistance:	-40°C to +120°C, temporary max. temperature +160°C
Standard/Approval:	DIN EN 295-4



PRODUCT RANGE

COUPLING CANADA PLUS MSC FOR ALL PIPE MATERIALS						
Article Number	Reference	A Size Range (mm)	L Length (mm)	resistant to (bar)	Nm	Weight (kg)
500136	Canada Plus MSC 50	42-50	64	2,5	6	0,1
500059	Canada Plus MSC 65	55-65	85	2,5	6	0,3
500060	Canada Plus MSC 75	65-75	90	2,5	6	0,3
500061	Canada Plus MSC 89	75-89	90	2,5	6	0,4
500134	Canada Plus MSC 95	85-95	90	2,5	6	0,5
500062	Canada Plus MSC 100	85-100	100	2,5	6	0,5
500063	Canada Plus MSC 115	100-115	120	2,5	6	0,8
500064	Canada Plus MSC 120	105-120	120	2,5	6	0,9
500135	Canada Plus MSC 125	110-125	120	2,5	6	0,9
500065	Canada Plus MSC 137	120-137	120	2,5	6	0,9
500066	Canada Plus MSC 150	125-150	120	2,5	6	1,0
500067	Canada Plus MSC 162	137-162	120	2,5	6	1,1
500068	Canada Plus MSC 175	150-175	120	2,5	6	1,2
500069	Canada Plus MSC 190	165-190	150	2,5	6	1,6
500070	Canada Plus MSC 200	175-200	150	2,5	10	1,7

Larger sizes see Mücher-Civils.



Multi-Flexible-Coupling

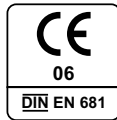
GENIUS

- + One coupling for all pipe materials
- + For above and below ground
- + With integrated bushes
- + Resistant to 2.5 bar

Multi-Flexible-Coupling GENIUS – for the connection of all pipe systems with different or same outside diameters

The Multi-Flexible-Coupling GENIUS with integrated bushes joints all plain ended pipes within one dimension and can be used inside and outside of buildings.

The right solution always to hand: What ever pipe material needs to be jointed within one dimension, the GENIUS will always be the right solution for the contractor.



INSTALLATION



Bush at smaller pipe remains integrated – fold out and remove bush at larger pipe.

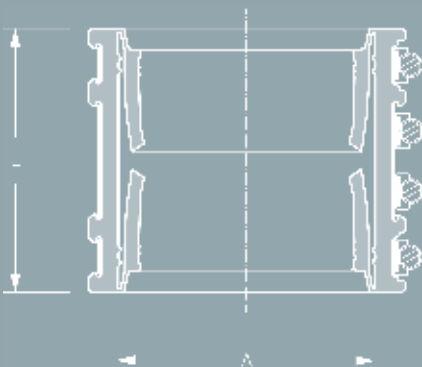


Slide GENIUS over larger pipe.



Push smaller pipe into GENIUS and tighten clamps and shear band reciprocally.

DESCRIPTION



TECHNICAL SPECIFICATION

Multi-Flexible-Coupling GENIUS with integrated bushes for the connection of plain ended pipe materials within one dimension with different or same outside diameters.

Pipe 1 DN/Material _____
 Pipe 2 DN/Material _____
 Article Number _____
 _____ Qty _____ Price/Unit _____ Total

Manufacturer: MÜCHER DICHTUNGEN®, D-50226 Frechen, T +49 2234 928 03-0, F-55
 Pressure Tightness: 2.5 bar water / -0.3 bar vacuum
 Jetting Resistance: 120 bar
 Corrosion Resistance: TOX®-Technology
 Sealing Material: EPDM or Nitrile (NBR) rubber with lock in place profile according to DIN EN 681-1
 Stainless Steel: AISI 304/1.4301, alternatively AISI 316/1.4404 according to DIN EN 10088-2
 Temperature Resistance: -40°C to +120°C, temporary max. temperature +160°C
 Standard/Approval: Abz Z42.5-373



PRODUCT RANGE

MULTI-FLEXIBLE-COUPLING GENIUS						
Article Number	Reference	A Size Range (mm)	L Length (mm)	resistant to (bar)	Nm	Weight (kg)
500071	GENIUS DN 100	108 - 137	120	2,5	10,0	1,30
500072	GENIUS DN 125	123 - 162	120	2,5	10,0	1,50
500073	GENIUS DN 150	158 - 192	150	2,5	10,0	2,40

Larger sizes see Mücher-Civils.

APPLICATION SCHEDULES

DN 100	GENIUS-OPTION Size Range (mm)	DN 125	GENIUS-OPTION Size Range (mm)	DN 150	GENIUS-OPTION Size Range (mm)
Clay — Clay	125-137 125-137	Clay — Clay	150-162 150-162	Clay — Clay	176-192 176-192
PP/PVC/PE GRP Fib. Cement Ductile Iron Cast Iron Ultra-Rib/ Twinwall	Clay 108-125 125-137	PP/PVC/PE GRP Fib. Cement Ductile Iron Cast Iron Ultra-Rib/ Twinwall	Clay 123-150 150-162	PP/PVC/PE GRP Fib. Cement Ductile Iron Cast Iron Ultra-Rib/ Twinwall	Clay 158-176 176-192
PP/PVC/PE GRP Fib. Cement Ductile Iron Cast Iron Ultra-Rib/ Twinwall	PP/PVCu/PE GRP Fib. Cement Ductile Iron Cast Iron Ultra-Rib/ Twinwall	PP/PVC/PE GRP Fib. Cement Ductile Iron Cast Iron Ultra-Rib/ Twinwall	PP/PVCu/PE GRP Fib. Cement Ductile Iron Cast Iron Ultra-Rib/ Twinwall	PP/PVC/PE GRP Fib. Cement Ductile Iron Cast Iron Ultra-Rib/ Twinwall	PP/PVCu/PE GRP Fib. Cement Ductile Iron Cast Iron Ultra-Rib/ Twinwall



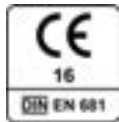
FLEXIBLE TEE MFA

- + 90° Tee Junction to existing drains
- + For horizontal and vertical installations
- + Reliable and durable solution
- + Resistant to 0.5 bar

Flexible Tee - for the connection to existing drains

The Flexible Tee connects new to existing drains and is suitable for flush-mounting and non-buried pipe connections.

The Flexible Tee is made from a durable EPDM rubber and has a noise reducing impact on downpipes.



INSTALLATION

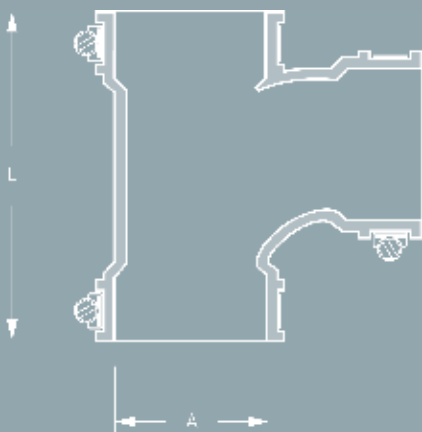


Cut off and remove pipe section. Loosen pipe support.

Position Flexible Tee in between plain ended pipes.

Insert plain ended pipes, tighten clamps and fix pipe support.

DESCRIPTION



TECHNICAL SPECIFICATION

Flexible Tee for the 90° Connection to existing drains.

Pipe 1	DN/Material	_____
Pipe 2	DN/Material	_____
Pipe 2	DN/Material	_____
Article Number		_____
	Qty	Price/Unit Total

Manufacturer:	MÜCHER DICHTUNGEN®, D-50226 Frechen, T +49 2234 928 03-0, F-55
Pressure Tightness:	0.6 bar water / -0.3 bar vacuum
Sealing Material:	EPDM rubber according to DIN EN 681-1
Stainless Steel:	AISI 304/1.4301, alternatively AISI 316/1.4404 according to DIN EN 10088-2
Temperature Resistance:	-40°C to +120°C, temporary max. temperature +160°C
Standard/Approval:	DIN EN 681-1



PRODUCT RANGE

FLEXIBLE TEE MFA						
Article Number	Reference	A Size Range (mm)	L Length (mm)	resistant to (bar)	Nm	Weight (kg)
500074	Flexible Tee MFA 50	40 - 50	125	0,6	6	0,20
500075	Flexible Tee MFA 60	50 - 60	125	0,6	6	0,30
500076	Flexible Tee MFA 90	78 - 90	200	0,6	6	0,60
500077	Flexible Tee MFA 118	106 - 118	245	0,6	6	1,10



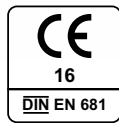
FLEXIBLE ELBOW MFB

- + 90° Elbow
- + For horizontal and vertical installations
- + Reliable and durable solution
- + Resistant to 0.5 bar

Flexible Elbow - for the repair of existing drains

The Flexible Elbow is used for the repair of existing drains and is suitable for flush-mounting and non-buried pipe connections.

The Flexible Elbow is made from a durable EPDM rubber and has a noise reducing impact on downpipes.



INSTALLATION



Cut off and remove pipe section. Loosen pipe support.



Position Flexible Elbow in between plain ended pipes.



Insert plain ended pipes, tighten clamps and fix pipe support.

DESCRIPTION



TECHNICAL SPECIFICATION

Flexible Elbow 90° for the repair of existing drains.

Pipe 1	DN/Material	_____
Pipe 2	DN/Material	_____
Article Number	_____	_____
	Qty	Price/Unit Total

Manufacturer:	MÜCHER DICHTUNGEN®, D-50226 Frechen, T +49 2234 928 03-0, F-55
Pressure Tightness:	0.6 bar water / -0.3 bar vacuum
Sealing Material:	EPDM rubber according to DIN EN 681-1
Stainless Steel:	AISI 304/1.4301, alternatively AISI 316/1.4404 according to DIN EN 10088-2
Temperature Resistance:	-40°C to +120°C, temporary max. temperature +160°C
Standard/Approval:	DIN EN 681-1

PRODUCT RANGE 

FLEXIBLE ELBOW MFB						
Article Number	Reference	A Size Range (mm)	L Length (mm)	resistant to (bar)	Nm	Weight (kg)
500078	Flexible Elbow MFB 50	40 - 50	95	0,6	6	0,10
500079	Flexible Elbow MFB 60	50 - 60	140	0,6	6	0,20
500139	Flexible Elbow MFB 75	65 - 75	155	0,6	6	0,30
500080	Flexible Elbow MFB 90	78 - 90	190	0,6	6	0,50
500081	Flexible Elbow MFB 118	106 - 118	210	0,6	6	0,80



END CAP MEK

- + Sealing of pipe ends
- + For use inside and outside of buildings
- + Clamps in stainless steel
- + Resistant to 0.6 bar

End Cap - for the long and short term sealing of pipe ends

The End Cap is used for the long and short term sealing of pipe ends to prevent ingress of dirt or water.

The End Cap can be used inside and outside of building.



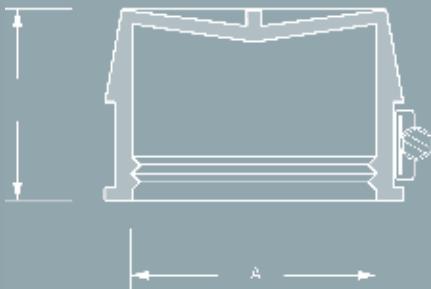
INSTALLATION



Slide End Cap over pipe end.

Tighten clamps.

DESCRIPTION



TECHNICAL SPECIFICATION

End Cap for the long and short term sealing of pipe ends.

Pipe DN/Material _____

Article Number _____
 Qty Price/Unit Total

Manufacturer: MÜCHER DICHTUNGEN®, D-50226 Frechen,
 T +49 2234 928 03-0, F-55

Pressure Tightness: 0.6 bar water

Sealing Material: EPDM rubber according to DIN EN 681-1

Stainless Steel: AISI 304/1.4301, alternatively AISI 316/1.4404 according to DIN EN 10088-2

Temperature Resistance: -40°C to +120°C, temporary max. temperature +160°C

Standard/Approval: DIN EN 681-1

PRODUCT RANGE 

END CAP MEK						
Article Number	Reference	A Size Range (mm)	L Length (mm)	resistant to (bar)	Nm	Weight (kg)
500082	End Cap MEK 1	45 - 55	40	0,6	6	0,10
500083	End Cap MEK 2	56 - 66	40	0,6	6	0,10
500084	End Cap MEK 3	80 - 90	40	0,6	6	0,20
500085	End Cap MEK 4	105 - 115	40	0,6	6	0,20
500086	End Cap MEK 5	130 - 140	40	0,6	6	0,20
500087	End Cap MEK 6	155 - 165	40	0,6	6	0,30



ROLL-RING MRR

- + Connection to sockets without seal
- + Socket connection remains
- + Reliable and durable solution
- + Resistant to 0.5 bar

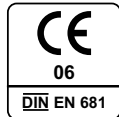
Roll-Ring – for the connection of spigots from all pipe materials to sockets without seal

The Roll-Ring connects spigots from all materials to sockets without seal (e.g. clay or concrete).

By using the Roll-Ring there is no need for cutting off the socket and connecting with a flexible coupling.

The Roll-Ring is individually produced to the customer's requirements, to provide the right compression for effective sealing.

DIN 4060



INSTALLATION



Do not use lubricant.

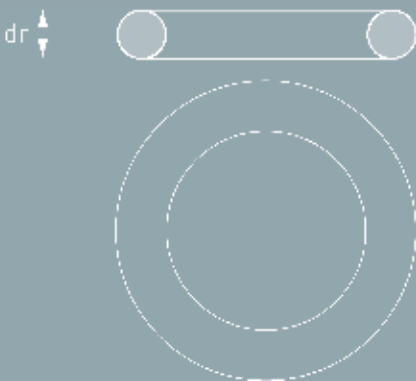


Position Roll-Ring in front of socket.



Push spigot into socket.

DESCRIPTION



TECHNICAL SPECIFICATION

Roll-Ring for the connection of spigots from all pipe materials to sockets without seal.

Pipe 1 DN/Material _____
 Socket Internal Ø (mm) _____
 Pipe 2 DN/Material _____
 Outside Ø (mm) _____

Article Number _____
 _____ Qty _____ Price/Unit _____ Total

Manufacturer: MÜCHER DICHTUNGEN®, D-50226 Frechen,
 T +49 2234 928 03-0, F-55

Pressure Tightness: 0.5 bar water / -0.3 bar vacuum

Sealing Material: SBR rubber according to DIN EN 681-1

Temperature Resistance: -40°C to +80°C, temporary max. temperature +130°C

Standard/Approval: DIN EN 681-1



PRODUCT RANGE

ROLL-RING MRR								
Article Number	Reference	DN	Pipe Material Spigot	Outside Ø (mm)	Internal Socket Ø (mm)	dr String Strength (mm)	resistant to (bar)	Weight (kg)
500088	Rollring MRR Clay DN 100 16 mm	100	Clay	131	150 - 160	16	0,5	0,10
500089	Rollring MRR Clay DN 100 18 mm	100	Clay	131	151 - 161	18	0,5	0,10
500090	Rollring MRR Clay DN 100 20 mm	100	Clay	131	152 - 162	20	0,5	0,10
500091	Rollring MRR Clay DN 100 22 mm	100	Clay	131	153 - 163	22	0,5	0,10
500092	Rollring MRR SML/PVC DN 100 32 mm	100	SML/PVC	110	156 - 162	32	0,5	0,30
500093	Rollring MRR Clay DN 125 18 mm	125	Clay	159	178 - 190	18	0,5	0,10
500094	Rollring MRR Clay DN 125 20 mm	125	Clay	159	179 - 191	20	0,5	0,10
500095	Rollring MRR Clay DN 125 22 mm	125	Clay	159	180 - 192	22	0,5	0,10
500096	Rollring MRR Clay DN 125 24 mm	125	Clay	159	181 - 193	24	0,5	0,20
500097	Rollring MRR SML DN 125 34 mm	125	SML	135	184 - 190	34	0,5	0,30
500098	Rollring MRR PVC DN 125 43 mm	125	PVC	125	184 - 190	43	0,5	0,50
500099	Rollring MRR Clay DN 150 20 mm	150	Clay	186	207 - 219	20	0,5	0,10
500100	Rollring MRR Clay DN 150 22 mm	150	Clay	186	208 - 220	22	0,5	0,20
500101	Rollring MRR Clay DN 150 24 mm	150	Clay	186	209 - 221	24	0,5	0,20
500102	Rollring MRR Clay DN 150 26 mm	150	Clay	186	210 - 222	26	0,5	0,30
500103	Rollring MRR FZ DN 150 34 mm	150	FZ	176	214 - 222	34	0,5	0,40
500104	Rollring MRR SML/PVC DN 150 40 mm	150	SML/PVC	160	215-223	38	0,5	0,50
500105	Rollring MRR Clay DN 200 22 mm	200	Clay	242	265 - 279	22	0,5	0,20
500106	Rollring MRR Clay DN 200 24 mm	200	Clay	242	266 - 280	24	0,5	0,30
500107	Rollring MRR Clay DN 200 26 mm	200	Clay	242	267 - 281	26	0,5	0,30
500108	Rollring MRR SML DN 200 46 mm	200	SML	210	275 - 283	46	0,5	1,10
500109	Rollring MRR PVC DN 200 51 mm	200	PVC	200	274 - 282	51	0,5	1,10

Further sizes are available on request. Roll-Rings are available in string strengths 10-51 mm.

LUBRICANT MGM

- + Jointing forces are minimised
- + Compatibility with other sealing materials
- + For plastic pipes
- + Various package sizes



Lubricant - minimizing the jointing forces for plastic pipe laying
Lubricant is used to minimize the jointing forces when laying plastic pipes.

Lubricant is compatible with other sealing materials.



INSTALLATION



Clean socket and spigot.

Apply lubricant to socket and spigot.

Push pipes together.

TECHNICAL SPECIFICATION

Lubricant for minimizing the jointing forces for plastic pipe laying.

Pipe Material _____

Package Size _____

Article Number _____

___ Qty ___ Price/Unit ___ Total

Manufacturer: MÜCHER DICHTUNGEN®, D-50226 Frechen,
T +49 2234 928 03-0, F-55

Scope of Application: Plastic Pipes (White)

Packaging Size: White 250 g Tube, 500 g Tube, 1 kg Can

Standard/Approval: Safety Data Sheet (EU) No. 1907/2006



PRODUCT RANGE

LUBRICANT MGM				
Article Number	Reference	Pipe Material	Content Packaging	Weight (kg)
500110	Lubricant MGM white 250 ml	for plastic pipes	250 ml Tube	0,30
500111	Lubricant MGM white 500 ml	for plastic pipes	500 ml Tube	0,50
500112	Lubricant MGM white 1 kg	for plastic pipes	1 kg Can	1,10

VARIOUS PIPE MATERIALS 

DN	PP / PVC	SML / BML	GGG	GRP	ULTRA RIB 1 AND 2	CONCRETE reinforced (approx.)	CONCRETE (approx.)	Asbestos Cement	ETERNIT FZ KL. A	ETERNIT FZ KL. B
100	110	110	118	-	-	-	-	116	-	124
125	125	135	144	-	-	-	-	141	-	149
150	160	160	170	168	170	-	200	168	-	172/176
200	200	210	222	220	225	-	260	220	-	224/230
250	250	274	274	272	280	-	310	273	-	278/284
300	315	326	326	324	335	440	380	328	-	338
350	355	-	378	376	-	-	-	384	-	392
400	400	429	429	427	450	550	490	432	442	448
450	450	-	480	478	-	-	-	486	496	502
500	500	532	532	530	560	660	610	540	552	556
600	630	635	635	616	-	770	730	646	658	664
700	710	-	738	718	-	880	840	750	768	778
800	800	-	842	820	-	1000	960	858	876	888
900	900	-	945	924	-	1120	-	963	982	998
1000	1000	-	1048	1026	-	1240	1190	1068	1090	1108
1100	-	-	1152	1099	-	1360	-	-	-	-
1200	1200	-	1255	1229	-	1480	-	1281	1306	1328

(All dimensions in mm)

CLAY PIPES, ACCORDING TO DIN EN 295 

NORMAL STRENGTH				(All dimensions in mm)
DN	DIN 1230	STG-Keramo	STG-Keramo Jacking Pipes dM	
100	131 +/- 3	131 +/- 1,5	-	
125	159 +/- 3,5	159 +/- 2	-	
150	186 +/- 4	186 +/- 2	213 +0/- 4	
200	242 +/- 5	242 +/- 5	276 +0/- 4	
250	296 +/- 6	299 +/- 6	361 +0/-8	
300	350 +/- 7	355 +/- 7	417 +0/-10	
350	404 +/- 7	417 +/- 7	-	
400	460 +/- 8	486 +/- 8	557 +0/-10	
450	524 +/- 8	-	-	
500	581 +/- 9	581 +/- 9	644 +0/-10	
600	687 +/- 12	687 +/- 12	765 +0/-14	

Technical changes reserved – May 2022

HIGH STRENGTH		
DN	DIN 1230	STG-Keramo
100	-	-
125	-	-
150	-	-
200	262 +/- 5	254 +/- 5
250	318 +/- 6	318 +/- 6
300	374 +/- 7	376 +/- 7
350	430 +/- 7	-
400	490 +/- 7	492 +/- 8
450	548 +/- 8	-
500	607 +/- 9	609 +/- 9
600	721 +/- 12	725 +/-12
700	831 +/- 15	832 +/- 12
800	941 +/- 17	932 +/- 12

(All dimensions in mm)



PIPE SYSTEMS

DN	Conel Drain	Fiber Cement	Friaphon	Geberit PE	Geberit Silent PP	Georg Fischer PE-HD	Georg Fischer Silenta Premium	Ductile Iron GA	Ductile Iron GGG
30	-	-	-	32	32	-	-	-	-
40	40	-	-	40	40	40	-	-	-
50	50	64	52	50	50	50	-	60	-
56	-	-	-	56	-	56	58	-	-
60	-	-	-	-	-	63	-	-	-
70	75	87	78	75	75	75	78	80	-
80	-	-	-	-	-	-	-	-	98
90	90	-	90	90	90	90	90	-	-
100	110	116	110	110	110	110	110	112	118
125	-	141	135	125	125	125	135	137	144
150	-	168	160	160	160	160	160	162	170

(All dimensions in mm)

PIPE SYSTEMS

DN	HT/HT Safe	Loro X	Pipelife Master 3	Polo-Kal NG	Raupiano Plus	Skolan dB	SML	Valsir HDPE	Wavin AS
30	32	32	32	32	-	-	-	32	-
40	40	42	40	40	40	-	48	40	-
50	50	53	50	50	50	-	58	50	-
56	-	-	-	-	-	58	-	56	58
60	-	-	-	-	-	-	-	63	-
70	75	73	75	75	75	78	78	75	78
80	-	89	-	-	-	-	83	-	-
90	90	-	-	90	90	90	-	90	90
100	110	102	110	110	110	110	110	110	110
125	125	133	125	125	125	135	135	125	135
150	160	159	160	160	160	160	160	160	160

Technical changes reserved – May 2022

(All dimensions in mm)



THE MÜCHER-COMMITMENT



GUIDANCE

You can trust us – we guide you the right way!
Both commercial and technical consultation have got the highest priority for Mücher.



DELIVERY

Ordered a.m. – supplied next day!



INNOVATION

It is our companies aim to develop new products and to improve and further develop the existing range of products through rivaling new and innovative technologies.



AVAILABILITY

100% availability creates confidence!
Our entire product range is stocked in bulk.



SECURITY

On the safe side with Mücher!
All our products comply with and exceed the requirements of the latest DIN and European standards as well as national and international approvals. If it says MÜCHER you can depend on a safe installation process for the installer.

MÜCHER DICHTUNGEN GmbH & Co. KG
Europaallee 43, 50226 Frechen, Germany

T +49 2234 928 03-0
F +49 2234 928 03-55
sales@muecher.com

www.muecher.com 

CIVILS

INDUSTRIAL

PLUMBING



MÜCHER
PRODUCT-FINDER