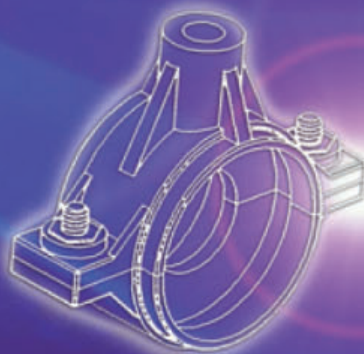
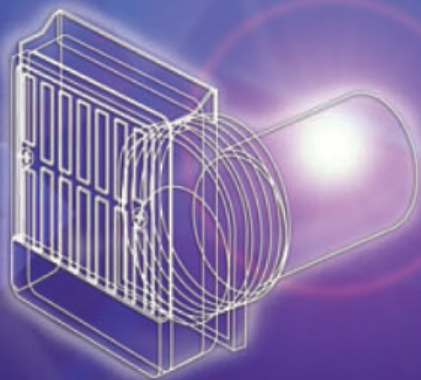
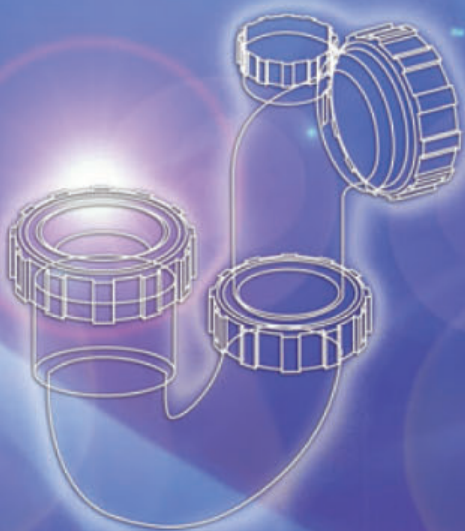
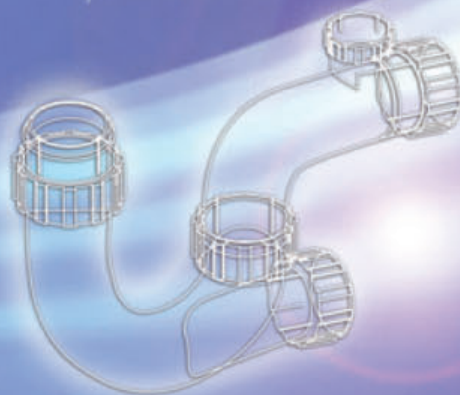


# Legend

*Trap Perfection*



## Contents / 目錄

<b>Introduction / 簡介</b> .....	1
<b>General Information / 一般資料</b> .....	2 - 5
<b>Product Range / 產品</b>	
Traps / 聚水器 .....	6 - 13
Floor Drains / 地漏 .....	14-18
Top Access 80mm Seal Resealing Gullies / 頂掀式80毫米水封防虹吸去水斗 .....	19-34
Nylon Pipe Clips for Copper Tubes / 銅管用尼龍喉碼 .....	35-37
Trap's Water Seal Replenishment System / 聚水器水封補給系統 .....	38-39
<b>Installation Guide / 安裝指引</b> .....	40-50
<b>Job Reference / 工作實例</b> .....	51-53

## Introduction / 簡介

Established in 1991, “*Legend*” products have been one of the best sellers for drainage systems and became the market leader in Hong Kong, Macau and China ever since.

Renowned by the innovative design and precise craftsmanship, *Legend* not only firstly incorporated the genuine 80mm water seal for the traps and anti-siphon valves as the norm in the local market, but also design and enhance the product ranges from time to time, such as Nylon Pipe Clips for copper pipes, Two-ways (Balcony) Floor Drains, Level Adjustable Floor Drains, Automatic Leveling Gullies and the most contemporary Trap's Water Seal Replenishment System®.

*Legend* select the supreme grade of raw materials from the foreign countries and inject the products with the state of the art molding machinery, which have gained high reputation from the end-users by *Legend* products' reliability and consistent performance. Besides, *Legend* have undertaken extensive research and development in purpose of continuous improvement in product design. *Legend* reserve the right to change the product specifications without any further notification.

“*Legend*”系列產品創立於1991年，發展至今已佔有相當的市場份額，並成為中國內地和港澳地區暢銷產品之一。

作為結合創新設計概念及高質工藝的現代排水系統產品，*Legend*不但為客戶提供設有80毫米水封深度及防虹吸裝置的各類型聚水器等標準化產品，也根據市場需求不斷開發具有獨創性及有經濟效益的新穎塑膠產品，例如銅管用尼龍喉碼、雙向(露台)排水地漏、可調節水平地漏、去水斗，及已廣泛使用的聚水器水封補給系統等。

*Legend*產品採用極優質之塑膠粒作原材料，配合極精密的模具機械注塑製成，其始終如一的優良表現已經贏得了廣大客戶的長期讚譽。此外，*Legend*在政策上銳意進行產品研究及開發，並保留產品規格有所變動的權利。

## Products / 產品

- Anti-Siphon Waste Traps  
防虹吸聚水器
- Top Access 80mm Seal Resealing Bath Trap with Overflow  
頂掀式80毫米水封防虹吸浴缸聚水器連滿水喉
- Top Access 80mm Seal Resealing Gullies  
頂掀式80毫米水封防虹吸去水斗
- Top Access 80mm Seal Resealing Gullies with Water Seal Replenishment inlet  
頂掀式80毫米水封防虹吸去水斗設水封補給管口
- Top Access 50mm Seal Resealing Gullies  
頂掀式50毫米水封防虹吸去水斗
- Floor Drains (Vertical, Horizontal and Two-Ways Grating)  
地漏(垂直漏格面、水平漏格面、雙向漏格面)
- Adjustable Vertical Grating Floor Drains  
可調節垂直漏格面地漏
- Brass-made Hopper Horizontal Grating Floor Drains with Variable Leveling Device  
可調節水平漏格面地漏(銅製地漏主體)
- Nylon Pipe Clips for the Plain/Plastic Coated Copper Tubes with/without Thermal Insulation Wrapping  
尼龍喉碼(銅管、包膠銅管、包保溫棉銅管適用)

## Standards / 標準

All *Legend* products shall comply with, where applicable, the following International Standards:-

所有*Legend* 產品均符合下列國際標準:-

- BS 3943-Specification for plastic waste traps
- BS 5255-Specification for thermoplastics waste pipe and fittings
- BS 4514-Specification for PVC-u soil and ventilating pipes, fittings and accessories
- BS EN 1329-Plastics piping systems for soil and waste discharge (low and high temperature) within the building structure – PVC-u
- BS EN 1455-Plastics piping systems for soil and waste discharge (low and high temperature) within the building structure – ABS
- BS EN 274-Waste fittings for sanitary appliances
- AS/NZS 1260-PVC pipes and fittings for drain, waste and vent applications

## Patents and Design Registrations / 專利註冊

A number of *Legend* products in this catalogue are subject of one or more of the following Registered Designs and Patents:-

本說明書中的部份產品已申請註冊設計及專利，編號如下：

- |                                  |            |                  |           |                |
|----------------------------------|------------|------------------|-----------|----------------|
| - Hong Kong Design Registrations |            |                  |           |                |
| 9900165.7                        | 9900166.9  | 0111289.5M001    |           | 0111289.5M002  |
| - China Design Registrations     |            |                  |           |                |
| 91301649.7                       | 91301650.0 | 01350752.4       |           | 01350753.2     |
| - U.K. Design Registrations      |            |                  |           |                |
| 2015658                          | 2015659    | 2104328          |           | 2104329        |
| - U.K. Patent                    |            | Hong Kong Patent |           | China Patent   |
| GB2397828                        | GB2406584  | HK1068382        | HK1153086 | 200410011758.1 |

## Technical Information / 技術資料

### ● Major Materials Used / 主要原材料

- PVC-u (unplasticised Polyvinyl Chloride) / 聚氯乙烯
- A.B.S. (Acrylonitrile Butadiene Styrene) / 丙烯晴-丁二烯-苯乙烯
- H.D.P.E (High Density Polyethylene) / 高密度聚乙烯
- PP-c (Polypropylene Copolymer) / 聚丙烯共聚
- Nylon (Polyamide) / 聚酰胺

### ● Quality Control / 品質控制

*Legend* adopt the stringent Quality Control procedures in manufacturing the products. Facilities and equipment in the plant are periodically calibrated and maintained to ensure the products' reliability. All *Legend* products will be tested by the independent laboratory in a routine basis.

*Legend*產品系列均經過嚴格的品質檢定程序，為了保證產品質量可靠，廠房的機器設備及注塑模具必須進行定期調校及維修保養，所有產品也必須接受獨立實驗室的定期檢驗測試。

### ● Colour / 顏色

Snowy White, Ivory White, Greyish Black and Metallic Silver.  
雪白色，象牙白色，灰黑色及金屬銀色均被採用。

### ● Temperature / 溫度

*Legend* choose the most proper materials for manufacturing the products in which the reasonable servicing temperature for some particular applications has been accounted. *Legend* plastic waste traps withstand the frost and hot water applications.

*Legend*採用各類適合的高質材料，產品均能達到其所需的工作溫度，一般而言塑膠聚水器可以經受霜凍及熱水。

### ● Chemical Resistance / 耐化學品屬性

Inert to all common chemicals used in the household.

產品能抵禦一般家居常用化學品的侵蝕。

### ● Durability and Weathering Property / 耐用性

*Legend* have formulated with special additives and plastic materials such as Nylon, ABS and PP-c that produce the products with good weathering resistance and higher temperature working environment. In general, *Legend* products are extrapolated to 50 years of shell life with accredited installation and normal servicing conditions. However, the weathering factors (direct UV exposure and prolonged high temperature) will inevitably affect the life span of the products to certain extent.

*Legend*產品具有靈活、輕便、耐壓的特點，尼龍、ABS、PP-c這類塑膠原材料具有相當理想的防侵蝕性。總體而言，一般產品在正常的使用下可以有大約50年壽命。但氣候條件(例如長期直接暴露在陽光或高溫情況下)會不可避免地影響產品的使用壽命。

# Legend

## Traps / 聚水器

**Legend** manufacture, unlike those traditional resealing traps with gurgling noise, a variety of quieter traps equipped with anti-siphon valve as the standard device allowing air to be drawn in the system through the valve, which neutralizes the negative pressure wherever the siphonic action is present. Injected by high temperature Polypropylene materials, **Legend** traps normally withstand long-term tensile forces, high impact, frost and hot water. Moreover, they are maintenance-free, virtually unbreakable, anti-fungal and good resistant to common household chemicals. By precise measurements and strict selection of raw materials, **Legend** offer the best quality waste traps with standard depth of **80mm water seal** to perfectly match with the wholly sealed, watertight system in every sanitary pipework. The types of **Legend** traps range from the bottle, running, tubular P, U, S and bath trap. They are known as the most cost-effective solution to those waste fitments problems in leakage, blockage or breakage aspects.

在傳統聚水器的基礎上，**Legend** 為客戶提供了低噪音、配備防虹吸裝置的產品系列，其工作原理是透過聚水器上的單向活門，讓空氣不需通過排水口而進入排水系統，令排水系統內經常產生的負氣壓得以平衡，以保存聚水器水封之標準深度。

**Legend** 聚水器採用聚丙烯共聚材料製造，在正常的情况下可以經受長時間的張力、強撞擊力、霜凍及熱水。此外，它們也具有無需要特別保養、不易斷裂、抗霉菌、可耐一般家居化學品的特點。

**Legend** 選料非常嚴格，產品數值精確，在**80毫米深度水封**的標準下，為現今排污管道工程提供了合乎嚴格要求的優質密封聚水器。

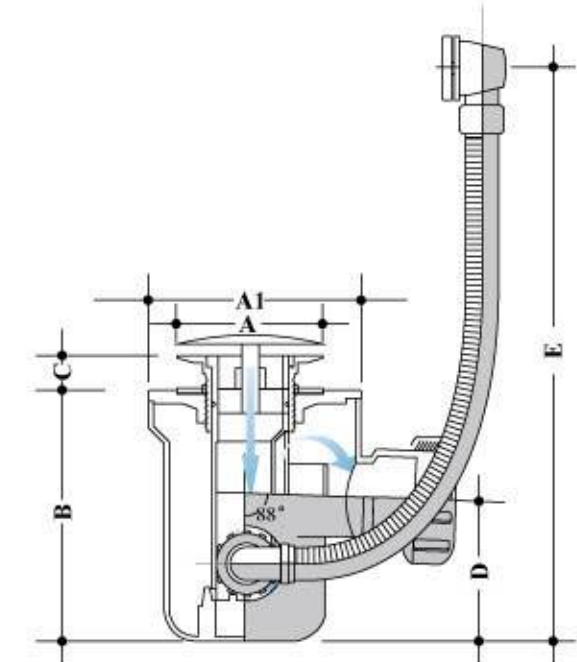
**Legend** 聚水器種類繁多，有瓶式、P型、U型、S型及浴盆用聚水器等，能配合各不同類型的排污裝置，為解決系統內滲漏、阻塞、破損等問題，提供了最經濟、最有效的配套產品。



# Legend



LB 883PU/L



## Top Access 80mm Seal Resealing Bath Trap with Overflow

頂掀式 80 毫米水封防虹吸浴缸聚水器連滿水喉

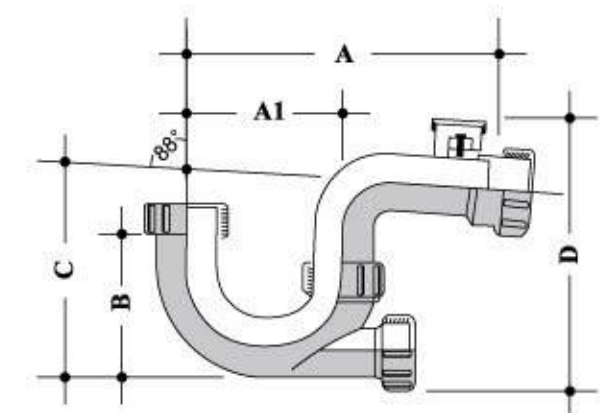
Model No.	Nom. Size (mm)	Anti-Siphon	Water Seal (mm)	Pop-up	Compression joint outlet	A Ø(mm)	A1 Ø(mm)	B (mm)	C (mm)	D (mm)	E (mm)
LB 883PU*	40	*	80	*	*	70	98	127	8-20	70	580

# (PU/L) = Product with **Left** Flexible Overflow Tube

# (PU/R) = Product with **Right** Flexible Overflow Tube



LB 881



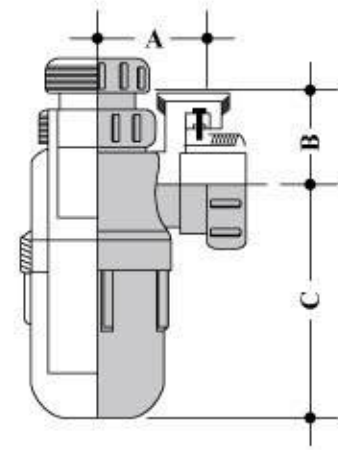
## Bath Trap / 浴缸聚水器

Model No.	Nom. Size (mm)	Anti-Siphon	Water Seal (mm)	Female B.S.P thread inlet	Female B.S.P thread outlet	Compression joint outlet	A (mm)	A1 (mm)	B (mm)	C (mm)	D (mm)
LB 881	40	*	80	*		*	200	110	110	140	190
LB 882	40	*	80	*	*		223	110	110	140	190

## Legend



LT 781



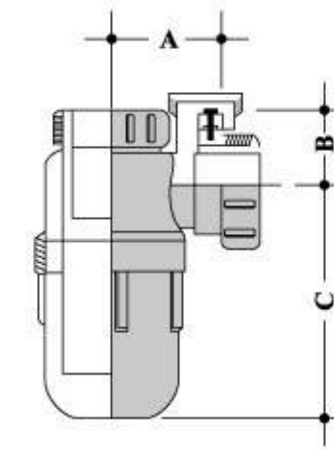
### Bottle Trap / 瓶式聚水器

Model No.	Nom. Size (mm)	Anti-Siphon	Water Seal (mm)	Adjustable tube inlet	Adjustable tube outlet	Compression joint outlet	A (mm)	B (mm)	C (mm)
LT 781	40	*	80	*		*	52	46-150	125
LT 782	32	*	80	*		*	52	46-150	125

## Legend



LT 782.1

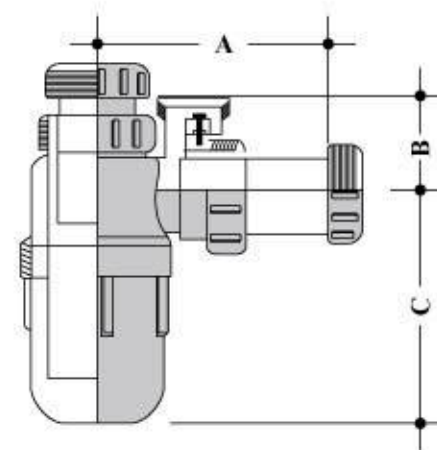


### Bottle Trap / 瓶式聚水器

Model No.	Nom. Size (mm)	Anti-Siphon	Water Seal (mm)	Compression joint inlet for copper tube waste fitting	Adjustable tube outlet	Compression joint outlet	A (mm)	B (mm)	C (mm)
LT 781.1	40	*	80	*		*	52	42	125
LT 782.1	32	*	80	*		*	52	42	125



LT 681

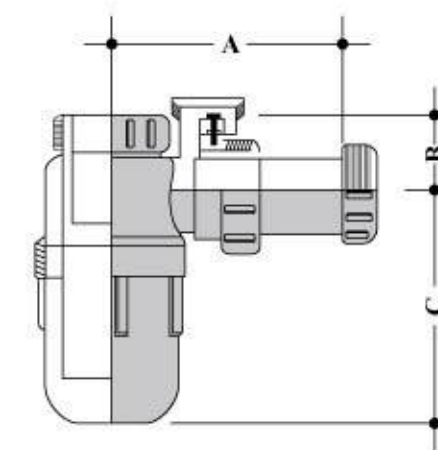


### Bottle Trap / 瓶式聚水器

Model No.	Nom. Size (mm)	Anti-Siphon	Water Seal (mm)	Adjustable tube inlet	Adjustable tube outlet	Compression joint outlet	A (mm)	B (mm)	C (mm)
LT 681	40	*	80	*	*		86-182	46-150	125
LT 682	32	*	80	*	*		86-182	46-150	125



LT 682.1



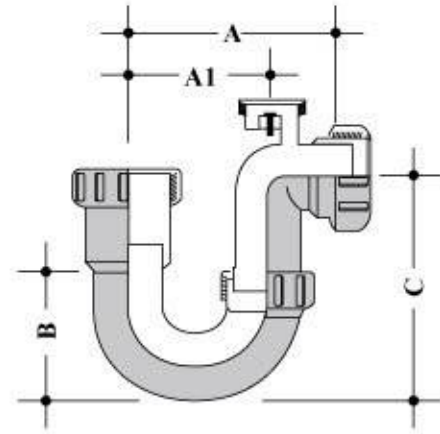
### Bottle Trap / 瓶式聚水器

Model No.	Nom. Size (mm)	Anti-Siphon	Water Seal (mm)	Compression joint inlet for copper tube waste fitting	Adjustable tube outlet	Compression joint outlet	A (mm)	B (mm)	C (mm)
LT 681.1	40	*	80	*	*		86-182	42	125
LT 682.1	32	*	80	*	*		86-182	42	125

## Legend



LP 981



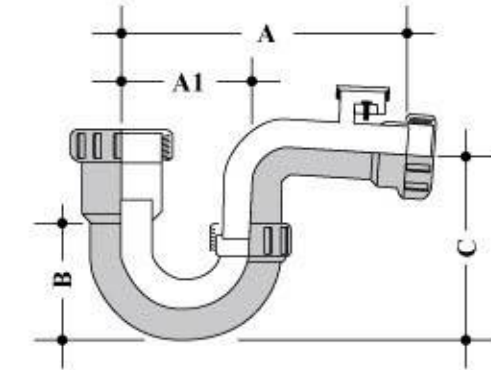
### Tubular 'P' Trap / 'P'型聚水器

Model No.	Nom. Size (mm)	Anti-Siphon	Water Seal (mm)	Adjustable tube inlet	Compression joint inlet	Compression joint outlet	A (mm)	A1 (mm)	B (mm)	C (mm)
LP 981	40	*	80		*	*	115	85	82	136
LP 983	40		80		*	*	115	85	82	136
LP 2981	50	*	80		*	*	175	110	105	155
LP 2983	50		80		*	*	175	110	105	155

## Legend



LP 985

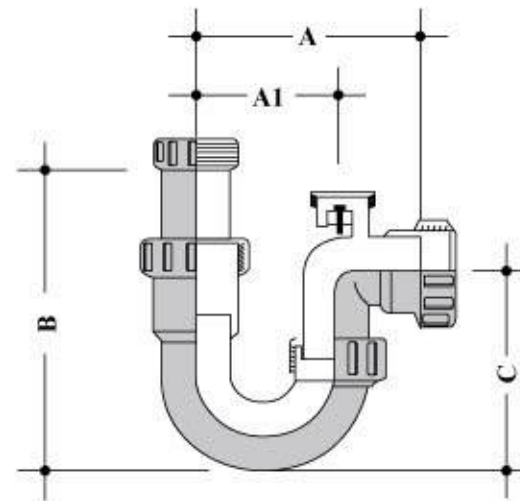


### Running Tubular 'P' Trap / 順水'P'型聚水器

Model No.	Nom. Size (mm)	Anti-Siphon	Water Seal (mm)	Adjustable tube inlet	Compression joint inlet	Compression joint outlet	A (mm)	A1 (mm)	B (mm)	C (mm)
LP 985	40	*	80		*	*	178	85	82	130



LP 981.1

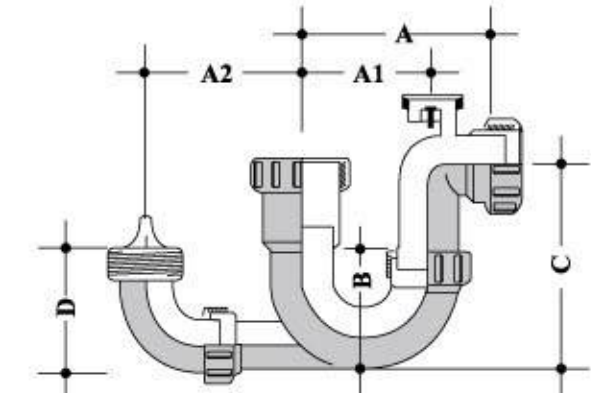


### Tubular 'P' Trap / 'P'型聚水器

Model No.	Nom. Size (mm)	Anti-Siphon	Water Seal (mm)	Adjustable tube inlet	Compression joint inlet	Compression joint outlet	A (mm)	A1 (mm)	B (mm)	C (mm)
LP 981.1	40	*	80	*		*	115	85	145-240	136
LP 983.1	40		80	*		*	115	85	145-240	136
LP 2981.1	50	*	80	*		*	175	110	230-265	155
LP 2983.1	50		80	*		*	175	110	230-265	155



LP 981WR



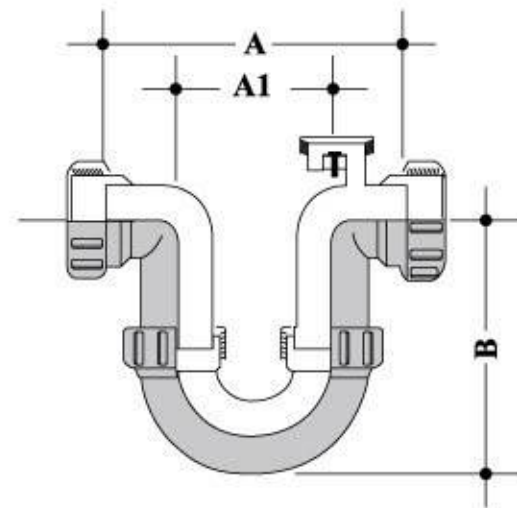
### Water Seal Replenishment Tubular 'P' Trap / 可補充水封'P'型聚水器

Model No.	Nom. Size (mm)	Anti-Siphon	Water Seal (mm)	Compression joint inlet	Male B.S.P.thread secondary inlet	Compression joint outlet	A (mm)	A1 (mm)	A2 (mm)	B (mm)	C (mm)	D (mm)
LP 981WR	40	*	80	*	*	*	115	85	93	82	136	100
LP 2981WR	50	*	80	*	*	*	175	110	93	105	155	100

## Legend



LP 982

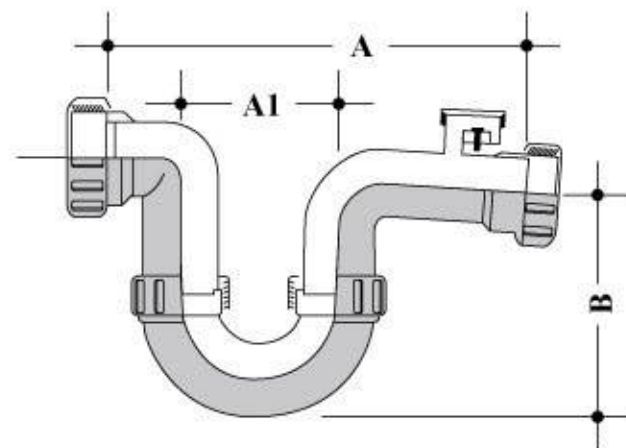


### Tubular 'U' Trap / 'U'型聚水器

Model No.	Nom. Size (mm)	Anti-Siphon	Water Seal (mm)	Adjustable tube inlet	Compression joint inlet	Compression joint outlet	A (mm)	A1 (mm)	B (mm)
LP 982	40	*	80		*	*	145	85	136
LP 984	40		80		*	*	145	85	136
LP 2982	50	*	80		*	*	240	110	155
LP 2984	50		80		*	*	240	110	155



LP 986



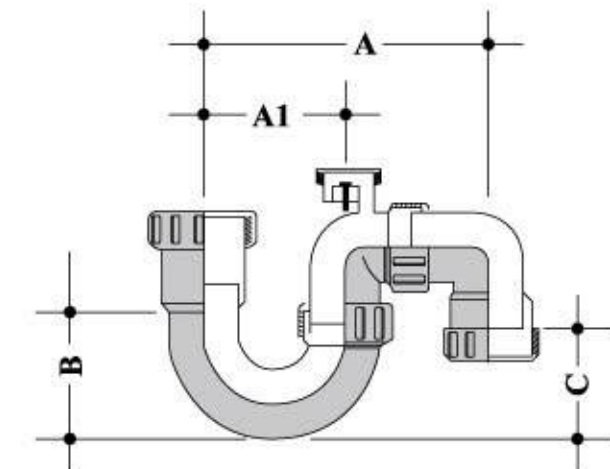
### Running Tubular 'U' Trap / 順水'U'型聚水器

Model No.	Nom. Size (mm)	Anti-Siphon	Water Seal (mm)	Adjustable tube inlet	Compression joint inlet	Compression joint outlet	A (mm)	A1 (mm)	B (mm)
LP 986	40	*	80		*	*	208	85	130

## Legend



LP 2987

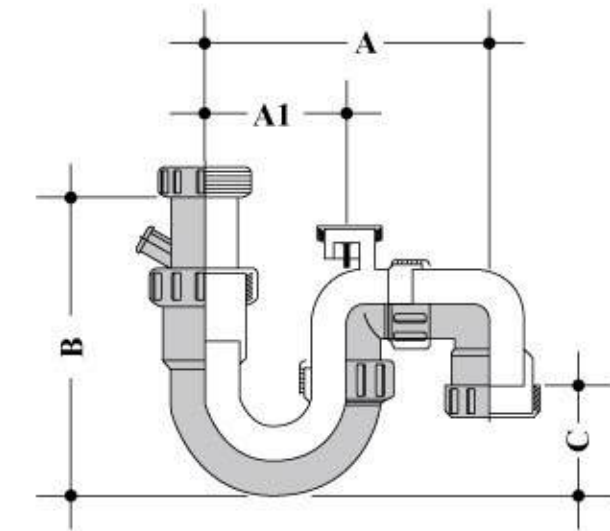


### Tubular 'S' Trap / 'S'型聚水器

Model No.	Nom. Size (mm)	Anti-Siphon	Water Seal (mm)	Adjustable tube inlet	Compression joint inlet	Compression joint outlet	A (mm)	A1 (mm)	B (mm)	C (mm)
LP 2987	50	*	80		*	*	80-220	110	105	85
LP 2988	50		80		*	*	80-220	110	105	85



LP 2987.1



### Tubular 'S' Trap / 'S'型聚水器

Model No.	Nom. Size (mm)	Anti-Siphon	Water Seal (mm)	Adjustable tube inlet	Compression joint inlet	Compression joint outlet	A (mm)	A1 (mm)	B (mm)	C (mm)
LP 2987.1	50	*	80	*		*	80-220	110	230-265	85
LP 2988.1	50		80	*		*	80-220	110	230-265	85



# Legend

## PVC-u Floor Drains / PVC-u地漏

### Adjustable Vertical Grating Floor Drains 可調節垂直漏格面地漏

### Two-Ways Grating Balcony Floor Drains 露台雙向漏格面地漏

### Brass-made Hopper Horizontal Grating Floor Drains with Variable Leveling Device 可調節水平漏格面地漏

PVC-u made floor drains come with the enlarged grooved and puddle flanges to offer an additional protection of waterproofing. There are two basic types of the *Legend* floor drains - Vertical/ Horizontal suitable for any distinct architectural designs.

Two-ways Grating (Balcony) Floor Drain was one of the successful joint developments with Housing Department offering a better water discharge rate over the convention floor drains by means of a merits combination of Vertical/Horizontal water flow theory. The floor drains have been proven to enhance the discharge rate effectively by the authorities and became the popular floor drains at the shower traps in public housing and at the balcony of the private residential projects.

A patent design of *Legend* Adjustable Vertical Grating Floor Drain has been invented to rectify the misalignment of hopper body encountered during the precast process stage. It minimizes the cost of corrections or re-works for any non-conforming products at all time.

Another value-added product, the rugged Brass-made Hopper Horizontal Grating Floor Drain with variable leveling device, is able to rectify any misalignment of the hopper body encountered horizontally during the precast stage. The drain slots on the frame shall allow excess water within the concrete slab to be drained out constantly.

*Legend* PVC-u 地漏，其坑型凹槽和圓形輪緣設計可提供額外的防水保護，有垂直式及水平式兩種選擇，可應用於任何的建築設計上。

與傳統地漏比較，以垂直式及水平式相結組合的雙向漏格面地漏，是*Legend*與房屋委員會共同開發產品的成功範例，能有效地提高排水率，產品已經被有關部門認可，並成為現今公共及私人屋苑廣泛採用的裝置。

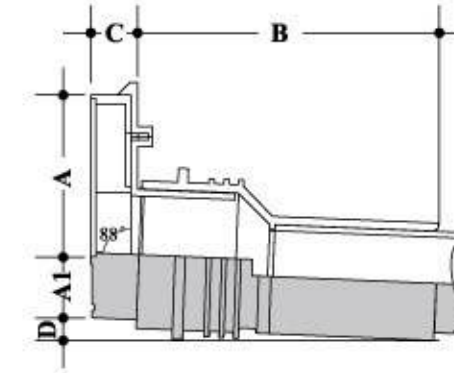
已專利的*Legend*可調節垂直漏格面地漏，其主要功能是可以調整在完成預制安裝過程後發現的各種尺寸誤差，因此大大減少了需要修改或重做的成本。

可調節水平漏格面是*Legend*另一增值產品，帶有瓷磚底部疏水功能設計，同樣地可以調整在完成預制安裝過程後發現的各種尺寸誤差而大大減少了需要修改或重做的成本。

# Legend



LD 381SG

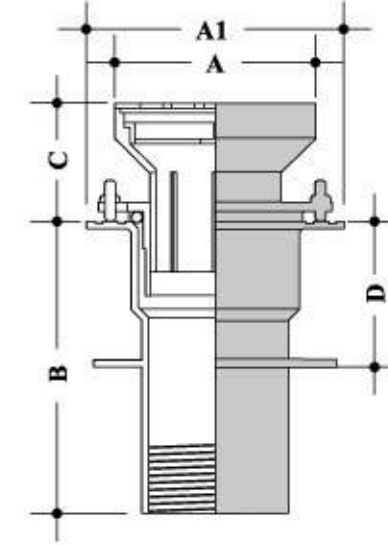


### Floor Drain - Adjustable Vertical Grating / 可調節垂直漏格面地漏 (伸縮企圍)

Model No.	Nom. Size (mm)	Grating Size (mm)	Stainless steel grating	A (mm)	A1 (mm)	B (mm)	C (mm)	D (mm)
LD 381SG	40	80×65	*	69	26-42	123	27-37	8
LD 382SG	50	80×65	*	69	26-42	123	27-37	8



LD 384SG

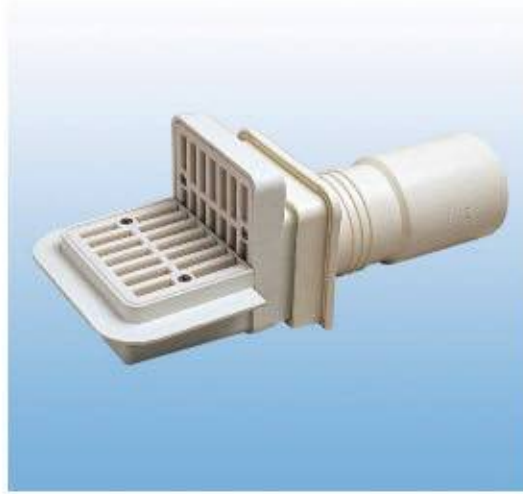


### Floor Drain - Horizontal Grating with Variable Leveling Device

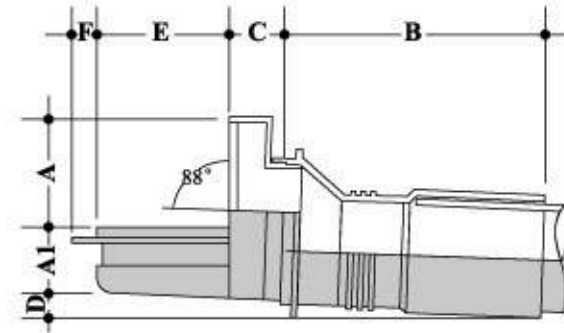
可調節水平漏格面地漏 (底向排水)

Model No.	Nom. Size (mm)	Grating Size (mm)	Stainless steel grating	Brass hopper	Drain slot	A (mm)	A1 Ø (mm)	B (mm)	C (mm)	D (mm)
LD 383SG	40	86×86	*	*	*	86	110	125	36-65	63
LD 384SG	50	86×86	*	*	*	86	110	125	36-65	63

# Legend



LD 182TW

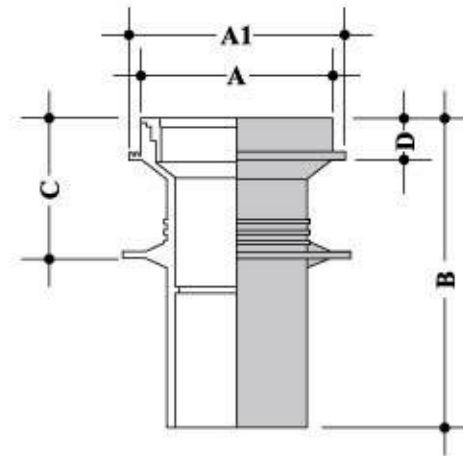


## Balcony Floor Drain - Two Ways Grating / 露台雙向漏格面地漏

Model No.	Nom. Size (mm)	Grating Size (mm)	White ABS grating	A (mm)	A1 (mm)	B (mm)	C (mm)	D (mm)	E (mm)	F (mm)
LD 181TW	40	80×65	*	53-68	24-39	152	18-26	15	70	15
LD 182TW	50	80×65	*	53-68	24-39	152	18-26	15	70	15



LD 186C



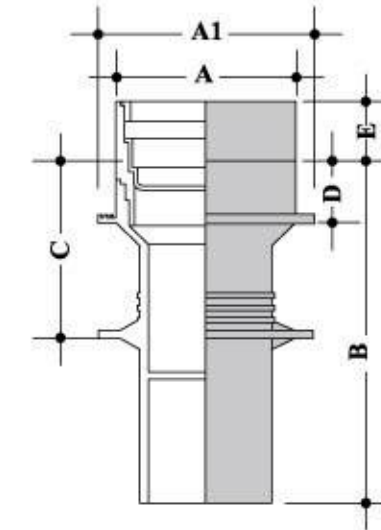
## Floor Drain - Horizontal Grating / 水平漏格面地漏(底向排水)

Model No.	Nom. Size (mm)	Grating Size (mm)	White ABS grating	Chrome plated ABS grating	A (mm)	A1 (mm)	B (mm)	C (mm)	D (mm)
LD 183	40	80×80	*		86	99	173	75	18
LD 184	50	80×80	*		86	99	173	75	18
LD 185	40	100×100	*		106	119	173	75	18
LD 186	50	100×100	*		106	119	173	75	18
LD 187	50	150×150	*		156	169	173	75	18
LD 188	80	150×150	*		156	169	173	75	18
LD 183C	40	80×80		*	86	99	173	75	18
LD 184C	50	80×80		*	86	99	173	75	18
LD 185C	40	100×100		*	106	119	173	75	18
LD 186C	50	100×100		*	106	119	173	75	18
LD 187C	50	150×150		*	156	169	173	75	18
LD 188C	80	150×150		*	156	169	173	75	18

# Legend



LD 184.1C

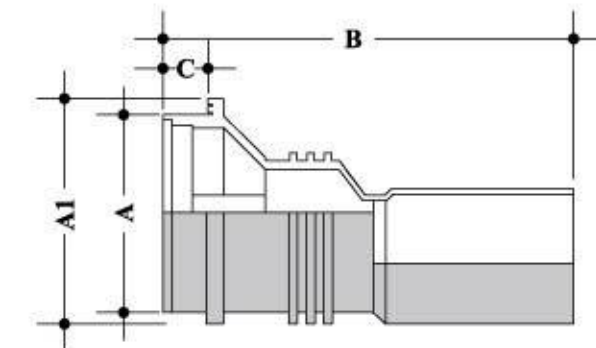


## Floor Drain - Extension Frame (Horizontal Grating) / 配加高件水平漏格面地漏(底向排水)

Model No.	Nom. Size (mm)	Grating Size (mm)	White ABS grating	Chrome plated ABS grating	A (mm)	A1 (mm)	B (mm)	C (mm)	D (mm)	E (mm)
LD 183.1	40	80×80	*		86	99	173	75	18	30
LD 183.2	40	80×80	*		86	99	173	75	18	50
LD 184.1	50	80×80	*		86	99	173	75	18	30
LD 184.2	50	80×80	*		86	99	173	75	18	50
LD 183.1C	40	80×80		*	86	99	173	75	18	30
LD 183.2C	40	80×80		*	86	99	173	75	18	50
LD 184.1C	50	80×80		*	86	99	173	75	18	30
LD 184.2C	50	80×80		*	86	99	173	75	18	50



LD 181SG



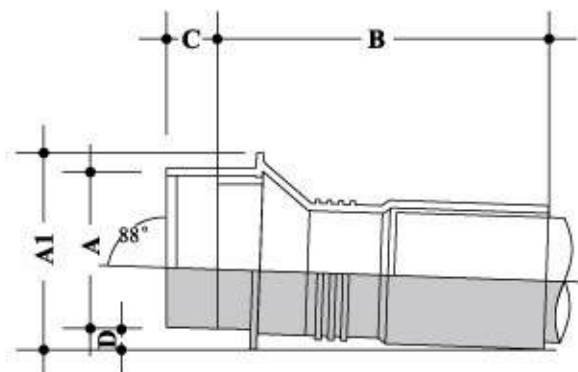
## Floor Drain - Vertical Grating / 垂直漏格面地漏(企開)

Model No.	Nom. Size (mm)	Grating Size (mm)	White ABS grating	Chrome plated ABS grating	Stainless steel grating	A (mm)	A1 (mm)	B (mm)	C (mm)
LD 181	40	80×65	*			73	88	152	17
LD 182	50	80×65	*			73	88	152	17
LD 181C	40	80×65		*		73	88	152	17
LD 182C	50	80×65		*		73	88	152	17
LD 181SG	40	80×65			*	73	88	152	17
LD 182SG	50	80×65			*	73	88	152	17

## Legend



LD 182.1



### Floor Drain - Extension Frame (Vertical Grating) / 配加長件垂直漏格面地漏(企剛)

Model No.	Nom. Size (mm)	Grating Size (mm)	White ABS grating	Chrome plated ABS grating	Stainless steel grating	A (mm)	A1 (mm)	B (mm)	C (mm)	D (mm)
LD 181.1	40	80×65	*			73	88	150	17	10
LD 182.1	50	80×65	*			73	88	150	17	10
LD 181E	40	80×65	*			73	88	175	17	10
LD 182E	50	80×65	*			73	88	175	17	10
LD 181EF	40	80×65	*			73	88	200	17	10
LD 182EF	50	80×65	*			73	88	200	17	10
LD 181EL	40	80×65	*			73	88	250	17	10
LD 182EL	50	80×65	*			73	88	250	17	10
LD 181.1C	40	80×65		*		73	88	150	17	10
LD 182.1C	50	80×65		*		73	88	150	17	10
LD 181EC	40	80×65		*		73	88	175	17	10
LD 182EC	50	80×65		*		73	88	175	17	10
LD 181EFC	40	80×65		*		73	88	200	17	10
LD 182EFC	50	80×65		*		73	88	200	17	10
LD 181ELC	40	80×65		*		73	88	250	17	10
LD 182ELC	50	80×65		*		73	88	250	17	10
LD 181.1SG	40	80×65			*	73	88	150	17	10
LD 182.1SG	50	80×65			*	73	88	150	17	10
LD 181ESG	40	80×65			*	73	88	175	17	10
LD 182ESG	50	80×65			*	73	88	175	17	10
LD 181EFSG	40	80×65			*	73	88	200	17	10
LD 182EFSG	50	80×65			*	73	88	200	17	10
LD 181ELSG	40	80×65			*	73	88	250	17	10
LD 182ELSG	50	80×65			*	73	88	250	17	10

## Legend

### Top Access 80mm Seal Resealing Gullies

#### 頂掀式80毫米水封防虹吸去水斗



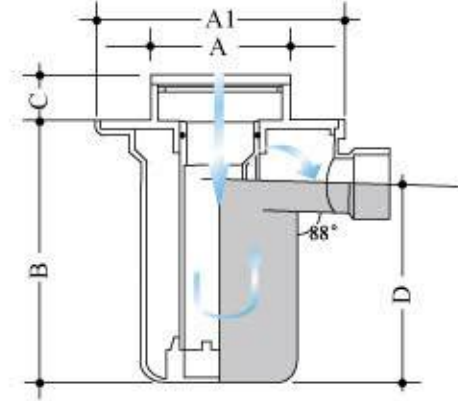
Combining the major advantages of top accessibility, resealing characteristic- anti-siphonic action and the 80mm depth of water seal, **Legend** Gullies eliminate the needs of secondary ventilation or any additional traps situated externally the buildings and they also provide a quick and easy way for the regular cleaning or maintenance. The permissible overall height for the gullies lies between 135-240mm and the new LG 496 series can be adjusted even higher by fitting extra clamping unit(s) subject to the conditions of construction sites. A variety of gratings materials is optional- ABS(Ivory White), Chrome-plated ABS (Metallic Silver), Chrome-plated Brass (Metallic Silver) and Stainless Steel (Matt/Gloss Silver).

**Legend** 防虹吸去水斗為頂掀式設計，並有再次水封功能及80毫米水封深度的特點，為建築物減少了排氣管的必要性，也不必在牆外安裝聚水器。由於內置配件可從頂部取出，固日後清理及保養亦非常簡易。防虹吸去水斗可容許的整體高度在135-240毫米之間，而最新之LG 496系列可按實際施工情況加裝配件調節至更高的高度。漏格面有象牙白色ABS塑料、鉻電鍍銅、不銹鋼等可供選擇。

## Legend



LG 496B



### Top Access 80mm Seal Resealing Gully

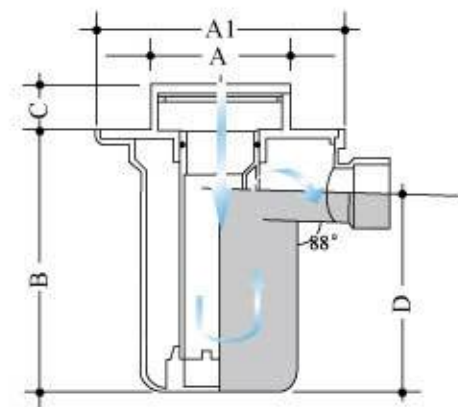
頂掀式80毫米水封防虹吸去水斗

Model No.	Nom. Size (mm)	Grating Size Ø(mm)	Chrome plated brass frame	Chrome plated brass grating	Drain slot	A Ø(mm)	A1 Ø(mm)	B (mm)	C # (mm)	D (mm)
LG 496B	50	81	*	*		87	144	152	19-88	113
LG 496B-SD	50	81	*	*	*	87	144	152	19-88	113

# The height "C" can be further increased by fitting additional clamping unit(s)



LG 496BQ-SD



### Top Access 80mm Seal Resealing Gully

頂掀式80毫米水封防虹吸去水斗

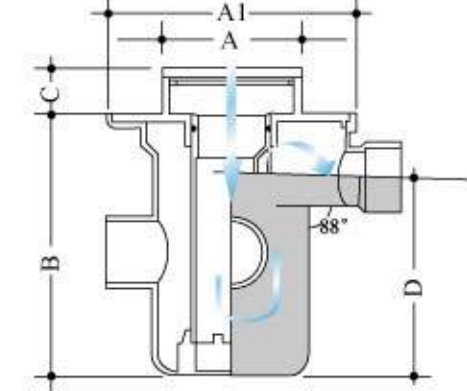
Model No.	Nom. Size (mm)	Grating Size Ø(mm)	Chrome plated brass frame & grating	Stainless steel frame & grating	Drain slot	A (mm)	A1 Ø(mm)	B (mm)	C # (mm)	D (mm)
LG 496BQ	50	81	*			88	144	152	19-88	113
LG 496BQ-SD	50	81	*		*	88	144	152	19-88	113
LG 496SQ	50	80		*		96	144	152	19-88	113
LG 496SQ-SD	50	80		*	*	96	144	152	19-88	113

# The height "C" can be further increased by fitting additional clamping unit(s)

## Legend



LG 496B-WR



### Top Access 80mm Seal Resealing Gully with Water Seal Replenishment Inlet

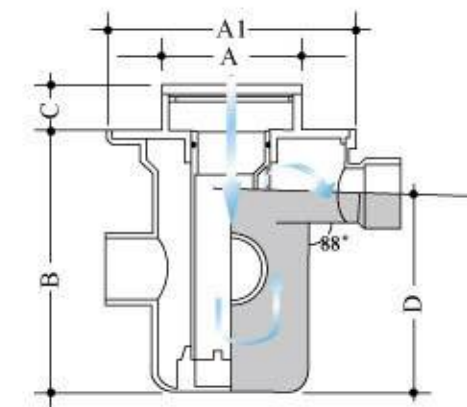
頂掀式80毫米水封防虹吸去水斗(設水封補給管口)

Model No.	Nom. Size (mm)	Grating Size Ø(mm)	Chrome plated brass frame	Chrome plated brass grating	Drain slot	A Ø(mm)	A1 Ø(mm)	B (mm)	C # (mm)	D (mm)
LG 496B-WR	50	81	*	*		87	144	152	19-88	113
LG 496B-SD-WR	50	81	*	*	*	87	144	152	19-88	113

# The height "C" can be further increased by fitting additional clamping unit(s)  
^ 2 plugs are provided for customer to determine the direction of water seal replenishment inlet



LG 496BQ-SD-WR



### Top Access 80mm Seal Resealing Gully with Water Seal Replenishment Inlet

頂掀式80毫米水封防虹吸去水斗(設水封補給管口)

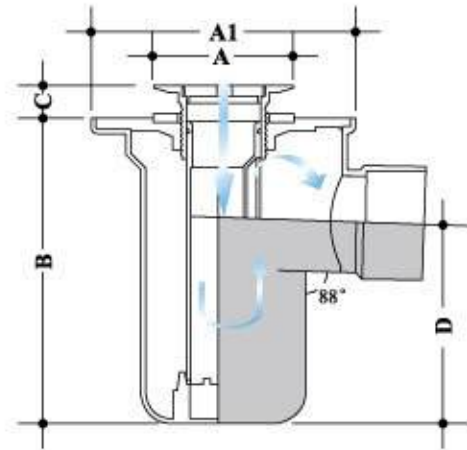
Model No.	Nom. Size (mm)	Grating Size Ø(mm)	Chrome plated brass frame & grating	Stainless steel frame & grating	Drain slot	A (mm)	A1 Ø(mm)	B (mm)	C # (mm)	D (mm)
LG 496BQ-WR	50	81	*			88	144	152	19-88	113
LG 496BQ-SD-WR	50	81	*		*	88	144	152	19-88	113
LG 496SQ-WR	50	80		*		96	144	152	19-88	113
LG 496SQ-SD-WR	50	80		*	*	96	144	152	19-88	113

# The height "C" can be further increased by fitting additional clamping unit(s)  
^ 2 plugs are provided for customer to determine the direction of water seal replenishment inlet

## Legend



LG 492



### Top Access 80mm Seal Resealing Gully

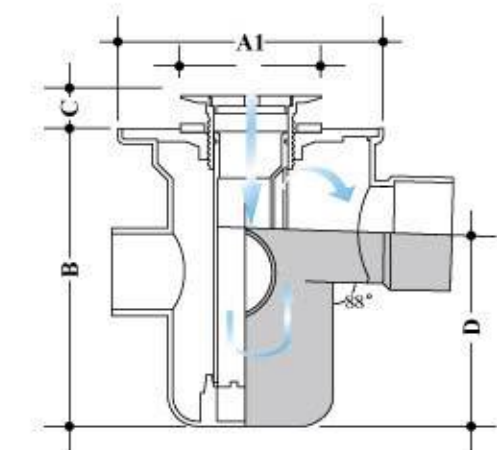
頂掀式80毫米水封防虹吸去水斗

Model No.	Nom. Size (mm)	Grating Size Ø(mm)	Chrome plated ABS grating	Chrome plated brass grating	A Ø(mm)	A1 Ø(mm)	B (mm)	C (mm)	D (mm)
LG 492	50	46	*		76	144	152	8-20	113
LG 492B	50	46		*	70	144	152	8-20	113

## Legend



LG 492-WR



### Top Access 80mm Seal Resealing Gully with Water Seal Replenishment Inlet

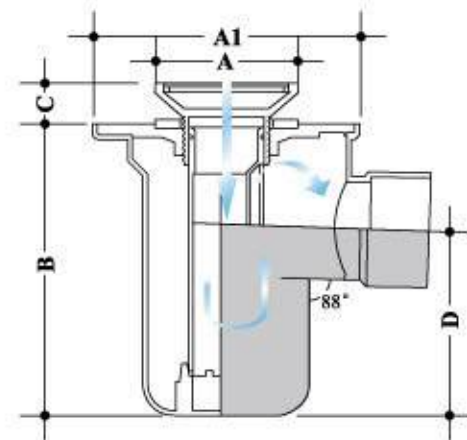
頂掀式80毫米水封防虹吸去水斗(設水封補給管口)

Model No.	Nom. Size (mm)	Grating Size Ø(mm)	Chrome plated ABS grating	Chrome plated brass grating	A Ø(mm)	A1 Ø(mm)	B (mm)	C (mm)	D (mm)
LG 492-WR	50	46	*		76	144	152	8-20	113
LG 492B-WR	50	46		*	70	144	152	8-20	113

^ 2 plugs are provided for customer to determine the direction of water seal replenishment inlet



LG 492S



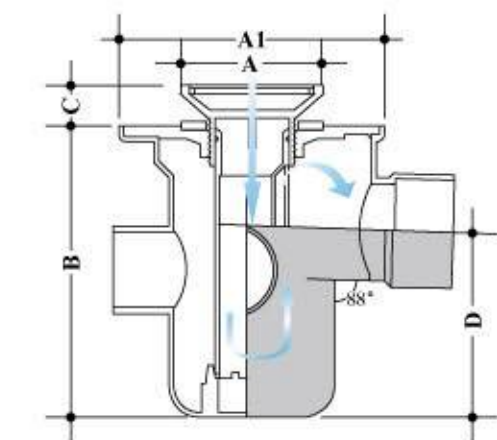
### Top Access 80mm Seal Resealing Gully

頂掀式80毫米水封防虹吸去水斗

Model No.	Nom. Size (mm)	Grating Size Ø(mm)	Chrome plated brass hopper	Stainless steel grating	Drain slot	A (mm)	A1 Ø(mm)	B (mm)	C (mm)	D (mm)
LG 492S	50	76	*	*		81	144	152	16-30	113
LG 492S-SD	50	76	*	*	*	81	144	152	16-30	113



LG 492S-WR



### Top Access 80mm Seal Resealing Gully with Water Seal Replenishment Inlet

頂掀式80毫米水封防虹吸去水斗(設水封補給管口)

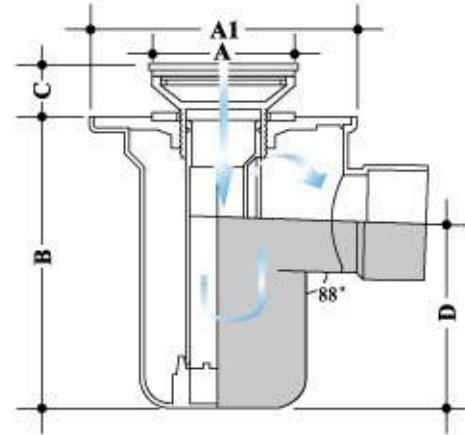
Model No.	Nom. Size (mm)	Grating Size Ø(mm)	Chrome plated brass hopper	Stainless steel grating	Drain slot	A (mm)	A1 Ø(mm)	B (mm)	C (mm)	D (mm)
LG 492S-WR	50	76	*	*		81	144	152	16-30	113
LG 492S-SD-WR	50	76	*	*	*	81	144	152	16-30	113

^ 2 plugs are provided for customer to determine the direction of water seal replenishment inlet

## Legend



LG 492BQ



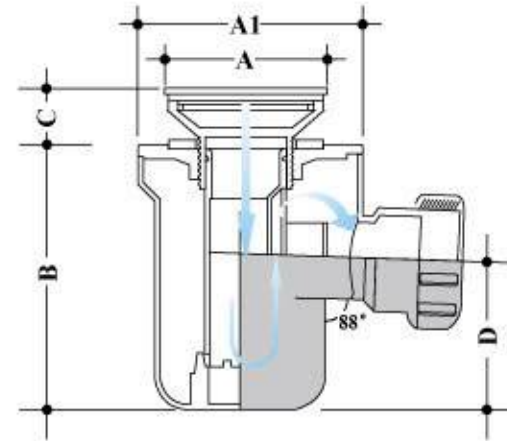
### Top Access 80mm Seal Resealing Gully

頂掀式80毫米水封防虹吸去水斗

Model No.	Nom. Size (mm)	Grating Size Ø(mm)	C.P. Brass Frame & Grating (Slotted Holes)	C.P. Brass Frame & Grating (Round Holes)	Drain slot	A (mm)	A1 Ø(mm)	B (mm)	C (mm)	D (mm)
LG 492BQ	50	76	*			86	144	152	32-46	113
LG 492BQ-SD	50	76	*		*	86	144	152	32-46	113
LG 492BQ-RH	50	76		*		86	144	152	32-46	113
LG 492BQ-RH-SD	50	76		*	*	86	144	152	32-46	113



LG 483BQ-RH-SD



### Top Access 80mm Seal Resealing Gully

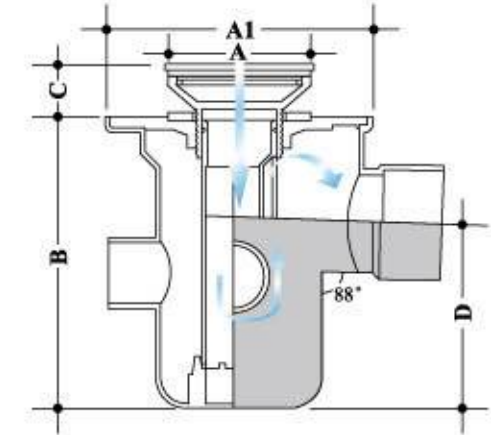
頂掀式80毫米水封防虹吸去水斗

Model No.	Nom. Size (mm)	Grating Size Ø(mm)	C.P. Brass Frame & Grating (Slotted Holes)	C.P. Brass Frame & Grating (Round Holes)	Drain slot	A (mm)	A1 Ø(mm)	B (mm)	C (mm)	D (mm)
LG 483BQ	40	76	*			86	98	127	32-46	70
LG 483BQ-SD	40	76	*		*	86	98	127	32-46	70
LG 483BQ-RH	40	76		*		86	98	127	32-46	70
LG 483BQ-RH-SD	40	76		*	*	86	98	127	32-46	70

## Legend



LG 492 BQ-RH-SD-WR



### Top Access 80mm Seal Resealing Gully with Water Seal Replenishment Inlet

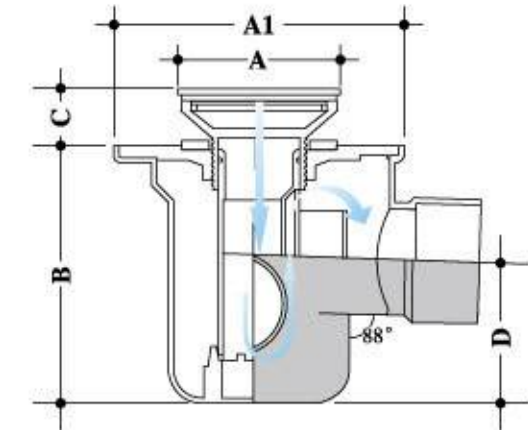
頂掀式80毫米水封防虹吸去水斗(設水封補給管口)

Model No.	Nom. Size (mm)	Grating Size Ø(mm)	C.P. Brass Frame & Grating (Slotted Holes)	C.P. Brass Frame & Grating (Round Holes)	Drain slot	A (mm)	A1 Ø(mm)	B (mm)	C (mm)	D (mm)
LG 492BQ-WR	50	76	*			86	144	152	32-46	113
LG 492BQ-SD-WR	50	76	*		*	86	144	152	32-46	113
LG 492BQ-RH-WR	50	76		*		86	144	152	32-46	113
LG 492BQ-RH-SD-WR	50	76		*	*	86	144	152	32-46	113

^ 2 plugs are provided for customer to determine the direction of water seal replenishment inlet



LG 482BQ-WR



### Top Access 80mm Seal Resealing Gully with Water Seal Replenishment Inlet

頂掀式80毫米水封防虹吸去水斗(設水封補給管口)

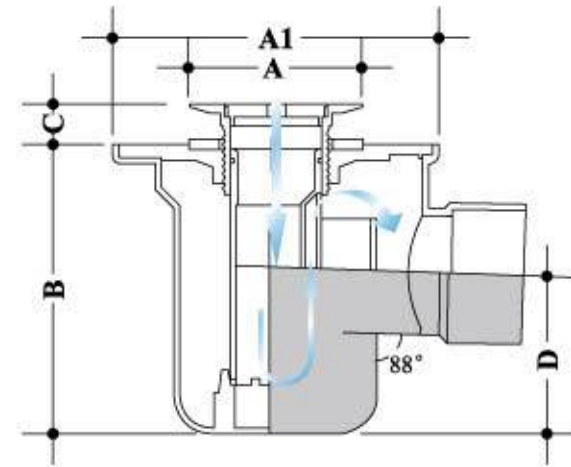
Model No.	Nom. Size (mm)	Grating Size Ø(mm)	C.P. Brass Frame & Grating (Slotted Holes)	C.P. Brass Frame & Grating (Round Holes)	Drain slot	A (mm)	A1 Ø(mm)	B (mm)	C (mm)	D (mm)
LG 482BQ-WR	50	76	*			86	144	127	32-46	68
LG 482BQ-SD-WR	50	76	*		*	86	144	127	32-46	68
LG 482BQ-RH-WR	50	76		*		86	144	127	32-46	68
LG 482BQ-RH-SD-WR	50	76		*	*	86	144	127	32-46	68

^ 1 plug is provided for customer to determine either left or right water seal replenishment inlet

## Legend



LG 482



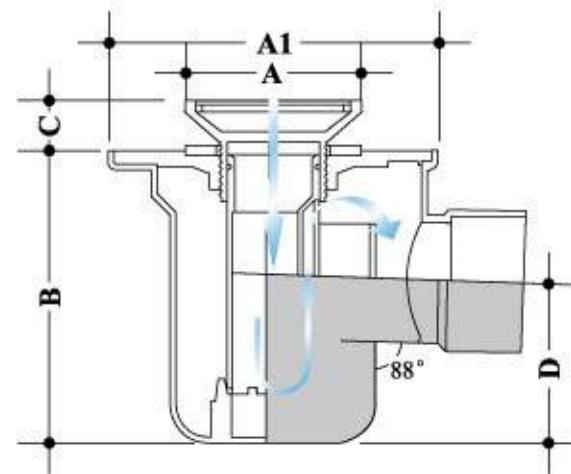
### Top Access 80mm Seal Resealing Gully

頂掀式80毫米水封防虹吸去水斗

Model No.	Nom. Size (mm)	Grating Size Ø (mm)	Chrome plated ABS grating	Chrome plated brass grating	A Ø (mm)	A1 Ø (mm)	B (mm)	C (mm)	D (mm)
LG 482	50	46	*		76	144	127	8-20	68
LG 482B	50	46		*	70	144	127	8-20	68



LG 482S



### Top Access 80mm Seal Resealing Gully

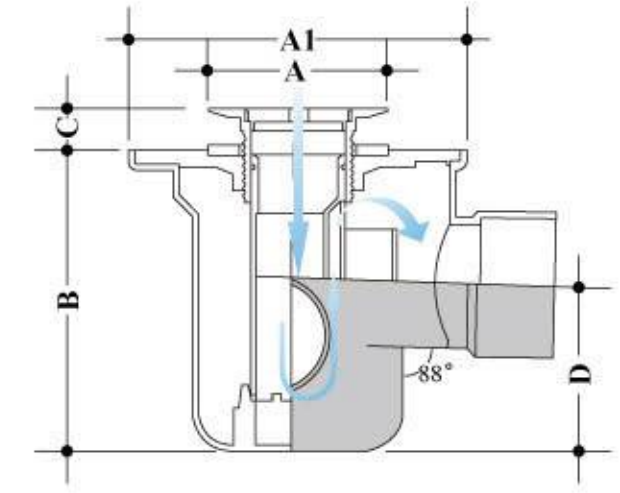
頂掀式80毫米水封防虹吸去水斗

Model No.	Nom. Size (mm)	Grating Size Ø (mm)	Chrome plated brass hopper	Stainless steel grating	Drain slot	A Ø (mm)	A1 Ø (mm)	B (mm)	C (mm)	D (mm)
LG 482S	50	76	*	*		81	144	127	16-30	68
LG 482S-SD	50	76	*	*	*	81	144	127	16-30	68

## Legend



LG 482B-WR



### Top Access 80mm Seal Resealing Gully with Water Seal Replenishment Inlet

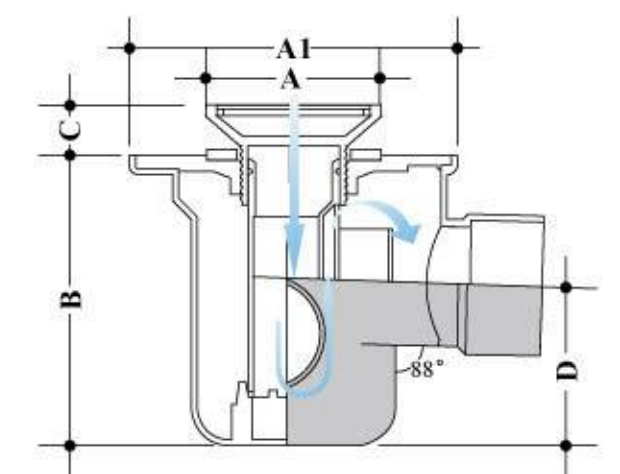
頂掀式80毫米水封防虹吸去水斗(設水封補給管口)

Model No.	Nom. Size (mm)	Grating Size Ø (mm)	Chrome plated ABS grating	Chrome plated brass grating	A Ø (mm)	A1 Ø (mm)	B (mm)	C (mm)	D (mm)
LG 482-WR	50	46	*		76	144	127	8-20	68
LG 482B-WR	50	46		*	70	144	127	8-20	68

^ 1 plug is provided for customer to determine either left or right water seal replenishment inlet



LG 482S-WR



### Top Access 80mm Seal Resealing Gully with Water Seal Replenishment Inlet

頂掀式80毫米水封防虹吸去水斗(設水封補給管口)

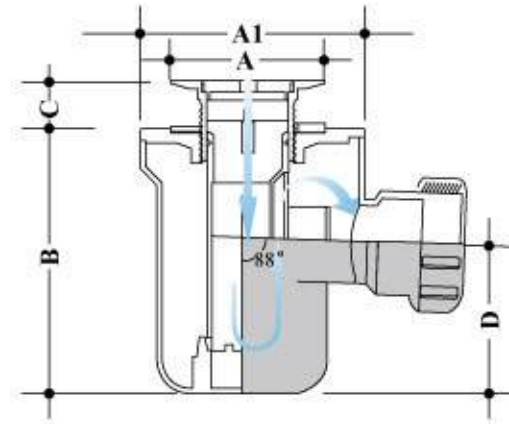
Model No.	Nom. Size (mm)	Grating Size Ø (mm)	Chrome plated brass hopper	Stainless steel grating	Drain slot	A Ø (mm)	A1 Ø (mm)	B (mm)	C (mm)	D (mm)
LG 482S-WR	50	76	*	*		81	144	127	16-30	68
LG 482S-SD-WR	50	76	*	*	*	81	144	127	16-30	68

^ 1 plug is provided for customer to determine either left or right water seal replenishment inlet

## Legend



LG 483B



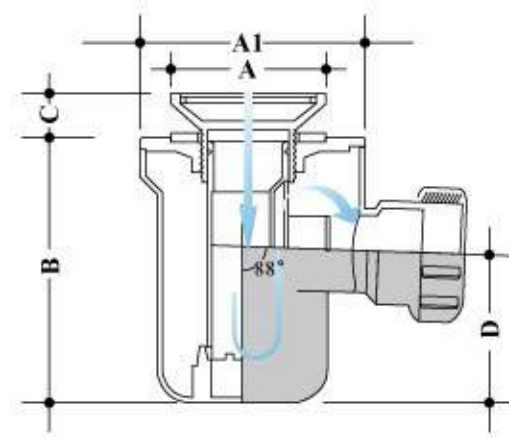
### Top Access 80mm Seal Resealing Gully

頂掀式80毫米水封防虹吸去水斗

Model No.	Nom. Size (mm)	Grating Size Ø (mm)	Chrome plated ABS grating	Chrome plated brass grating	A Ø (mm)	A1 Ø (mm)	B (mm)	C (mm)	D (mm)
LG 483	40	46	*		76	98	127	8-20	70
LG 483B	40	46		*	70	98	127	8-20	70



LG 483S



### Top Access 80mm Seal Resealing Gully

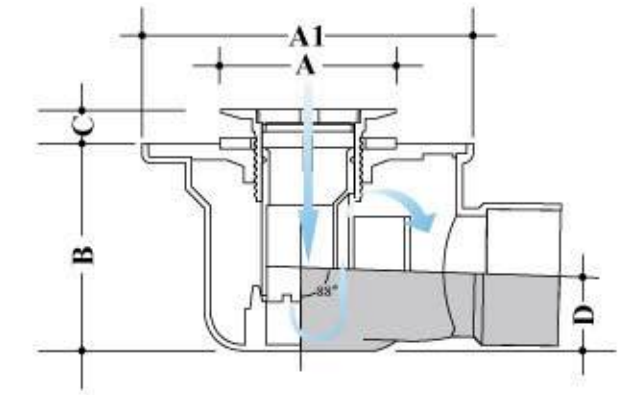
頂掀式80毫米水封防虹吸去水斗

Model No.	Nom. Size (mm)	Grating Size Ø (mm)	Chrome plated brass hopper	Stainless steel grating	Drain slot	A Ø (mm)	A1 Ø (mm)	B (mm)	C (mm)	D (mm)
LG 483S	40	76	*	*		81	98	127	16-30	70
LG 483S-SD	40	76	*	*	*	81	98	127	16-30	70

## Legend



LG 452B



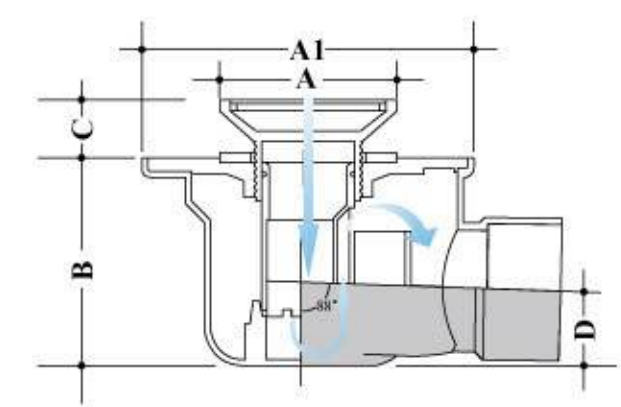
### Top Access 50mm Seal Resealing Gully

頂掀式50毫米水封防虹吸去水斗

Model No.	Nom. Size (mm)	Grating Size Ø (mm)	Chrome plated ABS grating	Chrome plated brass grating	A Ø (mm)	A1 Ø (mm)	B (mm)	C (mm)	D (mm)
LG 452	50	46	*		76	144	90	8-20	30
LG 452B	50	46		*	70	144	90	8-20	30



LG 452S



### Top Access 50mm Seal Resealing Gully

頂掀式50毫米水封防虹吸去水斗

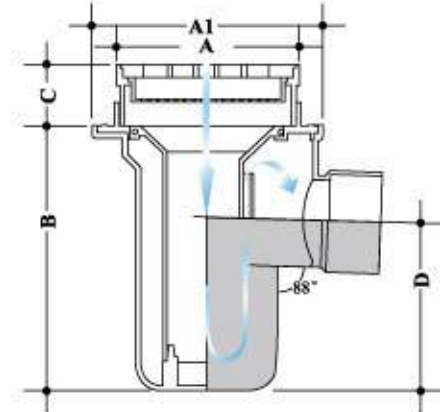
Model No.	Nom. Size (mm)	Grating Size Ø (mm)	Chrome plated brass hopper	Stainless steel grating	Drain slot	A Ø (mm)	A1 Ø (mm)	B (mm)	C (mm)	D (mm)
LG 452S	50	76	*	*		81	144	90	16-30	30
LG 452S-SD	50	76	*	*	*	81	144	90	16-30	30



## Legend



LG 491HS



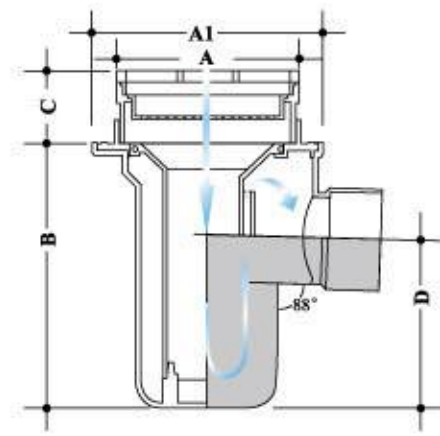
### Top Access 80mm Seal Resealing Gully

頂掀式80毫米水封防虹吸去水斗

Model No.	Nom. Size (mm)	Grating Size (mm)	White ABS grating	Chrome plated ABS grating	Stainless steel grating	Drain slot	A (mm)	A1 (mm)	B (mm)	C (mm)	D (mm)
LG 491	50	109×109	*				114	144	152	27	113
LG 491H	50	109×109	*				114	144	152	28-58	113
LG 491H-SD	50	109×109	*			*	114	144	152	28-58	113
LG 491C	50	109×109		*			114	144	152	27	113
LG 491HC	50	109×109		*			114	144	152	28-58	113
LG 491HC-SD	50	109×109		*		*	114	144	152	28-58	113
LG 491S	50	114×114			*		114	144	152	29	113
LG 491HS	50	114×114			*		114	144	152	30-60	113
LG 491HS-SD	50	114×114			*	*	114	144	152	30-60	113



LG 491HB-SD



### Top Access 80mm Seal Resealing Gully

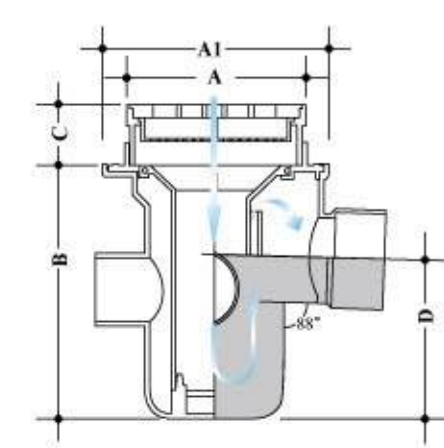
頂掀式80毫米水封防虹吸去水斗

Model No.	Nom. Size (mm)	Grating Size (mm)	Chrome plated brass frame & grating	Drain slot	A (mm)	A1 (mm)	B (mm)	C (mm)	D (mm)
LG 491B	50	104	*		114	144	152	32	113
LG 491HB	50	104	*		114	144	152	33-63	113
LG 491HB-SD	50	104	*	*	114	144	152	33-63	113

## Legend



LG 491HS-WR



### Top Access 80mm Seal Resealing Gully with Water Seal Replenishment Inlet

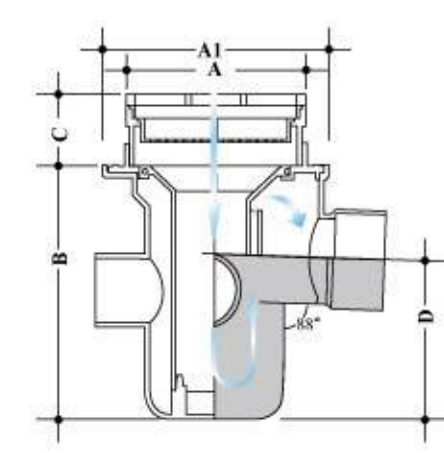
頂掀式80毫米水封防虹吸去水斗(設水封補給管口)

Model No.	Nom. Size (mm)	Grating Size (mm)	White ABS grating	Chrome plated ABS grating	Stainless steel grating	Drain slot	A (mm)	A1 (mm)	B (mm)	C (mm)	D (mm)
LG 491-WR	50	109×109	*				114	144	152	27	113
LG 491H-WR	50	109×109	*				114	144	152	28-58	113
LG 491H-SD-WR	50	109×109	*			*	114	144	152	28-58	113
LG 491C-WR	50	109×109		*			114	144	152	27	113
LG 491HC-WR	50	109×109		*			114	144	152	28-58	113
LG 491HC-SD-WR	50	109×109		*		*	114	144	152	28-58	113
LG 491S-WR	50	114×114			*		114	144	152	29	113
LG 491HS-WR	50	114×114			*		114	144	152	30-60	113
LG 491HS-SD-WR	50	114×114			*	*	114	144	152	30-60	113

^ 2 plugs are provided for customer to determine the direction of water seal replenishment inlet



LG 491HB-SD-WR



### Top Access 80mm Seal Resealing Gully with Water Seal Replenishment Inlet

頂掀式80毫米水封防虹吸去水斗(設水封補給管口)

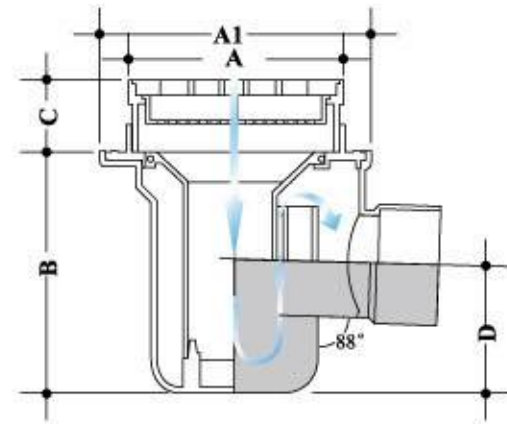
Model No.	Nom. Size (mm)	Grating Size (mm)	Chrome plated brass frame & grating	Drain slot	A (mm)	A1 (mm)	B (mm)	C (mm)	D (mm)
LG 491B-WR	50	104	*		114	144	152	32	113
LG 491HB-WR	50	104	*		114	144	152	33-63	113
LG 491HB-SD-WR	50	104	*	*	114	144	152	33-63	113

^ 2 plugs are provided for customer to determine the direction of water seal replenishment inlet

## Legend



LG 481HS



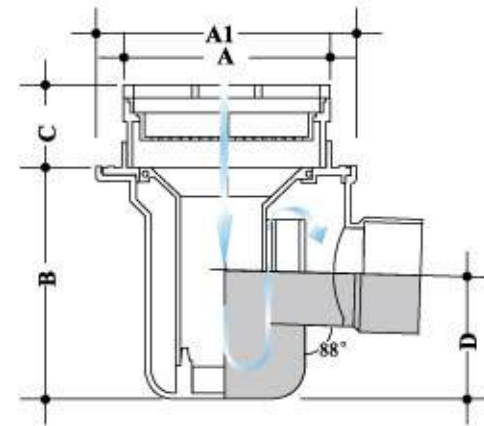
### Top Access 80mm Seal Resealing Gully

頂掀式80毫米水封防虹吸去水斗

Model No.	Nom. Size (mm)	Grating Size (mm)	White ABS grating	Chrome plated ABS grating	Stainless steel grating	Drain slot	A (mm)	A1 (mm)	B (mm)	C (mm)	D (mm)
LG 481	50	109×109	*				114	144	127	27	68
LG 481H	50	109×109	*				114	144	127	28-58	68
LG 481H-SD	50	109×109	*			*	114	144	127	28-58	68
LG 481C	50	109×109		*			114	144	127	27	68
LG 481HC	50	109×109		*			114	144	127	28-58	68
LG 481HC-SD	50	109×109		*		*	114	144	127	28-58	68
LG 481S	50	114×114			*		114	144	127	29	68
LG 481HS	50	114×114			*		114	144	127	30-60	68
LG 481HS-SD	50	114×114			*	*	114	144	127	30-60	68



LG 481HB-SD



### Top Access 80mm Seal Resealing Gully

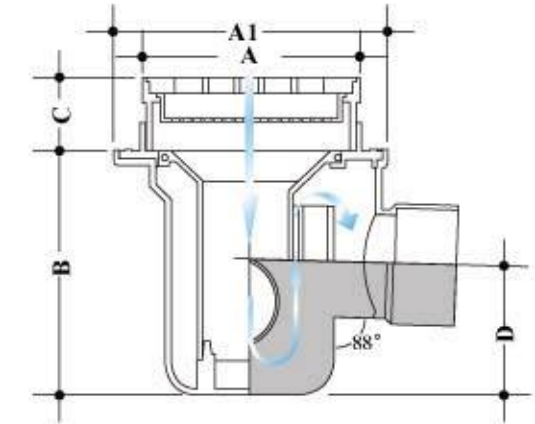
頂掀式80毫米水封防虹吸去水斗

Model No.	Nom. Size (mm)	Grating Size (mm)	Chrome plated brass frame & grating	Drain slot	A (mm)	A1 (mm)	B (mm)	C (mm)	D (mm)
LG 481B	50	104	*		114	144	127	32	68
LG 481HB	50	104	*		114	144	127	33-63	68
LG 481HB-SD	50	104	*	*	114	144	127	33-63	68

## Legend



LG 481HS-WR



### Top Access 80mm Seal Resealing Gully with Water Seal Replenishment Inlet

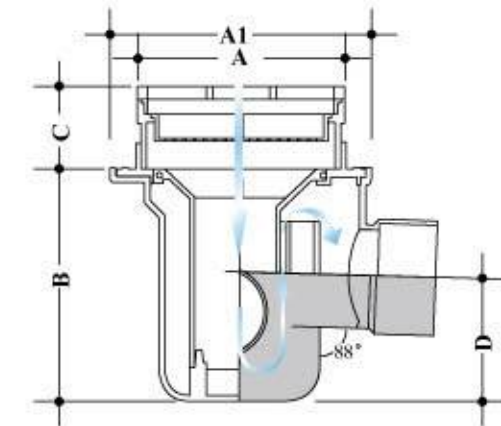
頂掀式80毫米水封防虹吸去水斗(設水封補給管口)

Model No.	Nom. Size (mm)	Grating Size (mm)	White ABS grating	Chrome plated ABS grating	Stainless steel grating	Drain slot	A (mm)	A1 (mm)	B (mm)	C (mm)	D (mm)
LG 481-WR	50	109×109	*				114	144	127	27	68
LG 481H-WR	50	109×109	*				114	144	127	28-58	68
LG 481H-SD-WR	50	109×109	*			*	114	144	127	28-58	68
LG 481C-WR	50	109×109		*			114	144	127	27	68
LG 481HC-WR	50	109×109		*			114	144	127	28-58	68
LG 481HC-SD-WR	50	109×109		*		*	114	144	127	28-58	68
LG 481S-WR	50	114×114			*		114	144	127	29	68
LG 481HS-WR	50	114×114			*		114	144	127	30-60	68
LG 481HS-SD-WR	50	114×114			*	*	114	144	127	30-60	68

^ 1 plug is provided for customer to determine either left or right water seal replenishment inlet



LG 481HB-SD-WR



### Top Access 80mm Seal Resealing Gully with Water Seal Replenishment Inlet

頂掀式80毫米水封防虹吸去水斗(設水封補給管口)

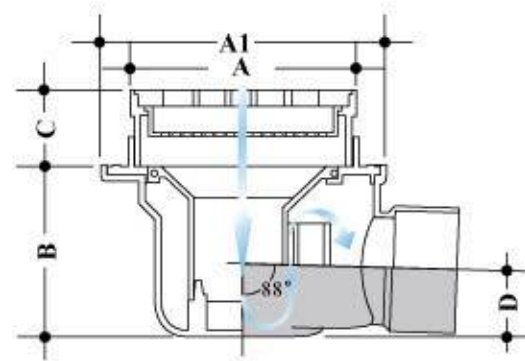
Model No.	Nom. Size (mm)	Grating Size (mm)	Chrome plated brass frame & grating	Drain slot	A (mm)	A1 (mm)	B (mm)	C (mm)	D (mm)
LG 481B-WR	50	104	*		114	144	127	32	68
LG 481HB-WR	50	104	*		114	144	127	33-63	68
LG 481HB-SD-WR	50	104	*	*	114	144	127	33-63	68

^ 1 plug is provided for customer to determine either left or right water seal replenishment inlet

## Legend



LG 451HS



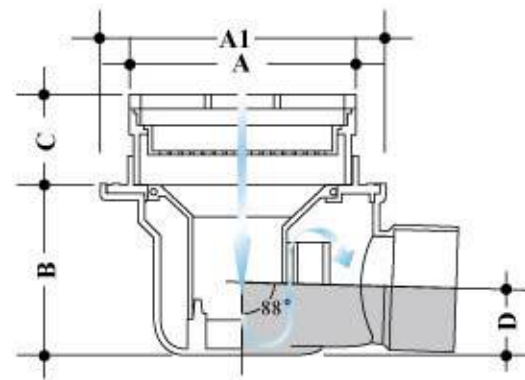
### Top Access 50mm Seal Resealing Gully

頂掀式50毫米水封防虹吸去水斗

Model No.	Nom. Size (mm)	Grating Size (mm)	White ABS grating	Chrome plated ABS grating	Stainless steel grating	Drain slot	A (mm)	A1 Ø(mm)	B (mm)	C (mm)	D (mm)
LG 451	50	109×109	*				114	144	90	27	30
LG 451H	50	109×109	*				114	144	90	28-58	30
LG 451H-SD	50	109×109	*			*	114	144	90	28-58	30
LG 451C	50	109×109		*			114	144	90	27	30
LG 451HC	50	109×109		*			114	144	90	28-58	30
LG 451HC-SD	50	109×109		*		*	114	144	90	28-58	30
LG 451S	50	114×114			*		114	144	90	29	30
LG 451HS	50	114×114			*		114	144	90	30-60	30
LG 451HS-SD	50	114×114			*	*	114	144	90	30-60	30



LG 451HB-SD



### Top Access 50mm Seal Resealing Gully

頂掀式50毫米水封防虹吸去水斗

Model No.	Nom. Size (mm)	Grating Size Ø(mm)	Chrome plated brass frame & grating	Drain slot	A (mm)	A1 Ø (mm)	B (mm)	C (mm)	D (mm)
LG 451B	50	104	*		114	144	90	32	30
LG 451HB	50	104	*		114	144	90	33-63	30
LG 451HB-SD	50	104	*	*	114	144	90	33-63	30

## Legend

### Nylon Pipe Clips (for Plain / Plastic Coated Copper Tubes with/ without Thermal Insulation Wrapping)

尼龍喉碼(銅管/包膠銅管/包保溫棉銅管適用)

Exposed copper tubes are commonly used in the drainage system for easy maintenance and repair. The copper tubes are wrapped with sorts of plastic padding in preventing water condensation. However, those traditional stainless steel or brass clips to anchoring the copper tube are lack of installation flexibility and the appearances are not considered to be acceptable. Such clips will make inefficient the working process and further increase the installation costs.

In view of this, **Legend** invented a series of Nylon Pipe Clips for copper tubes which make use of relatively tenacious, wearable and corrosion resisting plastic material- Nylon, enhanced by fire retardant additives for higher fire protection. The two-tiered design of such Nylon Pipe Clips is contoured to fit the wrapping with the copper tube that makes installation with ease and stable anchorage, as well as neat appearance.

**Legend's** Nylon Pipe Clips are fit for wrapping with thickness of 9mm, 13mm, 19mm and 25mm and copper tubes of 22mm-54mm.

在現代供水系統中，為方便日後的維修工作，大部份業界均會採用外露銅管之設計。為了防止銅管與空氣接觸因溫差而導致滴水，保溫棉是會慣常被採用的。對於承托帶有保溫棉的銅管，傳統的不銹鋼喉碼或銅喉碼無論在安裝的工序上、效果上及外觀上都存有難於解決的問題，以致增加安裝成本及得不到理想效果。

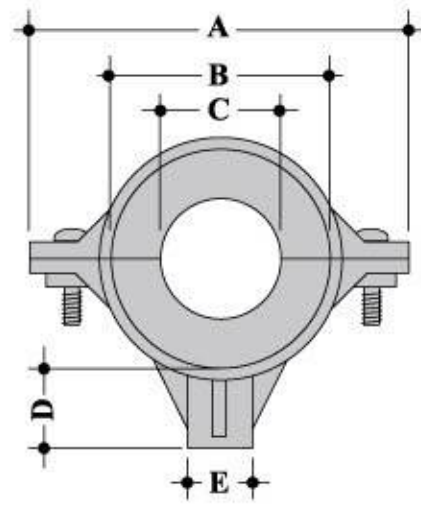
為此，**Legend**充份發揮其專業本能，研發出一系列的保溫棉銅喉碼，採用比較堅韌、耐磨性和抗腐蝕性極強的尼龍塑料，加入耐熱及阻燃物料，配合全新的內外兩層設計，簡化了安裝的工序，並取得良好的外觀及穩當的承托效果。

**Legend**保溫棉尼龍銅喉碼適用於9mm、13mm、19mm及25mm厚度的保溫棉，銅管規格則由22mm至54mm。

## Legend



LK 2809



### Nylon Pipe Clip - For Copper Tube with Thermal Insulation

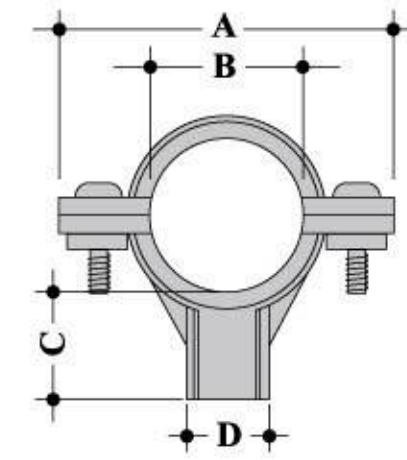
尼龍管卡 - 包保溫棉銅管適用

Model No.	Nom. Size (mm)	Insulation Thickness (mm)	A (mm)	B Ø(mm)	C Ø(mm)	D (mm)	E Ø(mm)
LK 2209	22	9	78	40	22	21	15
LK 2809	28	9	84	46	28	21	15
LK 3509	35	9	91	53	35	21	15
LK 4209	42	9	98	60	42	21	16
LK 5409	54	9	110	72	54	21	16
LK 2213	22	13	86	48	22	21	15
LK 2813	28	13	92	54	28	21	15
LK 3513	35	13	89	61	35	21	15
LK 4213	42	13	106	68	42	21	16
LK 5413	54	13	118	80	54	21	16
LK 2219	22	19	98	60	22	21	16
LK 2819	28	19	104	66	28	21	16
LK 3519	35	19	111	73	35	21	16
LK 4219	42	19	118	80	42	21	16
LK 2225	22	25	110	72	22	21	16
LK 2825	28	25	116	78	28	21	16
LK 3525	35	25	123	85	35	21	16

## Legend



LK 610



### Nylon Pipe Clip - For Copper Tube

尼龍管卡 - 銅管適用

Model No.	Nom. Size (mm)	For plain copper tube	For plastic coated copper tube	A (mm)	B Ø(mm)	C (mm)	D Ø(mm)
LK 706	22		*	60	25	21	16
LK 606	22	*		57	22	21	16
LK 610	28	*		63	28	21	16
LK 612	35	*		73	35	21	16
LK 615	42	*		80	42	21	16
LK 620	54	*		92	54	21	16

# Legend

## Trap's Water Seal Replenishment System<sup>®</sup>

### 聚水器水封補給系統

Focus to resolve the problem of bacteria disperse through the floor drains resulting from the traps' water seal drying out by the vaporization and siphonic actions, **Legend** offered a simple and reliable solution – Trap Water Seal Replenishment System, which has been widely using in a vast amount of projects since 2003.

It is essential to use a special designed Anti-siphon Trap / Resealing Gully and a Tee-off arrangement connected to the Ø32mm or below **Secondary By-Pass** waste pipe from the basin, the water seal of the trap / gully will be replenished to a reasonable level whenever the waste water is discharged out at the basin in the bathroom or kitchen. The design has been testified by academic institutes and professionals for the system's feasibility and reliability. The main advantage is that the whole system can be fully sealed with trap / gully's water seal by a little modification to the original pipeline design, which comply with the current International Standards and the local Building Regulations, as such advised in "PNAP277" by Building Department. The system has virtually no foam/ air generated and back flown actions into the bathroom or kitchen via the floor drains' outlets even under abnormal conditions such as exaggerated ventilation or blockage of waste pipes. On the other hand, the Trap Water Seal Replenishment System has been granted Patents and **Legend** reserve the right to take necessary actions for any invasion acts to the copyright in due course.

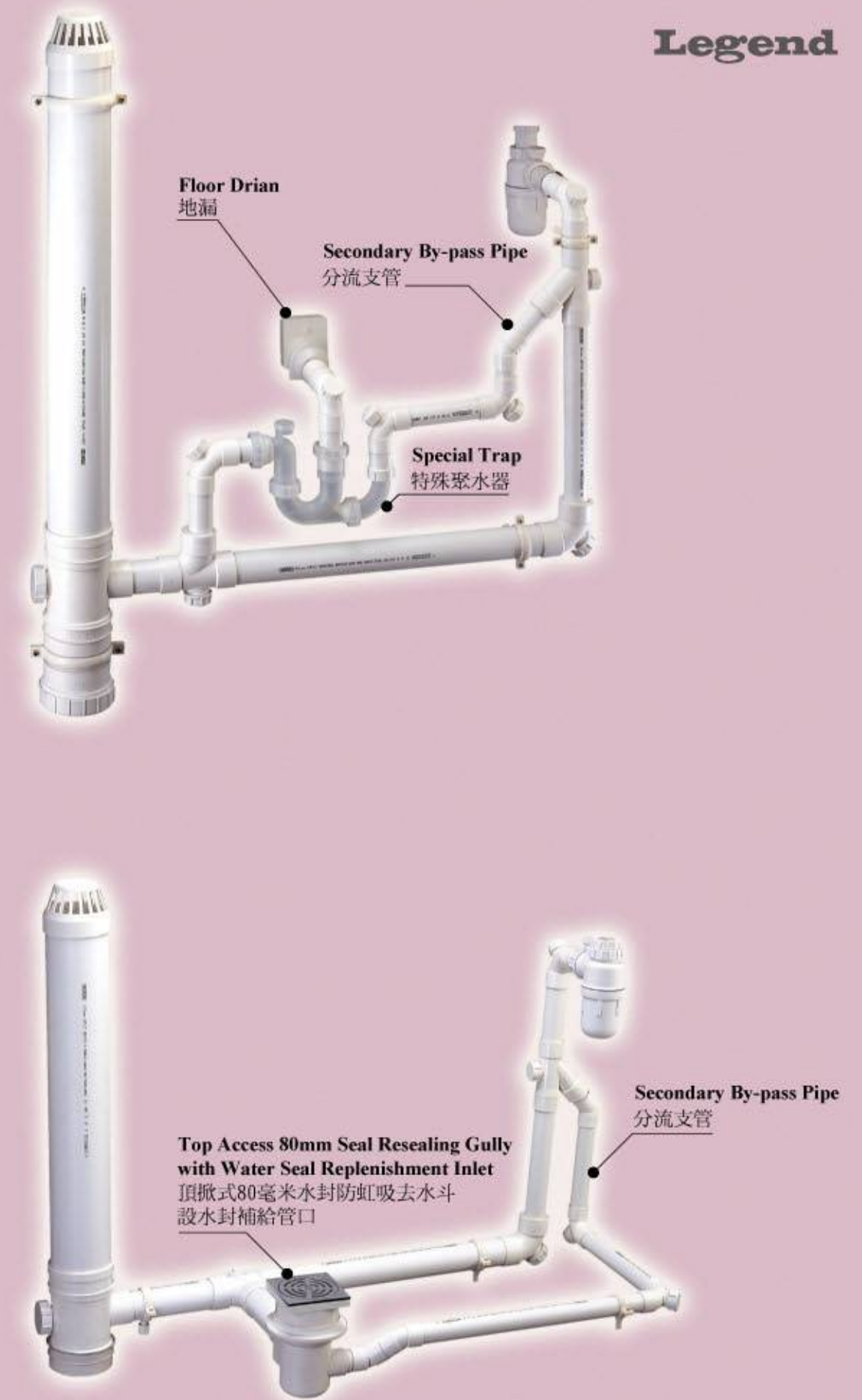
Even though the system has been proven to perform the designated function (Water Seal Replenishment) effectively and satisfactorily, **Legend** shall in all cases be limited to the replacement of the defective products (if applicable) supplied under the system by **Legend** only. In all circumstances, **Legend** shall not be liable to the end users or any third party for any losses and damages sustained by them arising out of or deriving directly or indirectly from the use of the system. End users shall be obliged to check the suitability of the system for the purpose of any particular situation and seek professional advices.

針對地漏出口會通過水封被蒸發乾涸的聚水器而傳播細菌，**Legend** 特意為這問題提供了一項簡單、可靠，並自2003年開始已被廣泛採用的解決方法 – 聚水器水封補給系統。

**Legend** 聚水器水封補給系統是由一個特殊防虹吸聚水器/去水斗配合分流管道的設計所組成，直徑32毫米或以下的分流支管根據設定的數值把浴室/廚房洗滌盆排水管與特殊防虹吸聚水器/去水斗連接，每當浴室/廚房洗滌盆排水時，部份水量會通過分流支管補充至水封被蒸發乾涸的聚水器/去水斗。這個系統設計已取得多個學術機構及專業人事之共識，而最重要之優點是整個系統完全封閉，對原有排水系統只有輕微更改，符合國際及本地建築規例，屋宇署亦已發出有關作業守則PNAP277。即使在抽風系統不良或過大的情況下，這個系統也不會造成泡沫通過地漏出口回流至浴室/廚房。此外，**Legend** 聚水器水封補給系統已獲發專利，**Legend** 保留在適當時候對任何侵權行為採取法律行動之權利。

雖然本系統已通過嚴格測試，證明能有效及滿意地發揮其聚水器水封補充功能，但是在任何情況下，本公司將不會承擔應用本系統而引致所有直接或間接損失的責任賠償。用家務請自行確認本系統在某種環境下之適用性。

# Legend



## Legend

### Installation Guide / 安裝指引

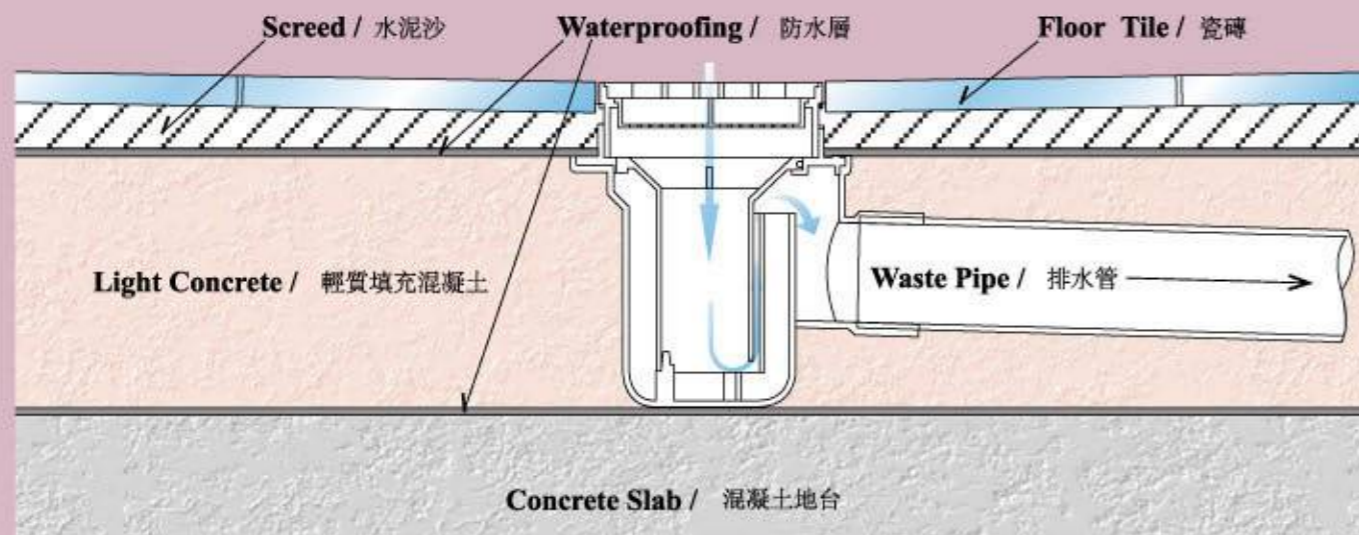
#### Top Access 80mm Seal Resealing Gully

1. Situate and secure the gully body on top of the basic waterproofing surface of concrete slab.
2. Solvent weld the waste pipe to the gully body and protect the gully's opening with a cover prior to the pouring of light concrete into the concrete slab.
3. Fix the additional waterproofing and it shall flush with the gully's flange.
4. Remove the protective cover and adjust the hopper's height by cutting the clamping unit to a pre-determined level and direction. Then, solvent weld the unit onto the hopper body.
5. Construct the screed with an appropriate thickness.
6. Properly lay the floor tiles.
7. Install the resealing tube, strainer and the grating one by one into the hopper body.



#### 頂掀式80毫米水封防虹吸去水斗

1. 在完成防水層的混凝土台面上按適當高度安裝去水斗主體。
2. 接駁排水管，裝上保護蓋後才可灌澆輕質填充混凝土。
3. 完成第二防水層，防水層必須與去水斗主體防水凹線完全吻合。
4. 取離保護蓋，根據地台瓷磚面高度數值切割去水斗加高件，並按所需方向角度用膠水接駁至去水斗主體。
5. 做好水泥沙地台面。
6. 鋪設地台面瓷磚或雲石等物料。
7. 按步驟把內件包括水封管、過濾隔及漏格面裝上。



## Legend

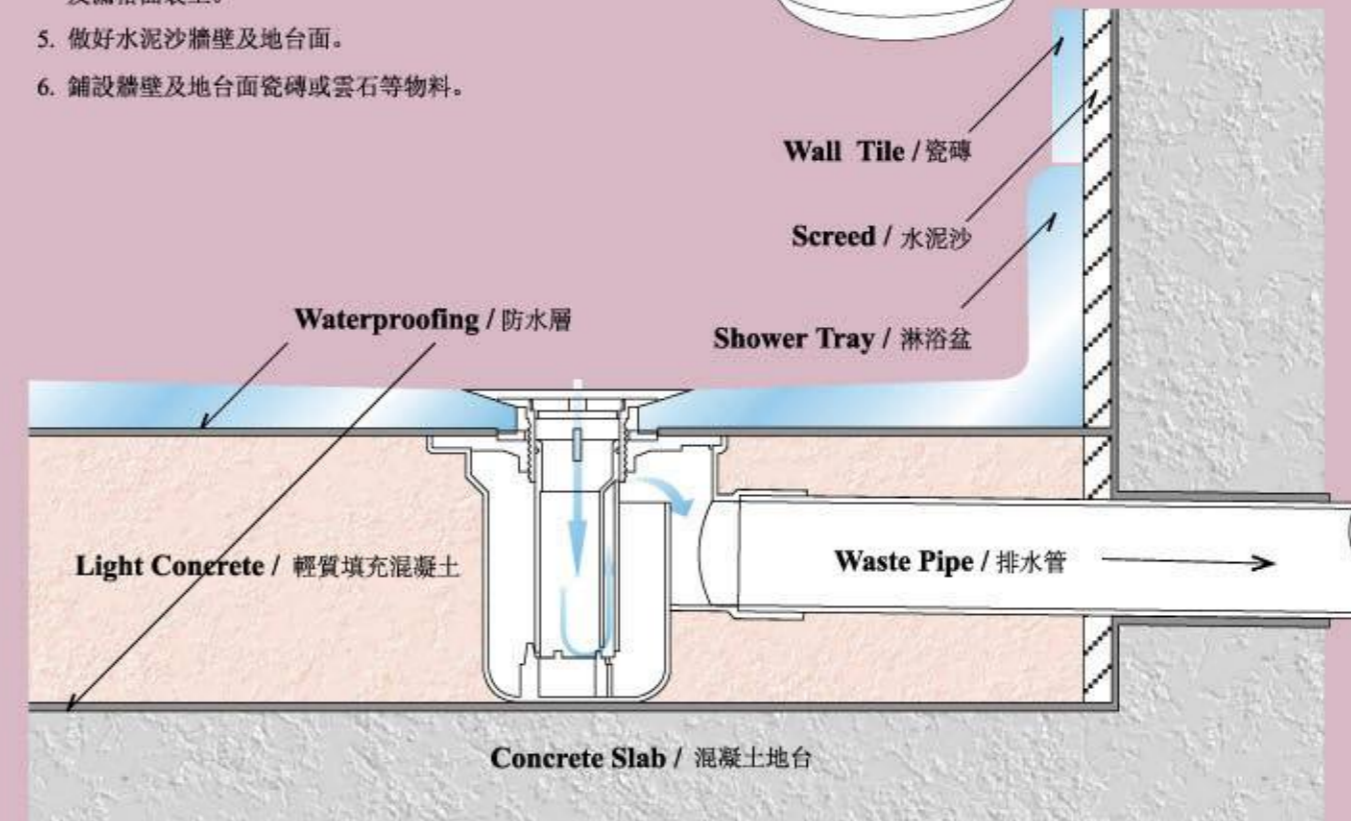
#### Top Access 80mm Seal Resealing Gully

1. Situate and secure the gully body on top of the basic waterproofing surface of concrete slab.
2. Solvent weld the waste pipe to the gully body prior to the pouring of light concrete into the concrete slab.
3. Fix the additional waterproofing if necessary and put the shower tray in place with the gasket situated underneath.
4. Swivel the Waste fitting down so as to secure the tray firmly and then install the resealing tube and the grating accordingly.
5. Construct the screed with an appropriate thickness.
6. Properly lay the floor/wall tiles.



#### 頂掀式80毫米水封防虹吸去水斗

1. 在完成防水層的混凝土台面上按適當高度及淋浴盆排水洞位置安裝去水斗主體。
2. 接駁排水管，灌澆輕質填充混凝土。
3. 完成第二防水層後安放橡膠圈並裝上淋浴盆。
4. 在淋浴盆排水孔接駁排水配件後按步驟把內件包括水封管及漏格面裝上。
5. 做好水泥沙牆壁及地台面。
6. 鋪設牆壁及地台面瓷磚或雲石等物料。



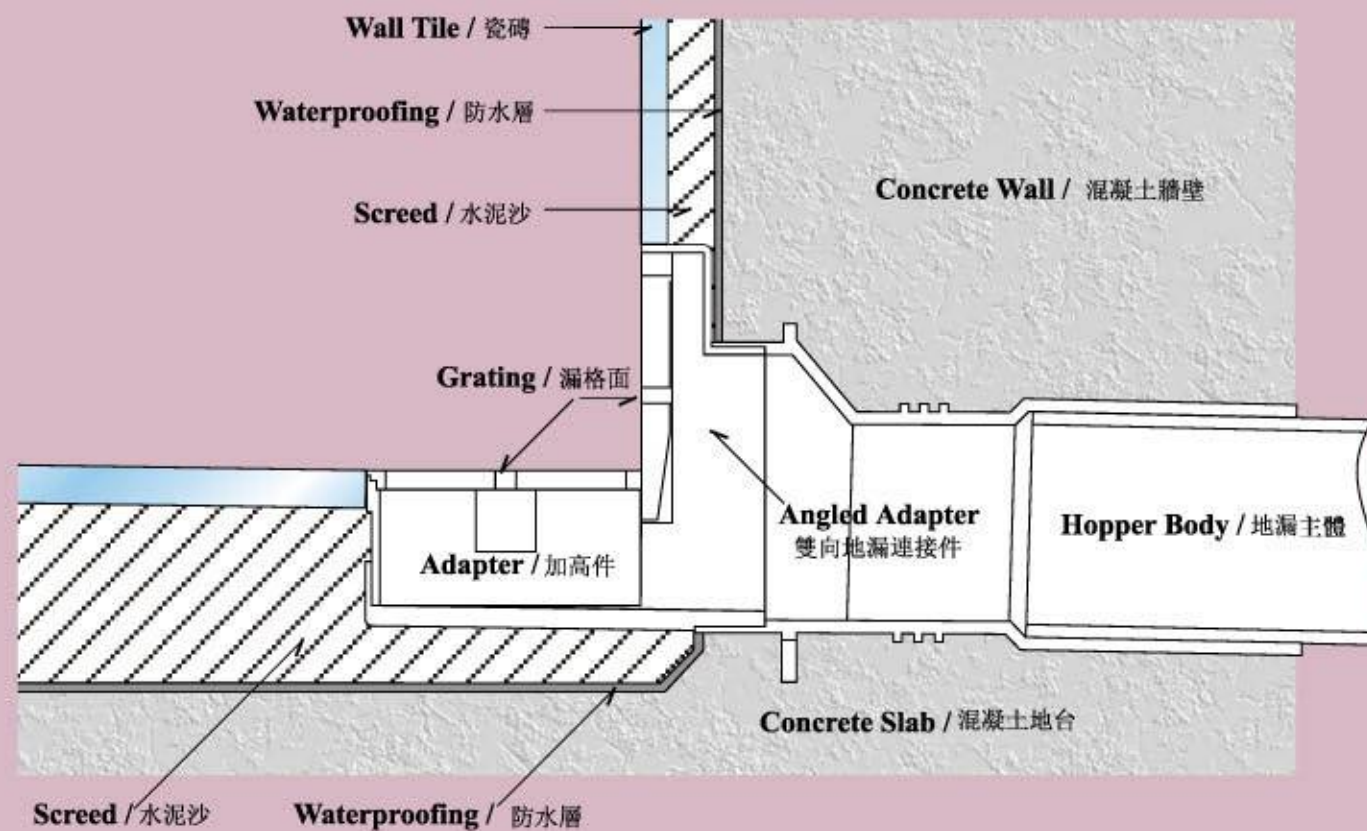
## Installation Guide / 安裝指引

### PVC-u Two-Ways Floor Drains

1. Pre-cast the rear hopper body into the wall with a proper fall angle and protect it by suitable covering materials.
2. Install the angled adapter frame.
3. Adjust the vertical height by cutting adapter to the designated floor level and then solvent weld it to the frame accordingly.
4. Fix the waterproofing.
5. Construct the screed with an appropriate thickness.
6. Properly lay the floor/wall tiles.
7. Install the vertical/horizontal gratings by the screws provided.

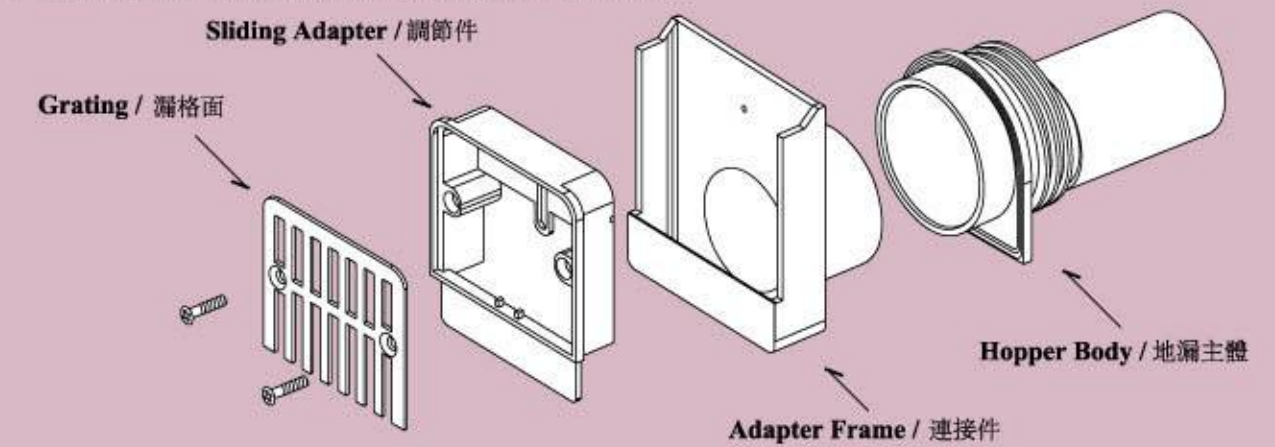
#### 雙向排水地漏

1. 在灌澆混凝土牆壁前按適當高度及角度穩固安裝地漏主體，並作適當保護。
2. 拆模板後按照牆壁瓷磚面厚度數值安裝雙向地漏連接件，用膠水接駁至地漏主體。
3. 根據地台瓷磚面高度數值切割地漏加高件，用膠水接駁至雙向地漏連接件。
4. 做好防水層。
5. 做好水泥沙牆壁及地台面。
6. 鋪設牆壁及地台面瓷磚或雲石等物料。
7. 安裝漏格面。



### PVC-u Adjustable Vertical Grating Floor Drains

1. Pre-cast the rear hopper body into the wall with a proper fall angle and protect it by suitable covering materials.
2. Adjust the horizontal displacement by moving the socket frame to-and-fro to the designated wall thickness after dismantling the pre-cast frame work. Then solvent weld the adapter frame to the hopper.
3. Adjust the vertical displacement by moving the sliding adaptor up-and-down to the designated floor thickness and secure it by the fixing nut.
4. Fix the waterproofing.
5. Construct the screed with an appropriate thickness.
6. Properly lay the floor/wall tiles.
7. Install the gloss stainless steel grating by the screws.



#### 可調節垂直漏格面地漏

1. 在灌澆混凝土牆壁前按適當高度及角度穩固安裝地漏主體，並作適當保護。
2. 拆模板後按照牆壁瓷磚面厚度數值安裝地漏連接件，用膠水接駁至地漏主體。
3. 根據地台瓷磚面高度數值安裝地漏調節件，以中心螺絲固定。
4. 做好防水層。
5. 做好水泥沙牆壁及地台面。
6. 鋪設牆壁及地台面瓷磚或雲石等物料。
7. 安裝漏格面。



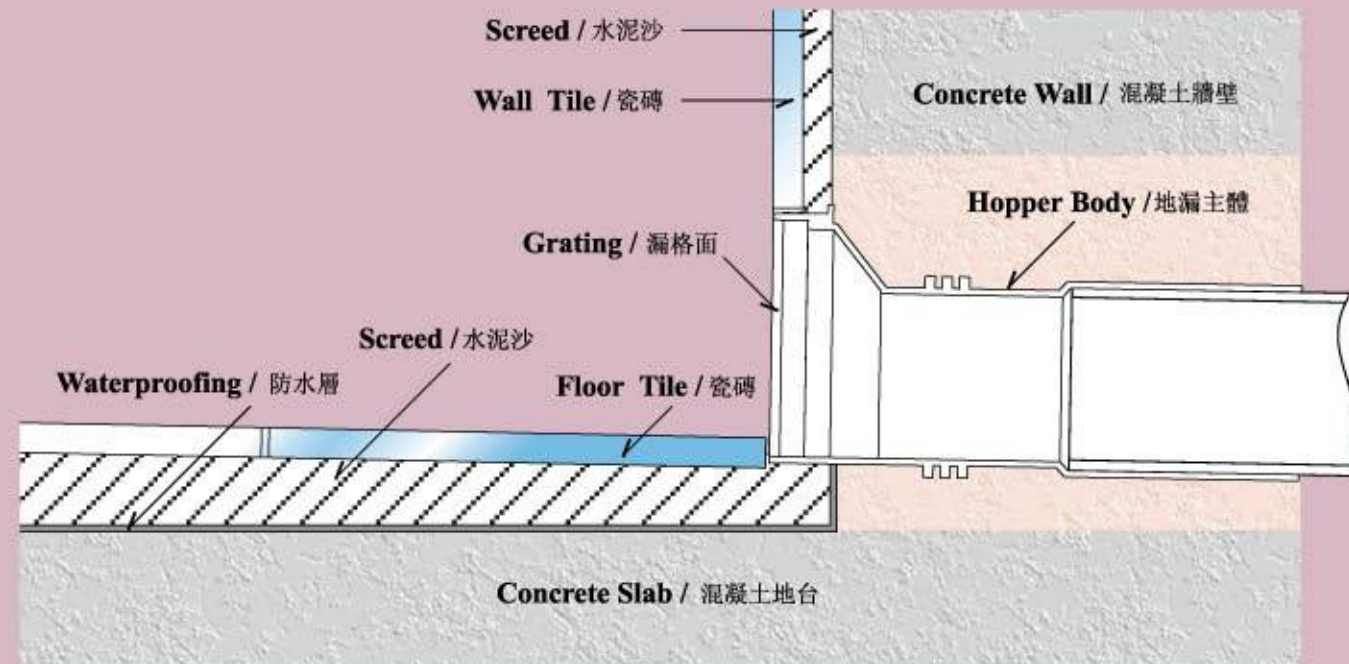
## Installation Guide / 安裝指引

### PVC-u Vertical Grating Floor Drains

1. Leave a hole by pipe sleeve or other means prior to the fabrication of wall structure.
2. Situate the floor drain with hopper body at a proper water fall angle to the given reference levels. Then, backfill the hole by concrete.
3. Fix the waterproofing.
4. Construct the screed with an appropriate thickness.
5. Properly lay the floor/wall tiles.
6. Install the grating by the screws provided.

#### 垂直漏格面地漏

1. 在灌澆混凝土牆壁前預留適當洞口。
2. 按適當高度及角度安裝地漏主體，灌澆混凝土填塞牆壁洞口。
3. 做好防水層。
4. 做好水泥沙牆壁及地台面。
5. 鋪設牆壁及地台面瓷磚或雲石等物料。
6. 安裝漏格面。

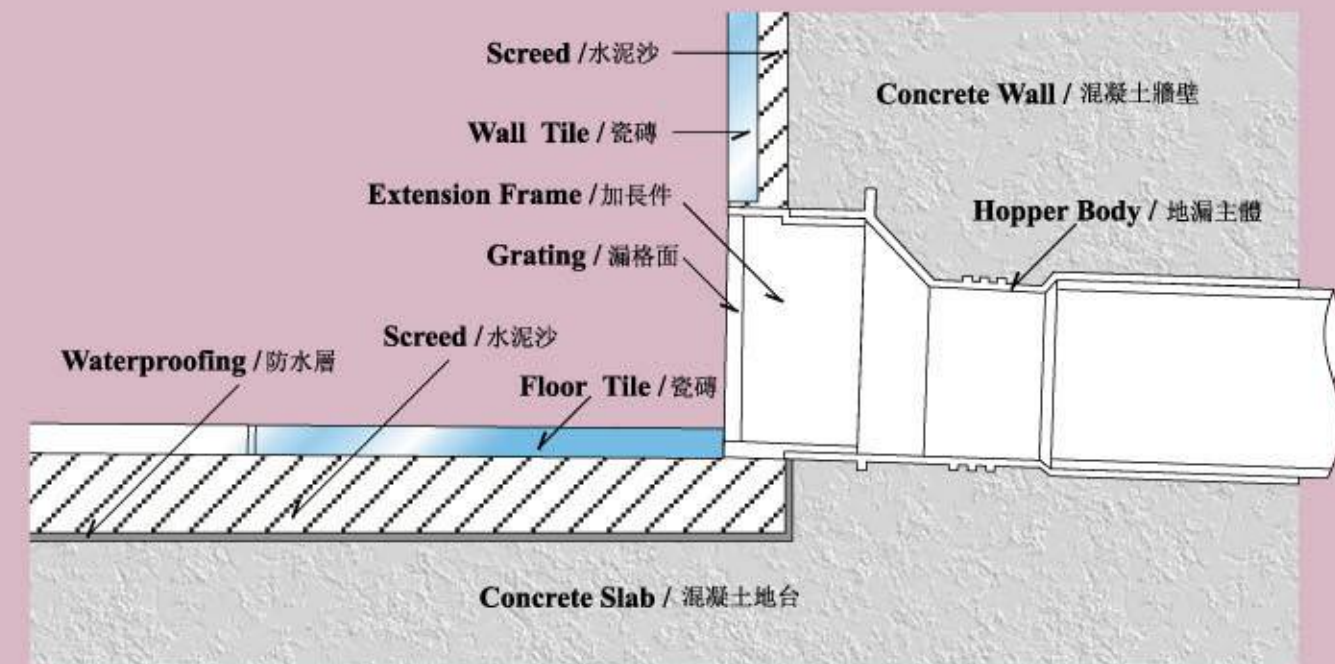


### PVC-u Vertical Grating Floor Drains with Extension Frame

1. Pre-cast the rear hopper body into the wall with a proper water fall angle and cover the hopper by suitable protective materials.
2. Situate the extension frame to the given reference levels after the demolition of wooden or metal plates.
3. Fix the waterproofing.
4. Construct the screed with an appropriate thickness.
5. Properly lay the floor/wall tiles.
6. Install the grating by the screws provided.

#### 配加長件垂直漏格面地漏

1. 在灌澆混凝土牆壁前按適當高度及角度穩固安裝地漏主體，並作適當保護。
2. 拆模板後安裝地漏加長件，用膠水接駁至地漏主體。
3. 做好防水層。
4. 做好水泥沙牆壁及地台面。
5. 鋪設牆壁及地台面瓷磚或雲石等物料。
6. 安裝漏格面。





## Legend

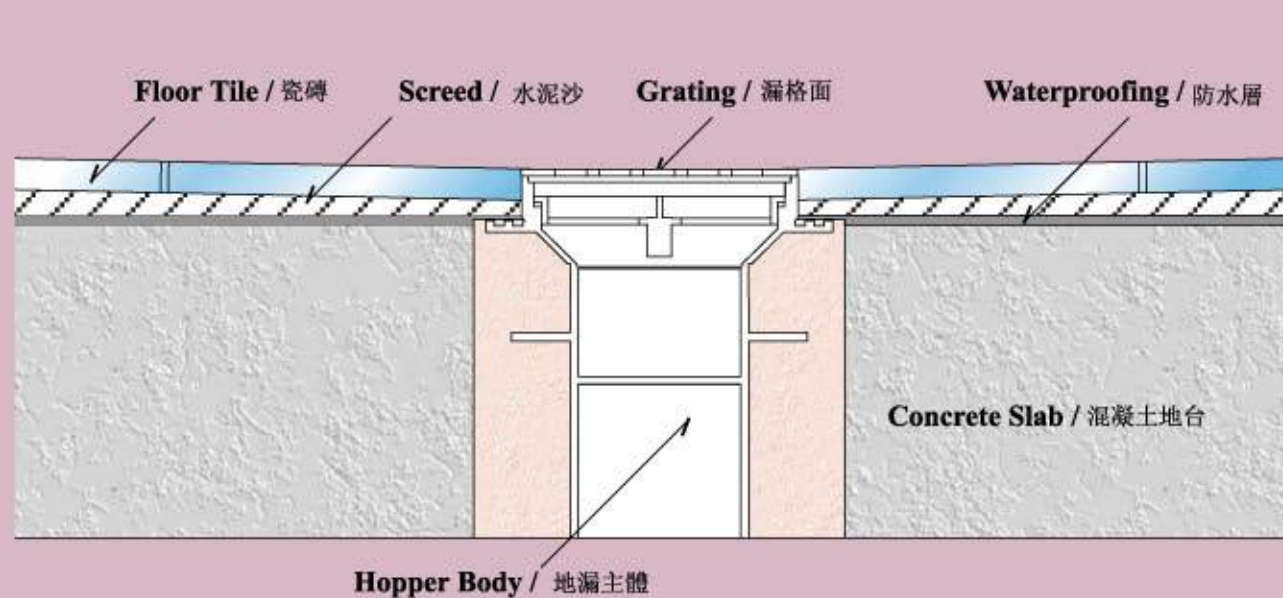
### Installation Guide / 安裝指引

#### PVC-u Horizontal Grating Floor Drains

1. Leave a hole by pipe sleeve or other means prior to the fabrication of floor structure.
2. Situate the horizontal floor drain with hopper body at a proper horizontal level. Then, backfill the hole with concrete.
3. Fix the waterproofing and it shall flush with the hopper's flange.
4. Construct the screed to an appropriate thickness.
5. Properly lay the floor tiles.
6. Install the grating by the screws provided.

#### 水平漏格面地漏

1. 在澆灌混凝土地台前預留適當洞口。
2. 按適當高度及角度安裝地漏主體，澆灌混凝土填塞地台洞口。
3. 做好防水層，而防水層必須與地漏主體防水凹線完全吻合。
4. 做好水泥沙地台面。
5. 鋪設地台面瓷磚或雲石等物料。
6. 安裝漏格面。



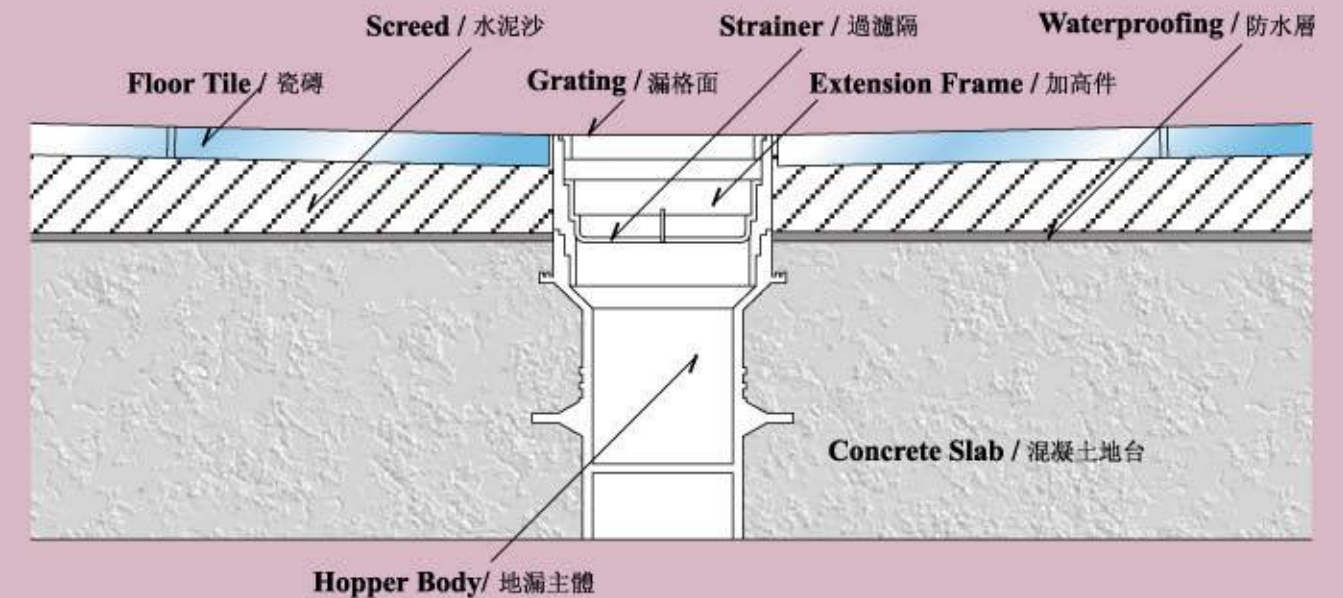
## Legend

#### PVC-u Horizontal Grating Floor Drains with Extension Frame

1. Situate the horizontal hopper body onto the formwork and protect the hopper by suitable covering materials.
2. Pouring the concrete into the formwork.
3. Fix the waterproofing and it shall flush with the hopper's flange.
4. Remove the protective cover. Adjust the extension frame to the designated reference floor level and solvent weld it to the hopper body.
5. Construct the screed to an appropriate thickness.
6. Properly lay the floor tiles.
7. Install the strainer and grating by the screws provided.

#### 配加高件水平漏格面地漏

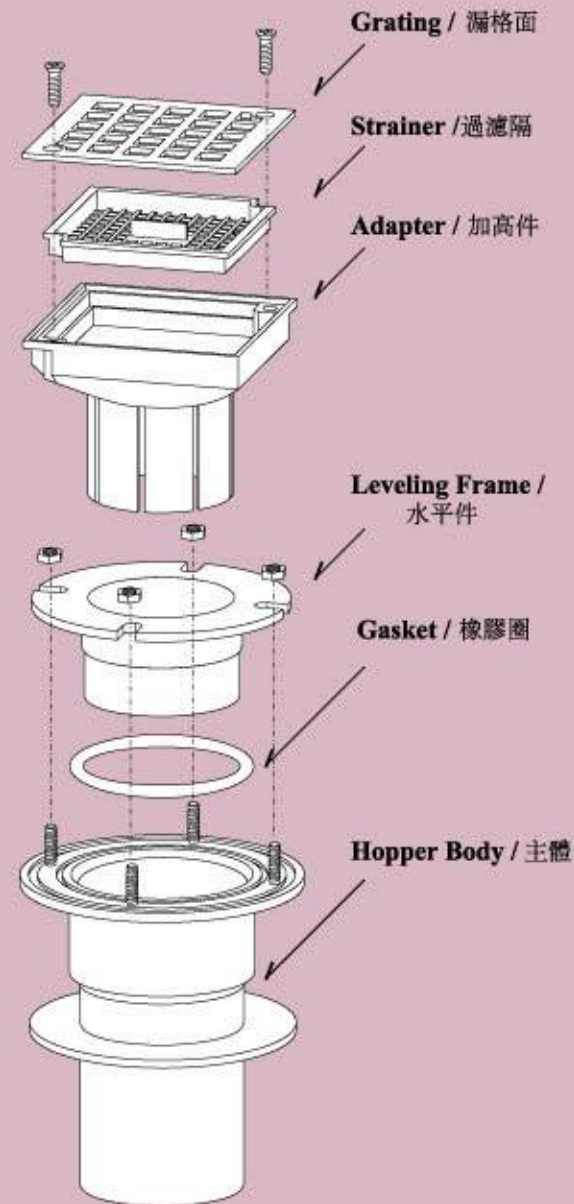
1. 在混凝土地台模板上安裝地漏主體。
2. 裝上保護蓋後澆灌混凝土。
3. 在混凝土地台面做防水層，而防水層必須與地漏主體防水凹線完全吻合。
4. 取離保護蓋，根據地台瓷磚面數值安裝地漏加高件，用膠水接駁至地漏主體。
5. 做好水泥沙地台面。
6. 鋪設地台面瓷磚或雲石等物料。
7. 按步驟把內件包括過濾隔及漏格面裝上。



## Installation Guide / 安裝指引

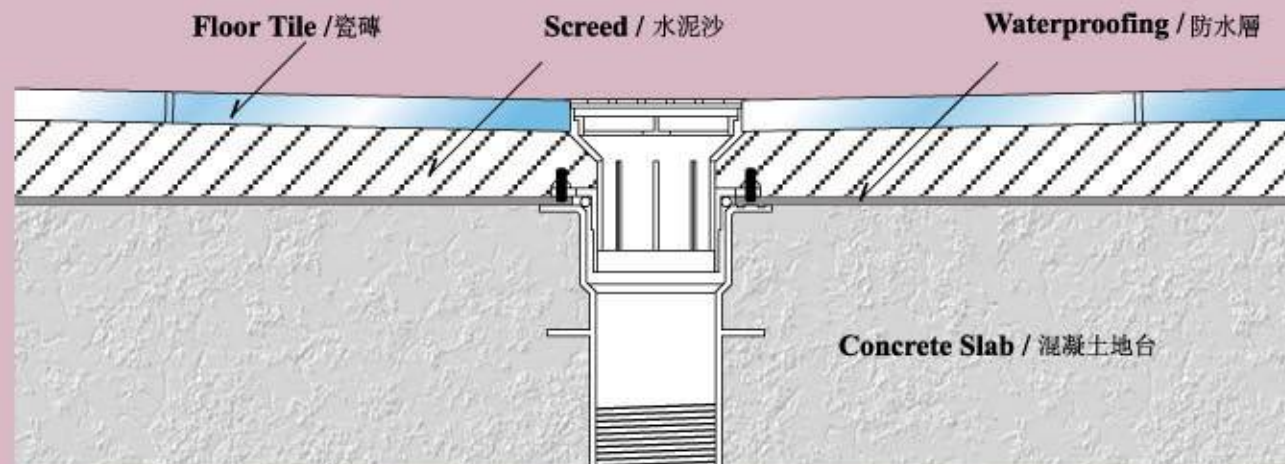
### Brass-made Hopper Horizontal Grating Floor Drains with Variable Leveling Device

1. Situate and secure the brass hopper body on the surface of formwork.
2. Protect the hole with a cover prior to the pouring of concrete into the formwork.
3. Fix the waterproofing and it shall flush with the body's flange.
4. Remove the protective cover and put the rubber gasket in place.
5. Adjust the leveling frame and the overall height by moving the adapter with drain slots up-and-down to a proper horizontal level and direction. Then secure it with the brass bolt and nuts provided.
6. Construct the screed with an appropriate thickness.
7. Properly lay the floor tiles.
8. Install the strainer and the grating one by one into the adaptor.



#### 可調節水平漏格面地漏 (銅製地漏主體)

1. 在混凝土地面模板上安裝銅製地漏主體。
2. 裝上保護蓋後澆灌混凝土。
3. 在混凝土地面做防水層，而防水層必須與地漏主體防水凹線完全吻合。
4. 取離保護蓋，配合橡膠圈安裝地漏水平件，並調節至適當水平角度。
5. 根據地台瓷磚面高度數值及方向角度用膠水安裝地漏加高件接駁至地漏水平件。
6. 做好水泥沙地台面。
7. 鋪設地台面瓷磚或雲石等物料。
8. 按步驟把內件包括過濾隔及漏格面裝上。

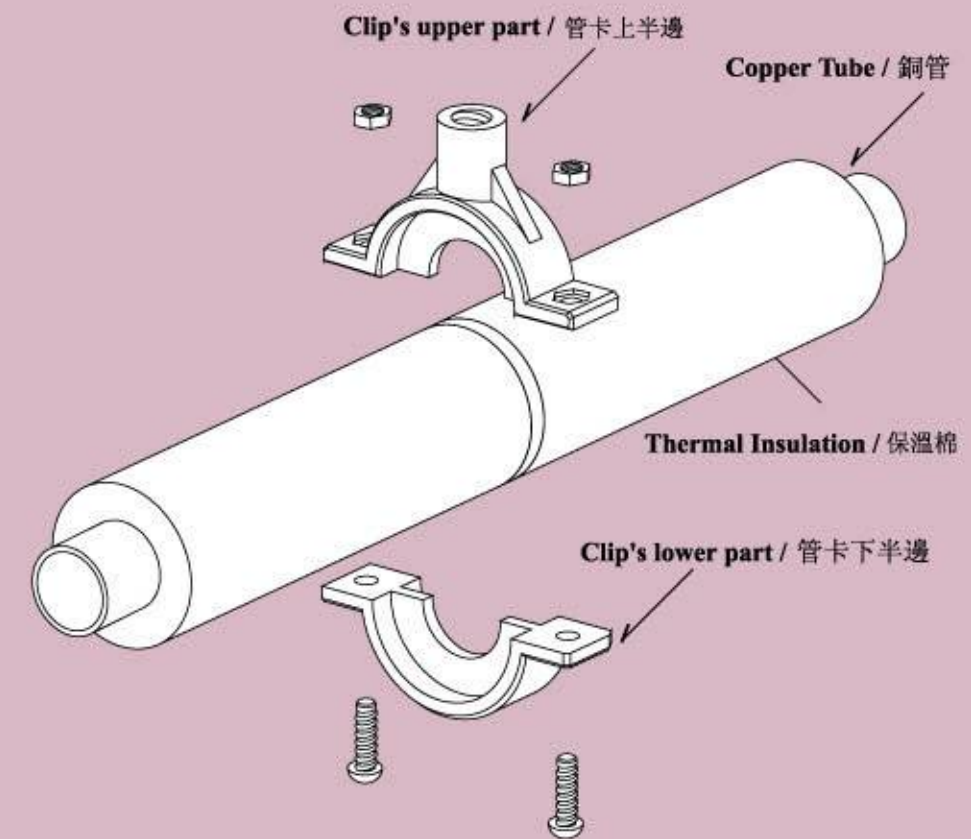


### Nylon Pipe Clips for Copper Tubes with Thermal Insulation Wrapping

1. Mark the proper location for the clips and drill a hole on the wall/ceiling.
2. Thoughtfully clean the debuts or dusts inside the drilled hole.
3. Situate a  $\varnothing 3/8$ " anchor bolt for short displacement criteria or a  $\varnothing 3/8$ " threaded hanger bar for the longer one.
4. Connect the clip's upper part with the threaded end of the bolt or hanger bar over the wall/ceiling.
5. Install the appropriate copper tube and insert the pre-cut Thermal Insulation Wrapping with ends flushed with the recess of clip. Then, secure the lower part of clip with the copper tubes and the insulation by means of Brass bolts & nuts provided.

#### 包保溫棉銅管用尼龍管卡

1. 在牆壁或樓底天花鑽孔。
2. 清理孔口內殘餘的混凝土粉末。
3. 安裝直徑 3/8" 爆炸螺絲(近離牆距)或 3/8" 螺紋吊桿(遠離牆距或吊裝樓底天花)。
4. 安裝包保溫棉銅管用尼龍管卡上半邊。
5. 安裝包保溫棉銅管，連接尼龍管卡下半邊，但必須在管卡位置的保溫棉上開一切口。



## Legend

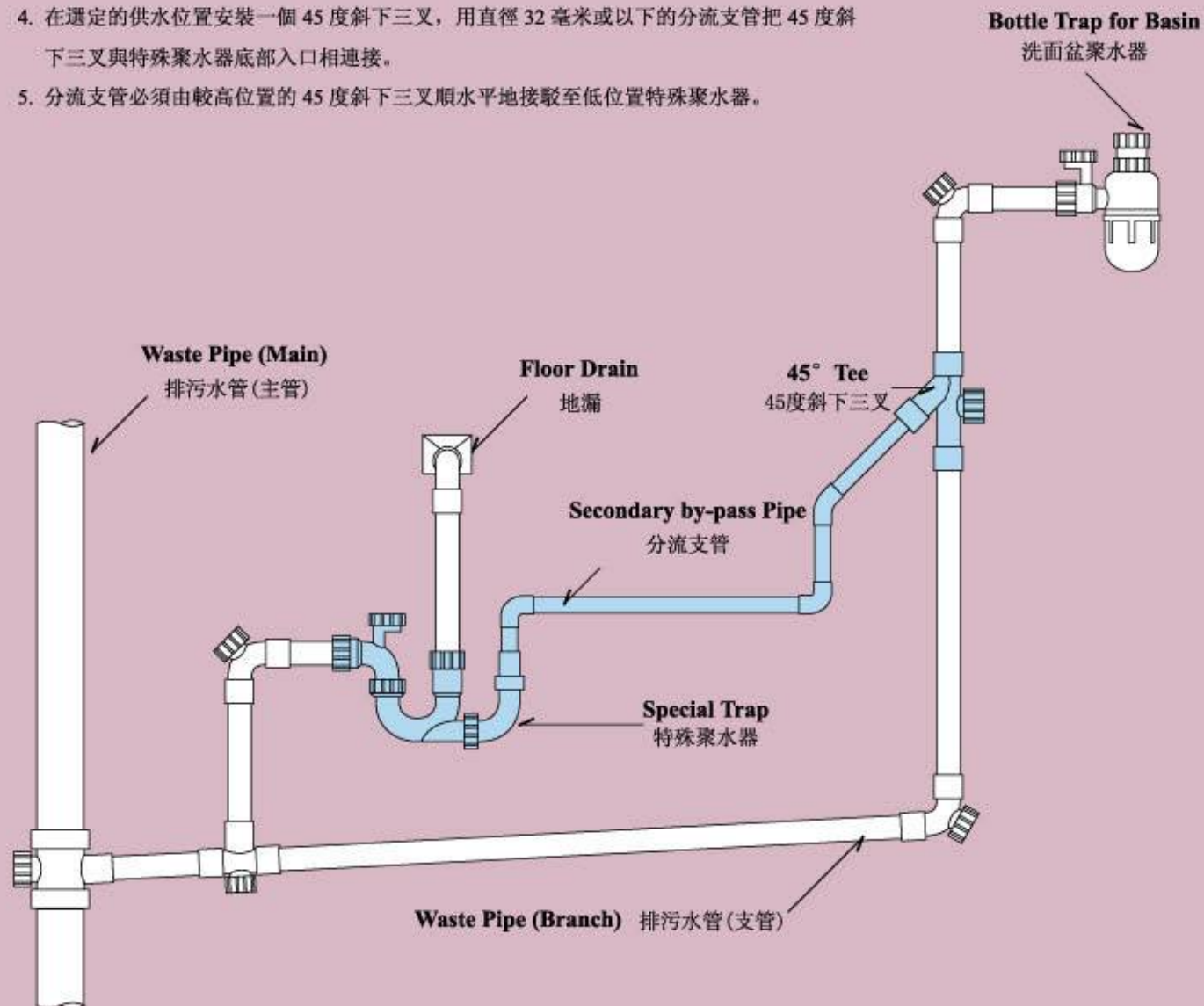
### Installation Guide / 安裝指引

#### Trap's Water Seal Replenishment System®

1. All the installation criteria must comply with the current Building Regulations and Ordinances.
2. Make use of **Legend** special anti-siphon traps for connecting the typical vertical grating floor drains at the bathroom and kitchen respectively.
3. Choose the origin of water supply for the system in a priority of washbasin, bathtub or shower tray.
4. Locate the point of the tee-off arrangement with a 45° tee junction and connect the secondary by-pass pipe, preferable pipe size of Ø 32 mm or below, to the lower inlet of the trap.
5. The secondary by-pass pipe must be connected horizontally from the higher position of 45° tee junction to the special trap.

#### 聚水器水封補給系統

1. 根據屋宇處建築物條例及浴室潔具的排列先設定一組完全符合建築條例的排水管道系統。
2. 選用 **Legend** 設計的特殊聚水器作為廚房及浴室地面排水聚水器。
3. 在原本預設的排水系統內選擇供水位置包括洗面盆、浴盆或淋浴盆排水管。
4. 在選定的供水位置安裝一個 45 度斜下三叉，用直徑 32 毫米或以下的分流支管把 45 度斜下三叉與特殊聚水器底部入口相連接。
5. 分流支管必須由較高位置的 45 度斜下三叉順水平地接駁至最低位置特殊聚水器。



## Legend

### Job Reference / 工程實例

#### Legend - Water Seal Replenishment Top Access Gully / Tubular P-Trap



**Opus Hong Kong 傲璇**  
53 Stubbs Road, The Peak  
Developer: Swire Properties  
Consultant: Parsons Brinckerhoff (Asia) Ltd.  
B.S. Contractor: ATAL Engineering Co., Ltd.



**Azura 蔚然**  
2A Seymour Road, Mid-Levels West  
Developer: Swire Properties  
Consultant: J. Roger Preston Ltd.  
B.S. Contractor: Wong Po Kee Ltd.



**Twelve Peaks 12 加列山道12號**  
12 Mount Kellett Road, The Peak  
Developer: Sun Hung Kai Properties  
Consultant: Sun Hung Kai Architects & Engineering Ltd.  
B.S. Contractor: Wing Fat Plumbing Ltd.



**The Signature 春暉8號**  
8 Chun Fai Terrace, Tai Hang  
Developer: New World Development & Peterson Group  
Consultant: Majestic Engineering Co., Ltd.  
B.S. Contractor: Majestic Engineering Co., Ltd.



**The Reach 尚悅**  
11 Shap Pat Heung Road, Yuen Long  
Developer: Henderson Land & New World Development  
Consultant: Meinhardt (M&E) Ltd.  
B.S. Contractor: Majestic Engineering Co., Ltd.



**The Warren 瑋華**  
9 Warren Street, Tai Hang  
Developer: Wing Tai  
Consultant: P & T Architects & Engineers Ltd.  
B.S. Contractor: Wing Fat Plumbing Ltd.



**Lions Rise 現崇山**  
8 Muk Lun Street, Wong Tai Sin  
Developer: Kerry Properties  
Consultant: WSP  
B.S. Contractor: Yuen Cheong Engineering Co., Ltd.



**The River Park 漆岸8號**  
8 Che Kung Mui Road, Sha Tin  
Developer: New World Development & MTR  
Consultant: Parsons Brinckerhoff (Asia) Ltd.  
B.S. Contractor: Majestic Engineering Co., Ltd.



**Providence Bay 天賦海灣**  
TPTL187 Pak Shek Kwok, Tai Po  
Developer: Sino Land, Nan Fung, K. Wah & Wing Tai  
Consultant: P & T Architects & Engineers Ltd.  
B.S. Contractor: Ridgid Plumbing Ltd.



**Phase 3, Festival City 盛世(名城3期)**  
1 Mei Tin Road, Tai Wai  
Developer: Cheung Kong  
Consultant: Parsons Brinckerhoff (Asia) Ltd.  
B.S. Contractor: Yuen Cheong Engineering Co., Ltd.



**18 Upper East 港島·東18**  
18 Shing On Street, Shau Kei Wan  
Developer: Emperor Investment  
Consultant: Hyder Consultant Ltd.  
B.S. Contractor: Wong Kwong Kee Engineering Co., Ltd.



**Kadoorie Hill**  
211 Prince Edward Road West  
Developer: Wheelock Properties  
Consultant: Kinetics Consultants Ltd.  
B.S. Contractor: Golden Day Engineering Co., Ltd.



# Legend

Sole Distributor:  
Kembla (HK) Limited

Office:  
5/F Henan Building  
90 Jaffe Road, Wan Chai, Hong Kong  
Tel: +852 2528 0999  
Fax: +852 2528 3113  
E-mail: [info@kembla.com.hk](mailto:info@kembla.com.hk)  
Website: [www.kembla.com.hk](http://www.kembla.com.hk)